

### **3. Darlington: The People**

#### **3.1 Darlington population structure**

Good estimates of the resident population are vital to facilitate planning of health and social care services at local level and provide denominators for epidemiological analyses. Showing proportions of the population in each age group allows comparisons to be drawn, for example, about the relative impact that the size of young people may have upon health and care services. Tables 3.1a -3.1b below describe the population of Darlington by the proportions of male and female populations in each age group. The population of Darlington by age at ward level is provided in Appendix 1.

The future population of Darlington is expected to remain fairly stable and on the whole the population profile closely resembles the national profile. However, there is a smaller proportion of young adults in Darlington than in England overall. Long term projections show the working age population reducing over time while the population of retirement age is increasing. It is projected that by 2015 over 19% of the population will be aged 65 years or older.

**Table 3.1a\*\*:** Proportion of the resident male population by age group (mid 2008)

Local Authority (Upper Tier)	Total Male Resident Population 2008	Percentage Male 0-14 Resident Population 2008	Percentage Male 15-24 Resident Population 2008	Percentage Male 25-34 Resident Population 2008	Percentage Male 35-44 Resident Population 2008	Percentage Male 45-54 Resident Population 2008	Percentage Male 55-64 Resident Population 2008	Percentage Male 65-74 Resident Population 2008	Percentage Male 75+ Resident Population 2008
Darlington	48800	19%	13%	11%	14%	14%	13%	9%	6%
North East	1259600	17%	14%	12%	14%	14%	12%	9%	6%
England	25318800	18%	14%	13%	15%	13%	12%	8%	6%

Source: Office for National Statistics, 2009

**Table 3.1b\*\*:** Proportion of the resident female population by age group (mid 2008)

Local Authority (Upper Tier)	1.1 Total Female Resident Population 2008	Percentage Female 0-14 Resident Population 2008	Percentage Female 15-24 Resident Population 2008	Percentage Female 25-34 Resident Population 2008	Percentage Female 35-44 Resident Population 2008	Percentage Female 45-54 Resident Population 2008	Percentage Female 55-64 Resident Population 2008	Percentage Female 65-74 Resident Population 2008	Percentage Female 75+ Resident Population 2008
Darlington	51700	17%	12%	11%	14%	14%	12%	9%	10%
North East	1315900	16%	13%	11%	14%	14%	12%	9%	9%
England	26127500	17%	13%	13%	15%	13%	12%	9%	9%

Source: Office for National Statistics, 2009

### 3.2 Black and minority ethnic populations

Table 3.2 below shows the number of people usually resident in Darlington at the time of the 2001 Census who described themselves as White British and those who classified themselves as minority ethnic groups (Black, Asian, mixed race and other white non-British residents).

**Table 3.2: Number of people usually resident in Darlington at the time of the 2001 Census, the number who were classified as White British and the number classified in a different way.**

Area	All people	White British people		All others	
	Number	Number	Percentage	Number	Percentage
Bank Top	3754	3606	96%	148	4%
Central	3613	3399	94%	214	6%
Cockerton East	5081	4984	98%	97	2%
Cockerton West	4181	4123	99%	58	1%
College	3730	3609	97%	121	3%
Eastbourne	5089	4936	97%	153	3%
Faverdale	1513	1480	98%	33	2%
Harrowgate Hill	5895	5741	97%	154	3%
Haughton East	4130	4028	98%	102	2%
Haughton North	3467	3370	97%	97	3%
Haughton West	5514	5349	97%	165	3%
Heighington and Coniscliffe	2953	2885	98%	68	2%
Hummersknott	3587	3452	96%	135	4%
Hurworth	3404	3336	98%	68	2%
Lascelles	3519	3421	97%	98	3%
Lingfield	3537	3415	97%	122	3%
Middleton St George	3821	3725	97%	96	3%
Mowden	3642	3531	97%	111	3%
North Road	6051	5881	97%	170	3%
Northgate	4422	3920	89%	502	11%
Park East	6064	5757	95%	307	5%
Park West	3504	3391	97%	113	3%
Pierremont	5534	5406	98%	128	2%
Sadberge and Whessoe	1837	1804	98%	33	2%
Darlington UA	98800	94300	95%	4500	5%
North East	2549700	2412400	95%	137300	5%
England	50465600	42752600	85%	7713000	15%

Source: Office for National Statistics, 2001

In Darlington people from Black and Minority Ethnic (BME) backgrounds make up 2.1% of the population, although this figure does not include the majority of Gypsies and Travellers who constitute the largest BME group. There is a significant community of people of Bangladeshi origin. Migration from the European countries of the newly expanded European Union is a recent phenomenon for which there is not yet definite data. Proxy indicators, for

example national insurance and doctors' registrations suggest this new demographic group numbered over 1000 people at the beginning of 2008.

Most Travellers based in Darlington live on recognised sites and are of Romany descent. Whilst there is no census information available to identify Traveler numbers, officers within Children's Services who support the welfare of Traveler children estimate that there are approximately 700 people in Darlington who could claim to have a Traveler or Gypsy background. This figure includes those who live in bricks and mortar as well as in caravans.

The Health Survey for England indicates that Black and Minority Ethnic (BME) groups are more likely to report ill-health and that ill-health among BME people starts at a younger age than in the White British population. Patterns of ill-health among BME communities are extremely diverse and vary between men and women and between regions. Patients from BME groups are more likely to report negative experiences with the health services. Older service users from a BME group accessing adult social care make up 0.99% and those going on to receive services is 0.86% of total.

### **3.3 Future populations**

Across England, the total population is projected to increase by over 10% over the next 25 years. This will have a significant impact upon health and social care services and how they are delivered.

Trend-based projections of population estimates, which reflect assumptions for future levels of births, deaths and migration, are based on observed levels over the previous five years. They show what the population will be if recent trends in these factors continue. The projections do not take into account any future policy changes that have not yet occurred. They are constrained at a national level. The projected Darlington populations by age group and population estimates are shown in Table 3.3 and Figure 3.3a below. They show that the relative increase in the pension age population from 2006 to 2031, 30% (25.6–19.7), is more than twice that in the working age of 13% (68.1-60.2).

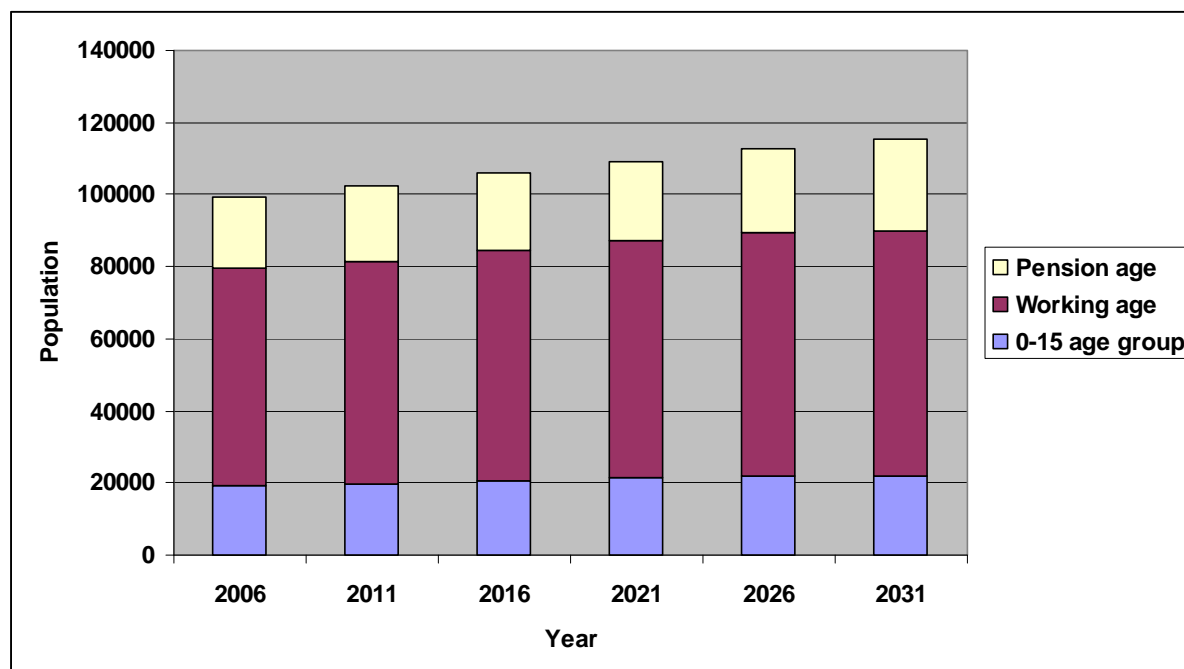
An important implication of the ageing population for health and social care services is the effect it will have upon the workforce required to provide care and support to those who need it. Dependency ratios relate to the number of people who are predicted to be dependent to the number of people who are expected to support that dependency in some way.

**Table 3.3\*\*:** Darlington projected population by age group and natural change and migration summary

Age Group	2006	2011	2016	2021	2026	2031
0-15	19.4	19.8	20.7	21.6	21.8	21.7
Working age	60.2	61.7	63.7	65.6	67.7	68.1
Pension age	19.7	20.8	21.4	22.0	23.0	25.6
<b>All Ages</b>	<b>99.3</b>	<b>102.3</b>	<b>105.8</b>	<b>109.3</b>	<b>112.5</b>	<b>115.3</b>
<b>Darlington Population Estimates</b>						
Population	99.3	102.3	105.8	109.3	112.5	115.3
Natural Change		0.3	0.3	0.3	0.2	0.2
Births		1.3	1.3	1.3	1.3	1.3
Deaths		1.0	1.0	1.0	1.1	1.1
All Migration Net		0.4	0.4	0.4	0.3	0.4
Internal Migration In		3.6	3.7	3.8	3.8	3.9
Internal Migration Out		3.2	3.3	3.3	3.4	3.5
International and Cross Border Migration In		0.5	0.5	0.5	0.5	0.5
International and Cross Border Migration Out		0.6	0.6	0.6	0.6	0.6

Source: Office for National Statistics, 2004-based long term Sub National Population Projections for England

**Figure 3.3a:** Projected changes in population by age group.

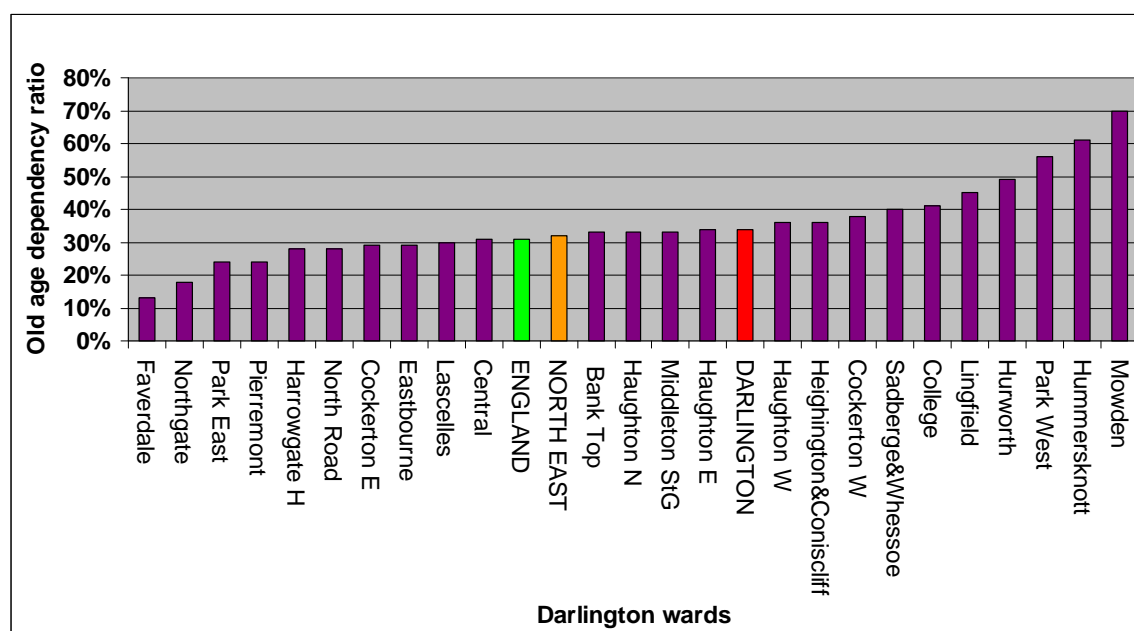


The Old Age Dependency Ratio is defined as the ratio of the number of people over the state pension age (60 for females and 65 for males) to those of working age (between 16 and pension age), expressed as a percentage. The higher the old age dependency ratio in an area, the more difficult it will be to staff health and social care services to meet the needs of the growing elderly population. Nationally, the old age dependency ratio is expected to increase from 30% to around 48% in 2044, raising questions about how the health and social care workforce can continue to maintain the living standards of pensioners

Source: National Office for Statistics 2009 Resident Population Estimates by Broad Age Band, June 2008

Figure 3.3b below show the Old Age Dependency Rates for Darlington wards (Figures are provided in Appendix 2)

**Figure 3.3b\*\*:** Old age dependency ratios for Darlington wards



### 3.4 Life expectancy at birth

All cause mortality is a fundamental and probably the oldest measure of the health status of a population. It represents the cumulative effect of the prevalence of risk factors, prevalence and severity of disease, and the effectiveness of interventions and treatment. Differences in levels of all-cause mortality reflect health inequalities between different population groups, for example, between gender, social classes and ethnic groups.

Life expectancy at birth is chosen as the preferred summary measure of all cause mortality as it quantifies the differences between areas in units (years of life) that are more readily understood and meaningful to most people than those of other measures. Life expectancy at birth is a summary measure of the all cause mortality rates in an area in a given period. It is the average number of years a new-born baby would survive, were he or she to

experience the particular area's age-specific mortality rates for that time period throughout his or her life.

Table 3.4 provides the male and female life expectancy at birth for Darlington. Children born in Darlington will, on average, live a year less than the average for England and in some parts of the borough life expectancy is even lower.

**Table 3.4\*\*:** Male and female life expectancy

Area	Male life expectancy	Female life expectancy
Darlington	76.3	80.4
North East	75.8	80.4
England	77.6	81.6

Source: National Statistics, 2005-2007

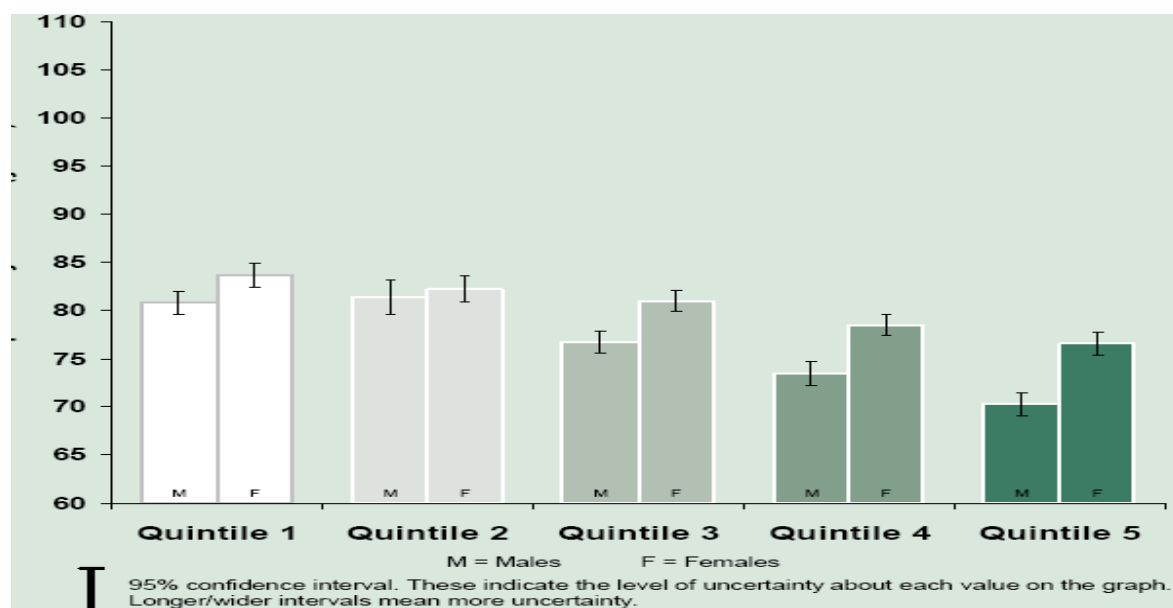
Predictive modelling indicates that, if current expectancy trends continue, the male inequality gap between Darlington and England will have decreased to 2.6% by 2013-15. However the impact of increasing obesity prevalence on heart disease, diabetes and some cancers may soon start to have a negative effect upon life expectancy.

Mortality data at a ward level involves small numbers and consequently small changes in the number of death may have some impact on the ranking of wards. The highest and lowest 2001-05 ward level life expectancy figures for Darlington differed by 14.4 years for men and 10.1 years for women.

### Life expectancy and deprivation

There are inequalities in life expectancy (2002-2006) for men and women who live in areas with different levels of deprivation within Darlington. Generally, there is decreasing male and female life expectancy with increasing levels of deprivation (Figure 3.4).

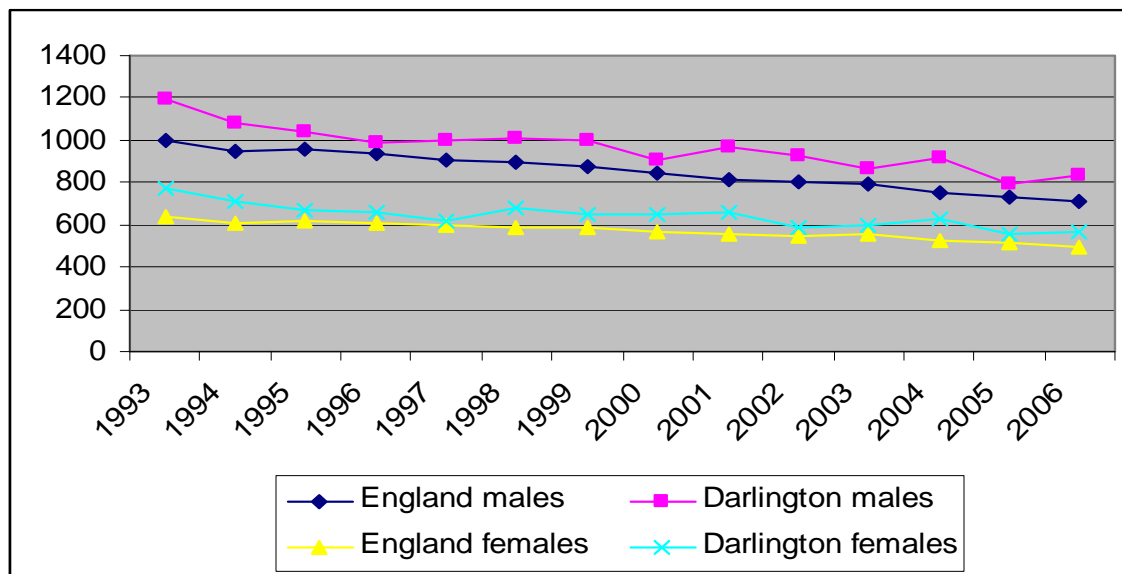
**Figure 3.4:** Life expectancy for males and females and levels of deprivation (Darlington Health Profile 2009)



### 3.5 All age all cause mortality

All age all cause mortality is a good proxy for life expectancy and is being used to measure progress towards meeting the life expectancy target. The graph below (Figure 3.5) shows mortality from all causes, directly age-standardised rate, all ages, per 100,000 European Standard population for males and females.

**Figure 3.5: All age all cause mortality**



#### Key messages:

- The Darlington population closely resembles the national profile, however there is a smaller proportion of young adults in Darlington than in England overall
- The population of retirement age is increasing
- People from Black and Ethnic Minority backgrounds make up 2.1% of the population. In addition, there are approximately 700 people in Darlington who have a Traveller or Gypsy background
- Levels of health and deprivation vary across Darlington

**Organisations across Darlington are working together to tackle health and social care issues and the wider determinants (income, employment, education, housing, the environment and crime, etc.) that impact on health and wellbeing of local people.**