

FOR MORE INFORMATION
CONTACT THE COUNTRYSIDE TEAM ON
01325 388 052.

Paths and cycleways provide access to the great variety of
Darlington's Wildspaces. The map indicates ways you can link up
to these wildspaces using a network of greenways and paths.

■ Rights of Way

Darlington's Local Nature Reserves.
active link to well managed and interesting countryside, such as
use of Greenways for walking, cycling or horse riding, provides an
of ways can help improve lives both physically and mentally. The
Good quality green areas for people to use and enjoy in a variety
food we eat, to the holidays we take or the places we may walk.
life, from the clean air we breathe, the water we drink and the
People and nature are linked together in many areas of everyday

■ People and Nature

Biodiversity refers to the abundance and variety of different plants
and animals that exist in the environment. Our Nature Reserves
and wild spaces are managed to help preserve and encourage a
biodiversity and so provides safe havens for a wide variety of
wildlife.

■ Biodiversity

Darlington Borough now has 7 Local Nature Reserves and 3
Community Woodlands (see map). These areas have been identified
as having a greater value for wildlife and for people to enjoy.
They are protected and managed by Darlington Borough Council,
through partnerships with local resident volunteers and other
organisations.

■ Darlington's Local Nature Reserves

**WHAT IS A
WILDSPACE**

**ENJOY DARLINGTON'S
WILDSAPACES**

**BRINGING
GREENSPACES
TO LIFE**



Designed and produced by differentia.co.uk. Printed on Kevite recycled paper using soya based inks.



If you would like some more information contact us at:
The Countryside Team, Darlington Borough Council,
The Beehive, Lingfield Point, McMullen Road, Darlington,
DL1 1YN. Tel: (01325) 388728. www.darlington.gov.uk

GET IN TOUCH

You can keep an eye on the local nature
reserves, or help survey wildlife as a Volunteer
Ranger, or you can help keep the rights of way
in good condition as a Path Monitor. Get involved
in a range of interesting and fun events as an Events Assistant
or carry out important maintenance and site improvement works
as a Practical Volunteer. As well as helping the environment,
volunteering gives you the chance to gain work experience, stay
healthy and meet new people. Social events and training sessions
are also arranged so that you can meet other volunteers throughout
the year.



■ Volunteering
Would you like to play an important role in helping the environment
on your doorstep? Why not join the Countryside
Team as one of our dedicated volunteers? There
are various volunteering opportunities, not all
digging ditches and planting trees although
you can do that too!

**ACTIVE
WILDSPACE**

OUT AND ABOUT



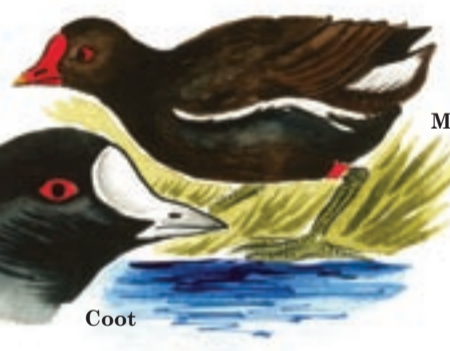
LIVE AND LEARN



**RELAX AND ENJOY
YOUR**



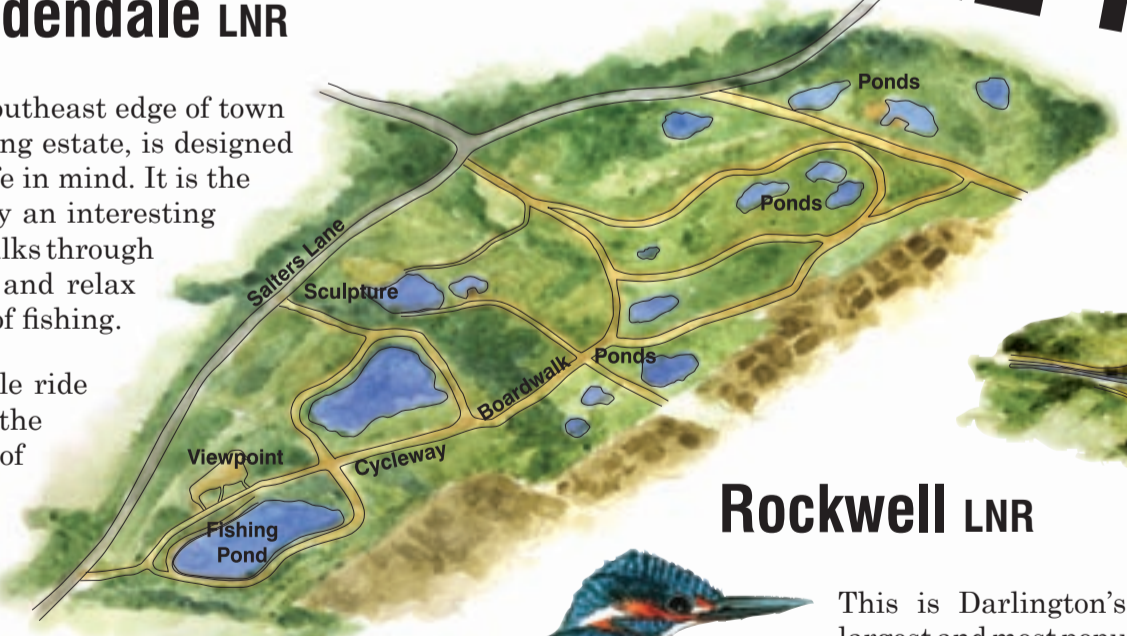
LOCAL NATURE RESERVES



Maidendale LNR

This newly created site, on the southeast edge of town
and situated next to a new housing estate, is designed
with both local people and wildlife in mind. It is the
ideal place in Darlington to enjoy an interesting
walk along footpaths and boardwalks through
wetlands and grasslands, or sit and relax
by one of 2 new ponds for a spot of fishing.

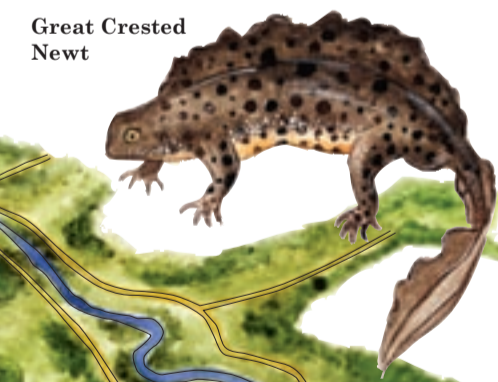
You may prefer to go for a bicycle ride
along the cycleway or walk up the
sculpture hill to enjoy views of
the reserve, the town or the
countryside beyond.



Rockwell LNR

This is Darlington's
largest and most popular
nature reserve. It has excellent
access for visitors including
disabled access and a cycle
route, which helps this site
link the centre of town with
the wider countryside. Ten years ago
this site was restored to its present form by
creating new meanders, pool features and new
habitat along this stretch of the River Skerne.

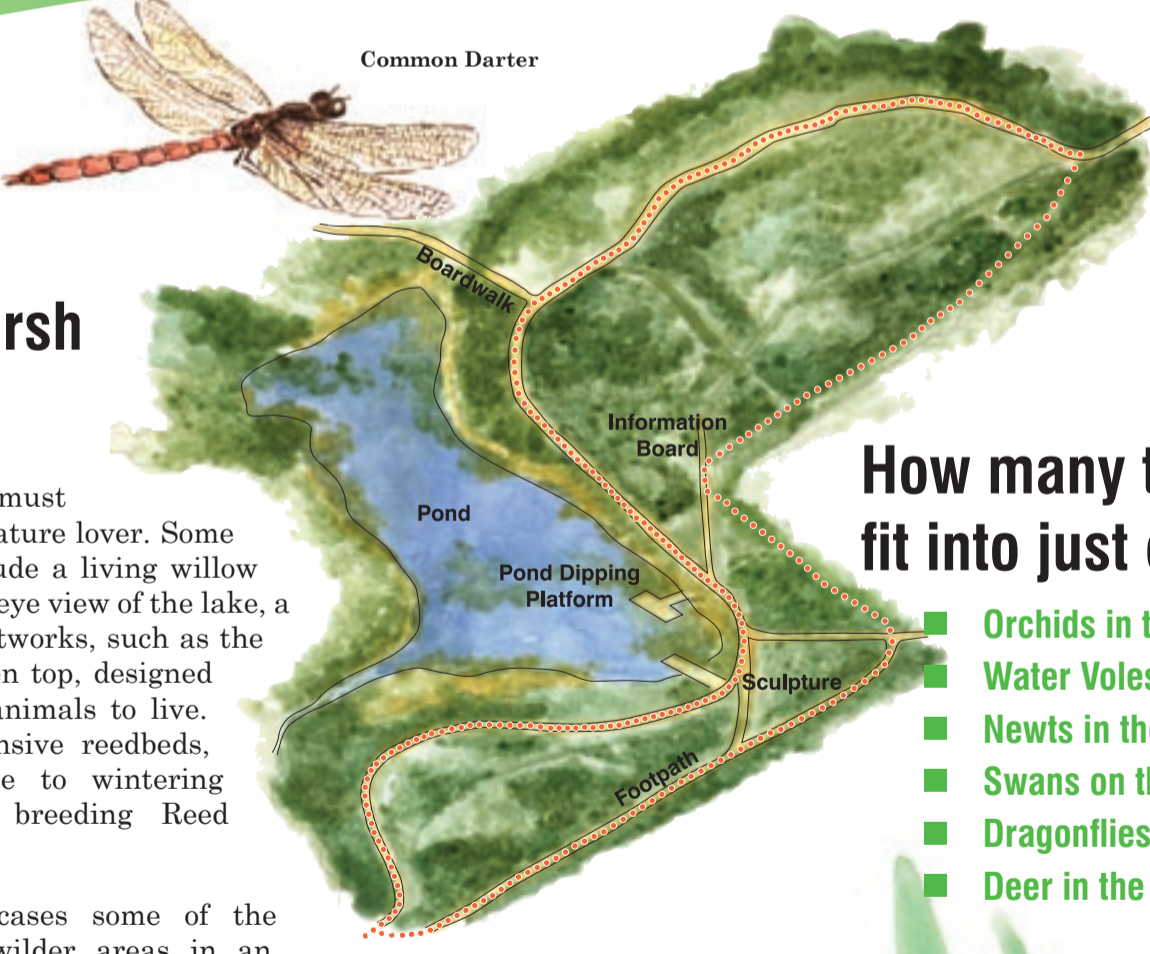
Today the site is the most likely place to see the rare
and highly endangered Water Vole, along with healthy
fish populations, Kingfisher and even a chance of seeing the recent
return of the Otter to Darlington.



**Drinkfield Marsh
LNR**

A visit to Drinkfield is a must
for any countryside or nature lover. Some
of its best features include a living willow
pier, to give you a ducks eye view of the lake, a
dipping platform and artworks, such as the
stone wall with a wooden top, designed
with spaces inside for animals to live.
There's also extensive reedbeds,
which are home to wintering
Bittern and breeding Reed
Warblers.

Drinkfield showcases some of the
possibilities for wilder areas in an
urban area. It is a mosaic of industry,
housing, transport and education, all sitting hand in
hand with a highly biodiverse green space
and nearby recycling centre.



**How many things can you
fit into just one day?**

- Orchids in the meadow at The Whinnies LNR
- Water Voles in the river at Rockwell LNR
- Newts in the ponds at Brinkburn LNR
- Swans on the lake at Drinkfield LNR
- Dragonflies by the ponds at Brankin moor LNR
- Deer in the glades of Geneva Wood LNR



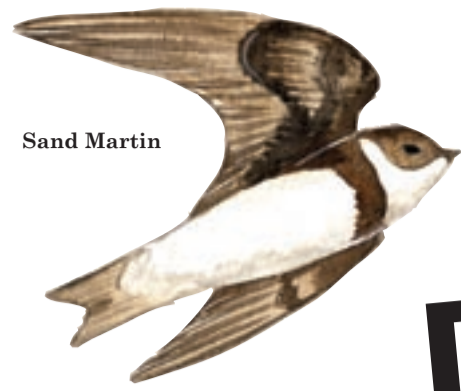
Orange Tip
Butterfly

YOUR WILDSAPACES



Common Dog
Violet

Six Spot
Burnet
Moth



Sand Martin

DARLINGTON'S GREEN SPACES ...

Linking people to spaces:

The Key to Darlington's Greenspace

The map shows different shades and textures of green. This is how we illustrate the different nature of green spaces in and around Darlington. The more wildlife friendly or biodiverse an area, the more textured and richly coloured that area appears on the map, for example West Park a site of rich variety and therefore shown as Dark Green.

In this way we can demonstrate the many types of interesting 'Green' areas around our town. These areas are also rich in a wide variety of wildlife from orchids at The Whinnies to dragonflies at Brankin Moor.

These wildlife rich sites are also great places for recreation, kite flying, cycling or simply just sitting and enjoying bird song and the wind through the trees.

You can connect with nature right here on your own doorstep. Look again at the map and plan a visit or two to your own rich wildlife heritage in Darlington's Green Spaces.



Dingy Skipper Butterfly



KEY

	LNR BOUNDARY		SEMI-NATURAL		URBAN
	PARKS		AMENITY		GREEN ROUTES

All our Green Spaces are right on your doorstep

Take a tour with us through some of the highlights.

1 The Whinnies Local Nature Reserve (LNR) is home to a variety of unusual orchids and butterflies, with water voles near to the pond. It is also a wonderfully diverse site of grassland, woodland and wetland. Activities you can enjoy include pond dipping, kite flying, walking and cycling.

2 Drinkfield Marsh LNR is a distinctive area which links a series of weirs leading to an established lake, home to many over wintering birds. This is a wonderful place to look for signs of water voles, and there is a healthy population living here.

3 Brinkburn LNR is a small site dominated by a pond and wet woodland. It is an ideal starting place for a visit to the nearby LNR's of Drinkfield Marsh, Brinkburn as well as the popular West Park.

4 Brankin Moor LNR is another small site with a woodland rich in orchids and other woodland plants. A must for a spring visit!

5 Geneva Wood LNR is another small woodland site where you can explore and look for signs of deer.

6 Rockwell LNR is one of our most important Green Spaces as it is in the heart of the town and yet it is a fantastic place for exploring wildlife and enjoying footpaths through grasslands and wetlands.

7 Maidendale Fishing & Nature Reserve LNR is a very popular fishing resource so has something for everyone including wetlands, grasslands, spring flowers and it is great to cycle along the Greenway.

8 West Park LNR is a special site with its chalk grassland - here you will find specialist plants such as birds foot trefoil and other chalk loving species.

There is so much more in Darlington including Community Woodlands on the edge of town, making them great destinations for cycling! Darlington's Green Spaces provide a rich resource of diversity for people to enjoy and wildlife to flourish.

... ARE YOUR WILDSPACES