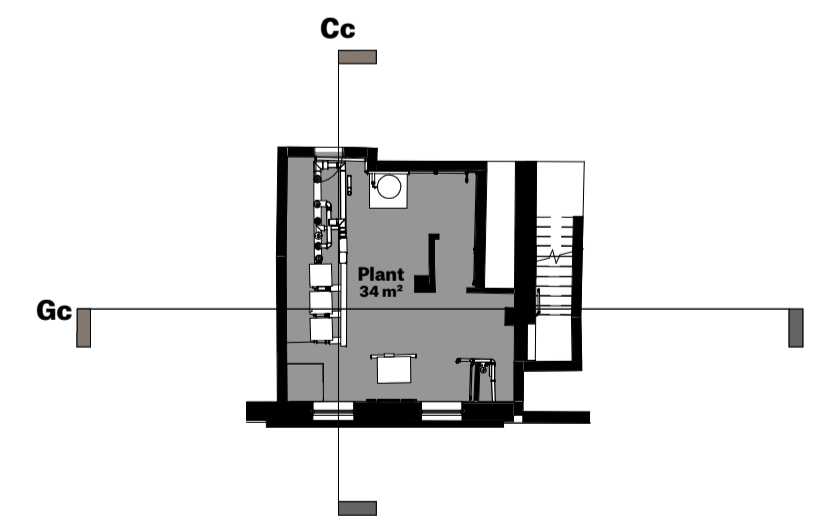


NOTE: Potential option raised by client/interpretation consultants for demolition of bay and infill with structural glass system. Item to be considered following completion of stage 3 submission.

NOTE: Extent of new glazed balustrade system or removable/temporary edge protection to be confirmed with end user/interpretation consultants.

NOTE: Historic items to be retained. Locations to be confirmed by Interpretation Consultants.

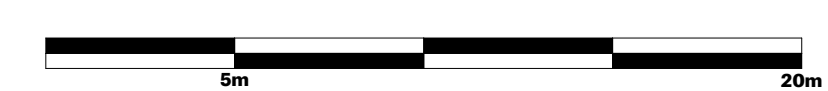
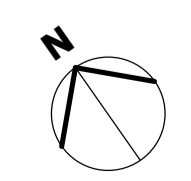
NOTE: Extent of new glazed balustrade system or removable/temporary edge protection to be confirmed with end user/interpretation consultants.



# SPACE

Spaceworks, Benton Park Road, Newcastle upon Tyne, NE7 7LX  
 T: +44 (0)1944 800 6660  
 www.spacearchitects.co.uk

Project <b>Darlington Railway Heritage Quarter</b>				
Drawing Title <b>GA Plans Proposed - Head of Steam</b>				
Project No. <b>K00231</b>	Drawing No. <b>Z2-ZZ-DR-A-01101</b>	Status <b>S1</b>	Revision <b>P2</b>	Scale at A1 <b>1:200</b>
File Reference: <b>DRHQ-SPACE-Z2-ZZ-DR-A-01101</b>				



Revision	Description	Author	Checker	Date
P2	VR/Augmented Display 'pod' relocated as per DBC/WDC instruction of 17.11.2020.	CG	DC	17.11.2020
P1	First Issue to Client/Consultant Team for Information	CG	DC	15.10.2020