

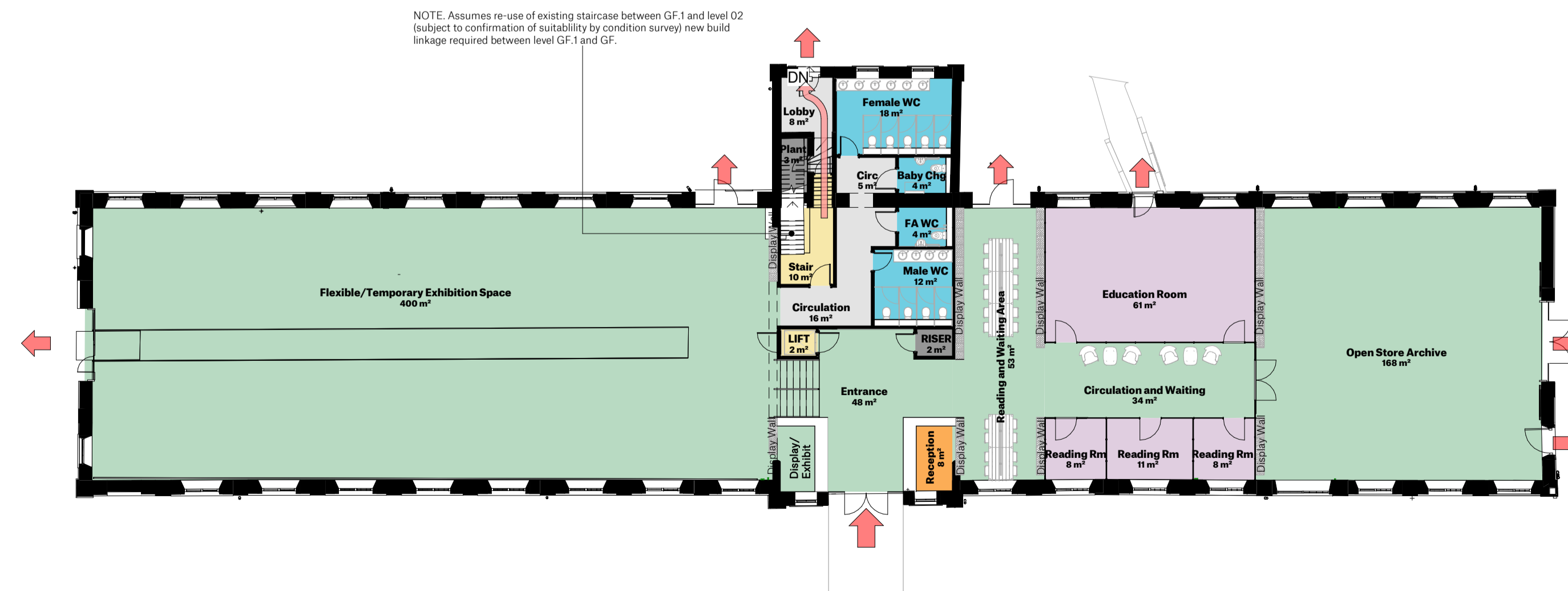
| Revision | Description  | Author | Checker | Date       |
|----------|--|--------|---------|------------|
| P1       | First Issue to Team for Stage 2 Information                | CG     | DC      | 27.07.2020 |
| P2       | Drawing Number Updated to Comply with WD Numbering System  | CG     | DC      | 06.08.2020 |
| P3       | Model Updated Based Upon 360 Mapping Survey Model Received | CG     | DC      | 01.10.2020 |



**Level 02 GA - Proposed**  
1:200

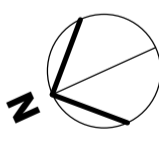


**Level 01 GA - Proposed**  
1:200



**Ground Floor GA - Proposed**  
1:200

| Accommodation Schedule  |                      |                                     |         |  |
|-------------------------|----------------------|-------------------------------------|---------|--|
| Level                   | Department           | Name                                | Area    |  |
| Level GF                | Circulation          | Lobby                               | 8 m²    |  |
| Level GF                | Circulation          | Circ                                | 5 m²    |  |
| Level GF                | Circulation          | Circulation                         | 16 m²   |  |
| Circulation: 3          |                      |                                     | 28 m²   |  |
| Level GF                | Plant                | Plant                               | 3 m²    |  |
| Plant: 1                |                      |                                     | 3 m²    |  |
| Level GF                | Sanitary             | Male WC                             | 12 m²   |  |
| Level GF                | Sanitary             | Female WC                           | 18 m²   |  |
| Level GF                | Sanitary             | Baby Chg                            | 4 m²    |  |
| Sanitary: 3             |                      |                                     | 33 m²   |  |
| Level GF                | Vertical Circulation | LIFT                                | 2 m²    |  |
| Level GF                | Vertical Circulation | Stair                               | 10 m²   |  |
| Vertical Circulation: 2 |                      |                                     | 12 m²   |  |
| Level GF: 9             |                      |                                     | 75 m²   |  |
| Level GF:1              | Education Room       | Reading Rm                          | 8 m²    |  |
| Level GF:1              | Education Room       | Reading Rm                          | 11 m²   |  |
| Level GF:1              | Education Room       | Reading Rm                          | 8 m²    |  |
| Level GF:1              | Education Room       | Education Room                      | 61 m²   |  |
| Education Room: 4       |                      |                                     | 88 m²   |  |
| Level GF:1              | Museum Exhibition    | Entrance                            | 148 m²  |  |
| Level GF:1              | Museum Exhibition    | Open Store Archive                  | 168 m²  |  |
| Level GF:1              | Museum Exhibition    | Reading and Waiting Area            | 53 m²   |  |
| Level GF:1              | Museum Exhibition    | Circulation and Waiting             | 34 m²   |  |
| Level GF:1              | Museum Exhibition    | Flexible/Temporary Exhibition Space | 400 m²  |  |
| Museum Exhibition: 5    |                      |                                     | 702 m²  |  |
| Level GF:1              | Plant                | RISER                               | 2 m²    |  |
| Plant: 1                |                      |                                     | 2 m²    |  |
| Level GF:1              | Sanitary             | FA WC                               | 4 m²    |  |
| Sanitary: 1             |                      |                                     | 4 m²    |  |
| Level GF:1              | Shop                 | Reception                           | 8 m²    |  |
| Shop: 1                 |                      |                                     | 8 m²    |  |
| Level GF:1: 12          |                      |                                     | 805 m²  |  |
| Level 01                | Circulation          | Circ                                | 9 m²    |  |
| Circulation: 1          |                      |                                     | 9 m²    |  |
| Level 01                | Plant                | RISER                               | 2 m²    |  |
| Plant: 1                |                      |                                     | 2 m²    |  |
| Level 01                | Sanitary             | Staff Chng                          | 5 m²    |  |
| Level 01                | Sanitary             | WC                                  | 2 m²    |  |
| Sanitary: 2             |                      |                                     | 8 m²    |  |
| Level 01                | Staff and Admin.     | Staff Kitchen                       | 9 m²    |  |
| Staff and Admin.: 1     |                      |                                     | 9 m²    |  |
| Level 01                | Storage              | Storage/Work Room                   | 48 m²   |  |
| Storage: 1              |                      |                                     | 48 m²   |  |
| Level 01                | Vertical Circulation | Stair                               | 6 m²    |  |
| Level 01                | Vertical Circulation | Stair                               | 7 m²    |  |
| Level 01                | Vertical Circulation | LIFT                                | 2 m²    |  |
| Vertical Circulation: 3 |                      |                                     | 15 m²   |  |
| Level 01: 9             |                      |                                     | 90 m²   |  |
| Level 02                | Circulation          | Circulation                         | 16 m²   |  |
| Circulation: 1          |                      |                                     | 16 m²   |  |
| Level 02                | Office               | Office/Meeting                      | 22 m²   |  |
| Level 02                | Office               | Office                              | 6 m²    |  |
| Office: 2               |                      |                                     | 34 m²   |  |
| Level 02                | Plant                | Plant/Store                         | 19 m²   |  |
| Level 02                | Plant                | RISER                               | 2 m²    |  |
| Level 02                | Plant                | Plant                               | 49 m²   |  |
| Level 02                | Plant                | Plant                               | 3 m²    |  |
| Plant: 4                |                      |                                     | 72 m²   |  |
| Level 02                | Storage              | Cleaner                             | 3 m²    |  |
| Storage: 1              |                      |                                     | 3 m²    |  |
| Level 02                | Vertical Circulation | Stair                               | 7 m²    |  |
| Level 02                | Vertical Circulation | Stair                               | 7 m²    |  |
| Level 02                | Vertical Circulation | LIFT                                | 2 m²    |  |
| Vertical Circulation: 3 |                      |                                     | 16 m²   |  |
| Level 02: 11            |                      |                                     | 140 m²  |  |
| Level 02: 11            |                      |                                     | 140 m²  |  |
| Grand total: 41         |                      |                                     | 1110 m² |  |



# SPACE

Spaceworks, Benton Park Road, Newcastle upon Tyne, NE7 7LX  
T: +44 (0)1944 800 6660  
www.spacearchitects.co.uk

|   |  |                     |                       |                             |
|---|--|---------------------|-----------------------|-----------------------------|
| Project<br><b>Darlington Railway Heritage Quarter</b>     |  |                     |                       |                             |
| Drawing Title<br><b>GA Plans Proposed - Carriageworks</b> |  |                     |                       |                             |
| Project No.<br><b>K00231</b>                              | Drawing No.<br><b>Z3-ZZ-DR-A-01101</b> | Status<br><b>S1</b> | Revision<br><b>P3</b> | Scale at A1<br><b>1:200</b> |
| File Reference: <b>K00231-SPACE-Z3-ZZ-DR-A-01101</b>      |  |                     |                       |                             |

