

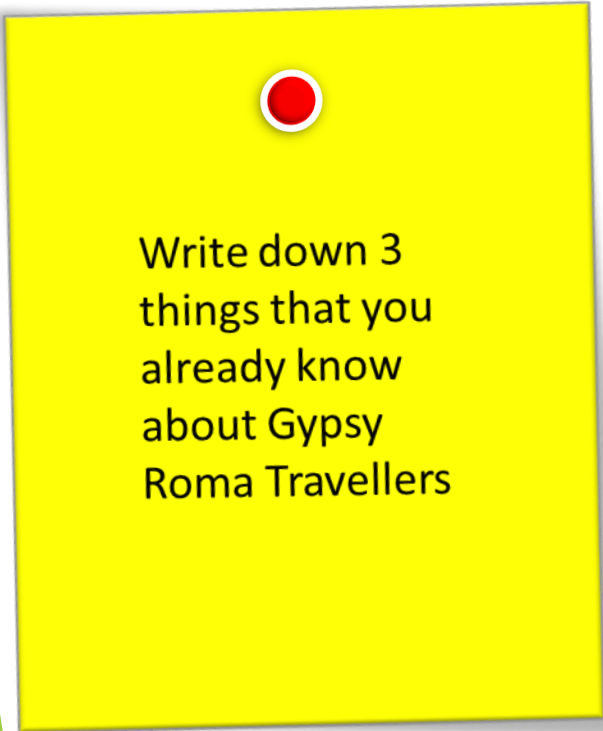


Gypsy Roma Traveller Cultural training Traveller Education Service Darlington

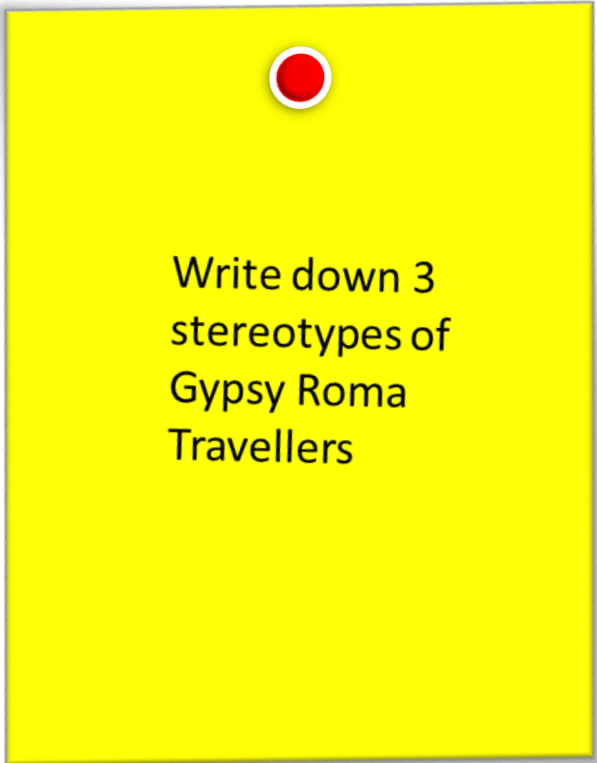
NQT Training

Most information for this presentation was taken from the report, "Tackling inequalities faced by Gypsy, Roma, and Traveller communities" published in 5 April 2019 in parliament

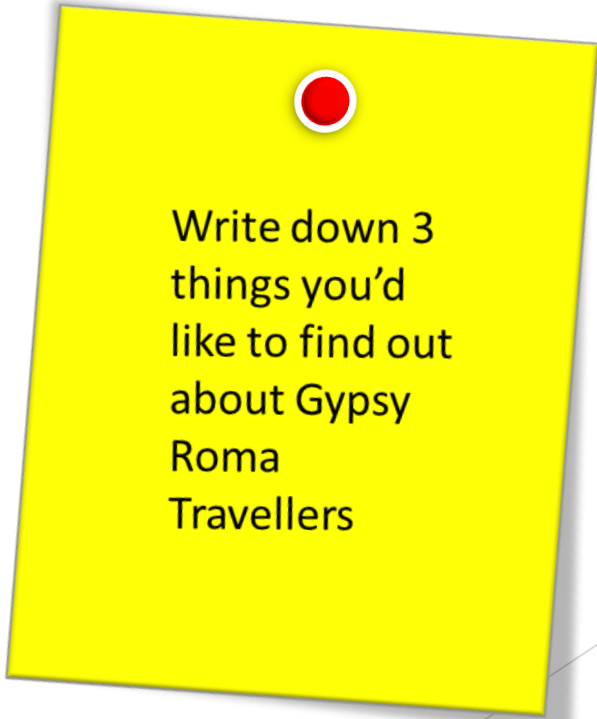
Activity



Write down 3 things that you already know about Gypsy Roma Travellers



Write down 3 stereotypes of Gypsy Roma Travellers



Write down 3 things you'd like to find out about Gypsy Roma Travellers

Role of The Traveller Education Service Darlington

WE WORK WITH:



Educational
establishments



Families

What Does The Service Offer?

Advice and support to schools on issues relating to the inclusion of Gypsy, Roma and Traveller children in educational settings.

We provide an outreach service directly to these families to support access to, and inclusion, in education.

Coverage: 0-25 Years

To ensure their families have unhindered access to universal services.

What is a Gypsy, Roma, Traveller?

- ▶ Gypsy and Traveller is a collective term used to describe a wide variety of cultural and ethnic groups.
- ▶ Ethnic identity is not lost when members of the communities settle, but it continues and adapts to the new circumstances. Although most Gypsies and Travellers see travelling as part of their identity, they can choose to live in different ways, including permanently 'on the road', in caravans or mobile homes, or in settled accommodation (for part or all of the year).
- ▶ Gypsy Roma Travellers are the most marginalised communities and continue to suffer extreme levels of prejudice and discrimination-
- ▶ In the 2011 census for England and Wales recorded 74 per cent of Gypsies and Travellers as living in houses, flats, maisonettes or apartments. Most Gypsies and Travellers were born in the UK (88 per cent).

Numbers of Gypsy Roma Travellers in Darlington.

Most of the GRT that live permanently in Darlington send their children to school

Some children are nomadic and go travelling with their families for a number of months of the year. This could be in the UK or in Europe, Australia, Canada, USA-wherever the work is.

Implication for GRT children when travelling abroad for a number of months is that they are out of the Education system completely=no education=more vulnerable.

Safeguarding issues-we haven't got eyes on them.

Four main Primary schools that the GRT go to Northwood Primary, St Teresa Primary RC school Rydal Academy

Darlington GRT Community Members

- ▶ In County Durham and Darlington the Gypsy Traveller community form the largest single ethnic minority grouping in the area.
- ▶ The proportion of Darlington residents that identify themselves in the 2011 Census as Gypsy and Travellers is three times higher than the national average but equates to only 0.3% of the population.
- ▶ The Census return shows 350 individuals declaring as Gypsy or Irish Traveller locally. School Census 2015 information shows that 1.3% of the school population of Darlington is from the Gypsy and Traveller community. This is 3.7 times the national average.

Numbers of Gypsy Roma Travellers in Darlington.

Using data from the Census January 2020 there are:

251 Children and young people identified as GRT on school role.

198 of these are in Primary School

53 of these are in Secondary School.

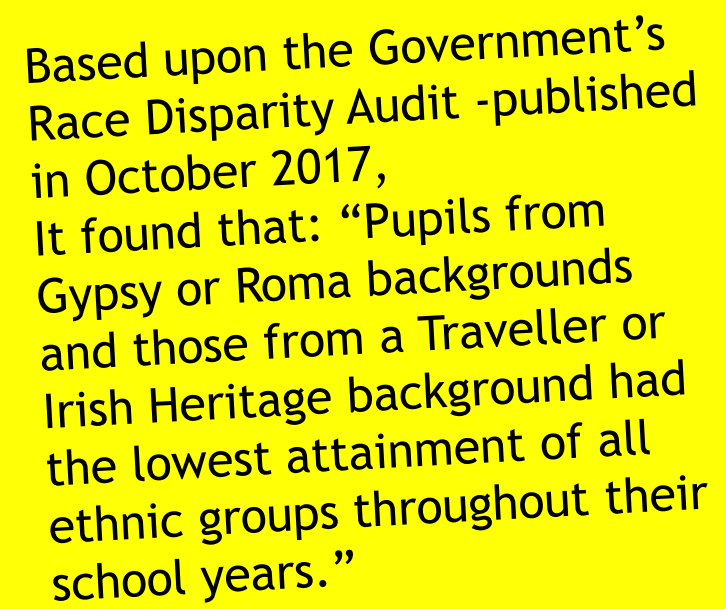
There are 106 GRT Electively Home Educated, 18 of which are under 11.

This data does not include those pre school children who attend nurseries or those children whose parents decide not to ascribe their identity due to fear, mistrust and discrimination.



www.youtube.com/watch?v=1bhBbMrF8Z0

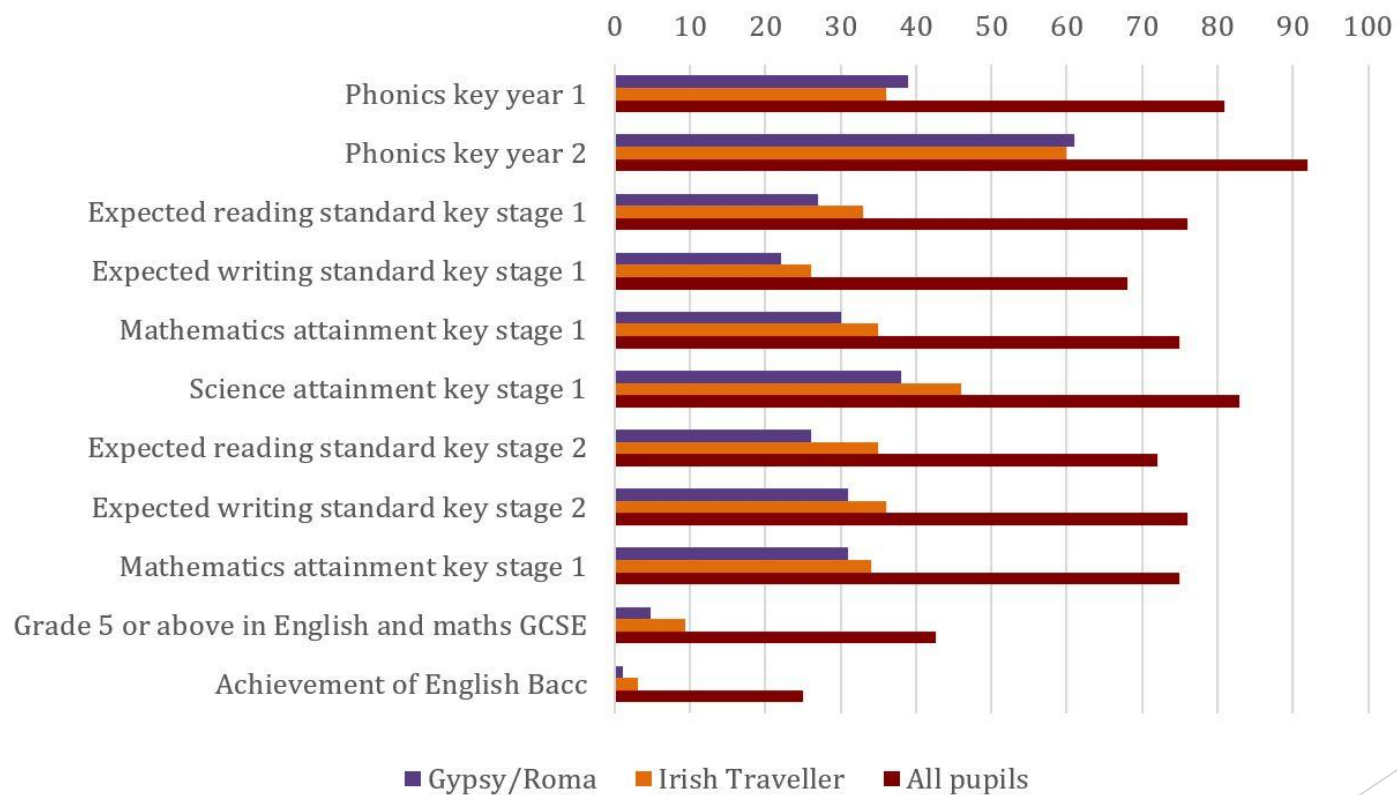
Evidence of Poor Outcomes in Education



Based upon the Government's Race Disparity Audit -published in October 2017, It found that: "Pupils from Gypsy or Roma backgrounds and those from a Traveller or Irish Heritage background had the lowest attainment of all ethnic groups throughout their school years."

Evidence of poor outcomes in education

- ▶ Based upon the Government's Race Disparity Audit was first published in October 2017, it found that: "Pupils from Gypsy or Roma backgrounds and those from a Traveller or Irish Heritage background had the lowest attainment of all ethnic groups throughout their school years."



Discrimination

Racism towards Gypsies and Travellers is still common, frequently overt and seen as justified

- ▶ A survey carried out by Traveller Movement, a national Gypsy, Roma and Traveller charity, found that, in 2017, 91 per cent of the 199 respondents had experienced discrimination and 77 per cent had experienced hate speech or a hate crime.
- ▶ Gypsy, Roma and some Traveller people are protected against discrimination under the Equality Act 2010 in England, Wales and Scotland and under the Race Relations (NI) Order 1997 in Northern Ireland.
- ▶ The last acceptable form of racism?

The pervasive discrimination and prejudice experienced by Gypsy, Roma and Traveller communities A report by The Traveller Movement September 2017

The Last Acceptable Form of Racism?

The pervasive discrimination and prejudice experienced by Gypsy, Roma and Traveller communities A report by The Traveller Movement September 2017

Key findings of the report

General

- ▶ 91% experienced discrimination because of their ethnicity

Education, Employment and Healthcare

- ▶ 70% experienced discrimination in some aspect of education
- ▶ 49% experienced discrimination in some aspect of employment
- ▶ 30% experienced discrimination in relation to accessing health care

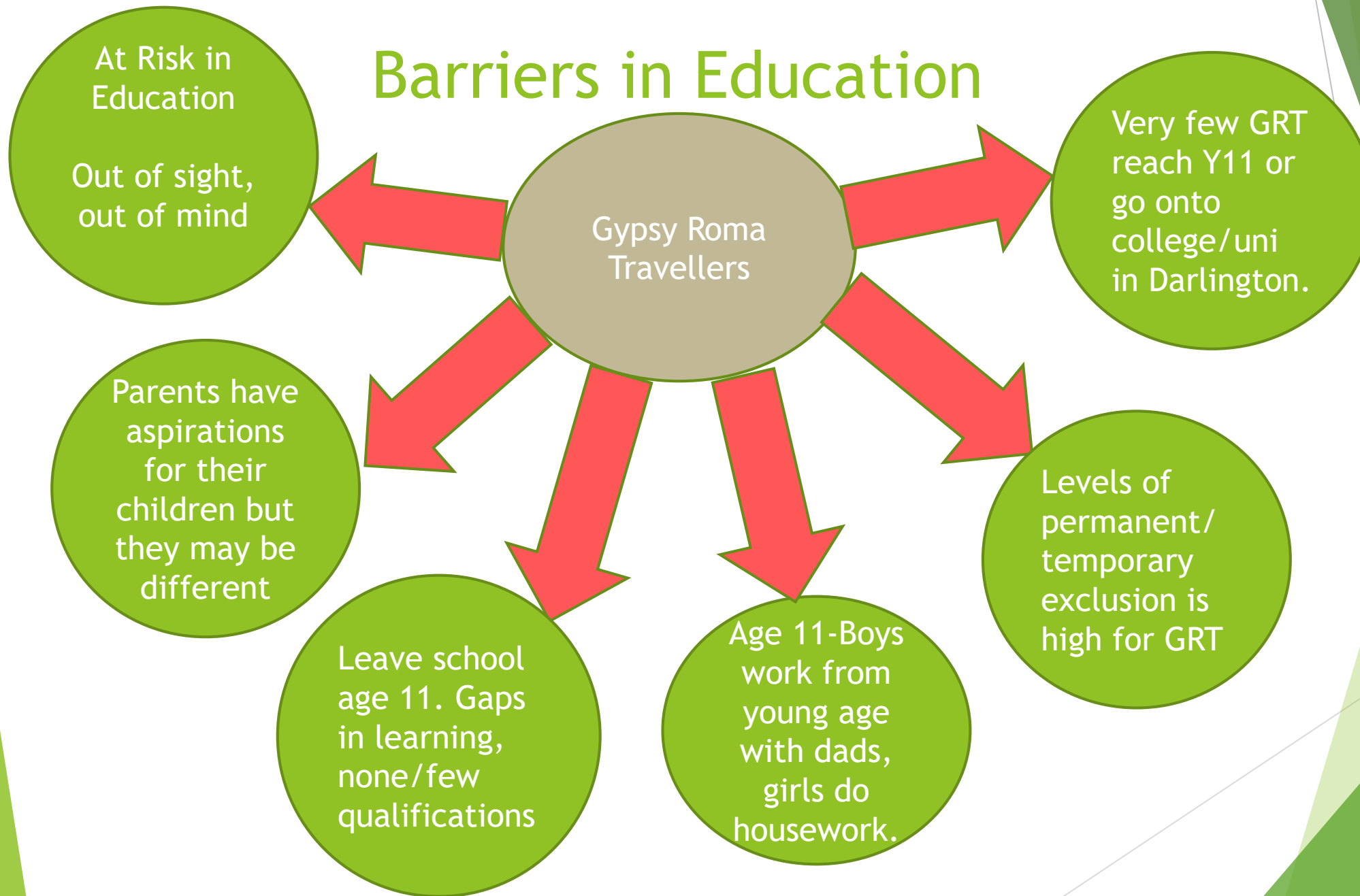
Access to services and hate crime

- ▶ 55% had been refused services because of their ethnicity
- ▶ 77% experienced hate speech or a hate crime

Coping mechanisms and seeking help

- ▶ 76% had hidden their ethnicity to avoid discrimination or prejudice
- ▶ 77% had not sought legal help after experiencing discrimination

Barriers in Education



At Risk in Education

Out of sight,
out of mind

Barriers in Education

Gypsy Roma Travellers

Very few GRT reach Y11 or go onto college/uni in Darlington.

Levels of permanent/
temporary exclusion is high for GRT

Age 11-Boys work from young age with dads, girls do housework.

Leave school age 11. Gaps in learning, none/few qualifications

Parents have aspirations for their children but they may be different

Breaking Down Barriers

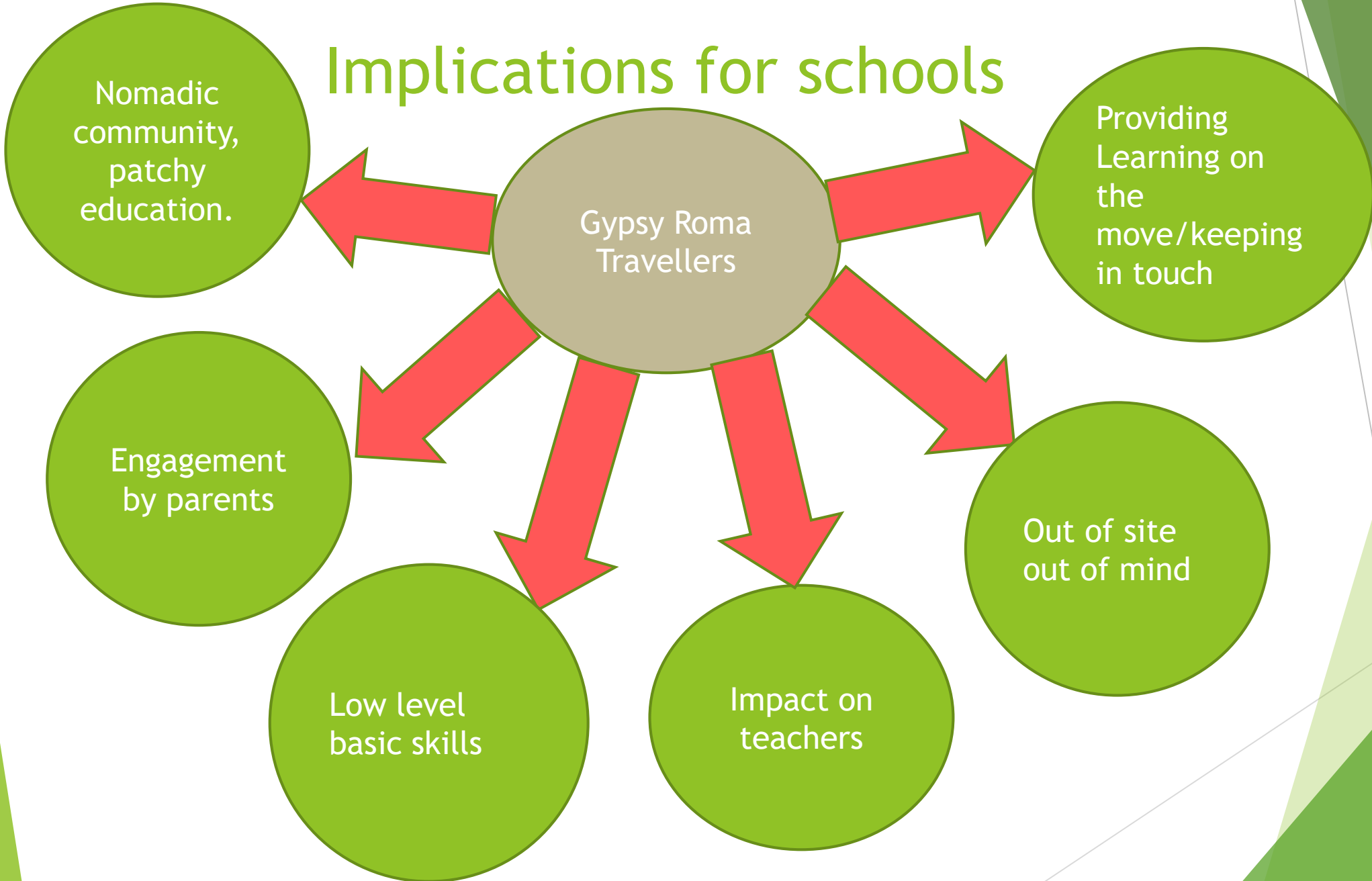


Digital Barriers and Digital Exclusion

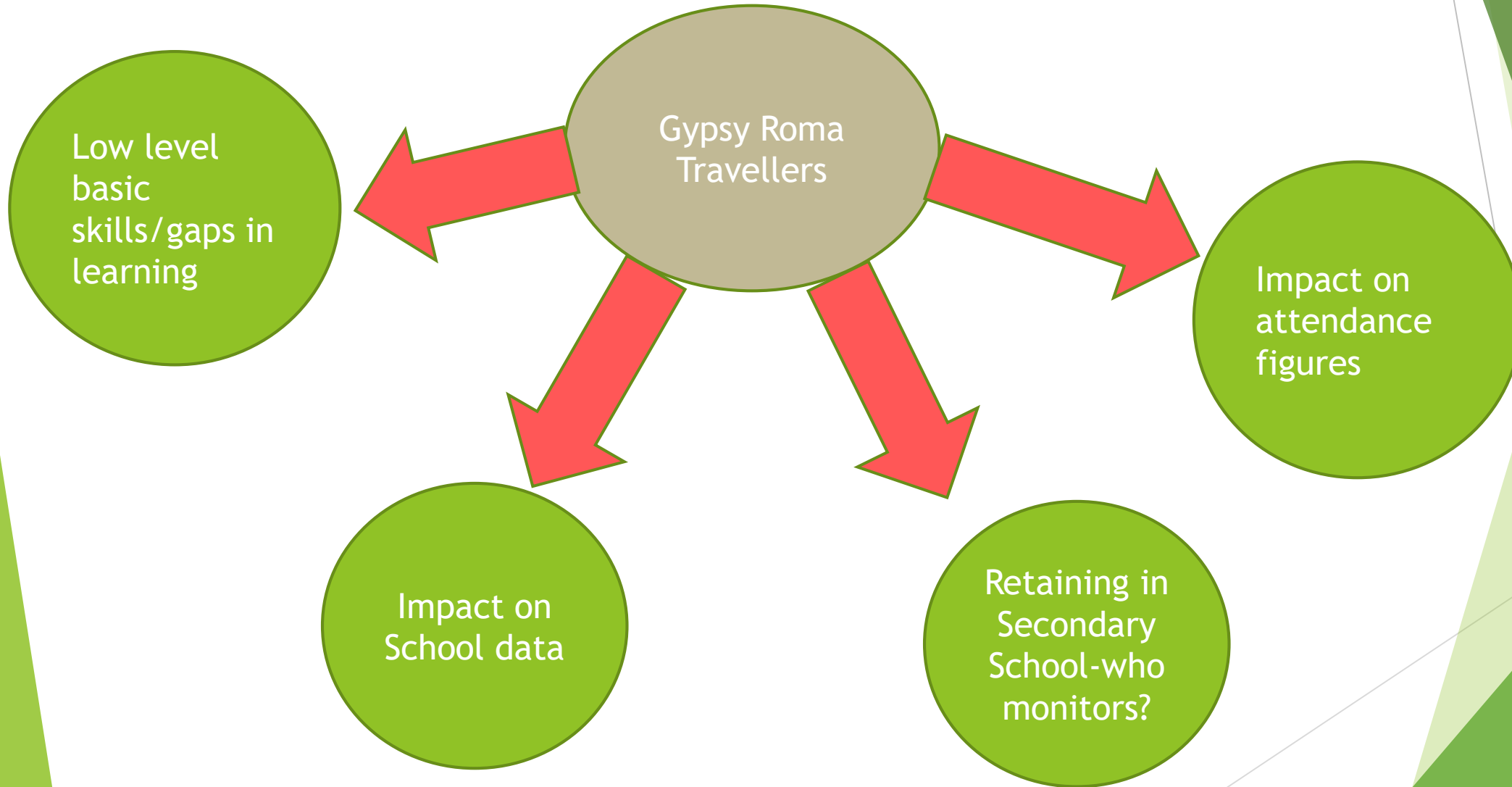
- Not all GRT can access the internet or have the skills
- One in five Gypsy and Traveller participants had never used the internet, compared to one in ten members of the general population. □
- Over half of Gypsy and Traveller participants said that they did not feel confident using digital technology by themselves. □
- Only two in five Gypsies and Travellers surveyed said that they use the internet daily, compared to four out of five of the general population. □
- Only 38% of Gypsies and Travellers (33% if housed) had a household internet connection, compared to 86% of the general population.
- Many services being offered throughout COVID have been signposted towards technology. This is an alien environment to many GRT, especially those who have got poor IT skills and poor literacy skills.

(Joe Scadding and Sarah Sweeney | Friends Families and Travellers | September 2018)

Implications for schools



Implications for schools



Implications for schools

Gypsy Roma Travellers

Due to the fact that many Gypsy Travellers experience discrimination and bullying from the wider society it is vital that:

- ▶ There is a robust Behaviour Policy which is adhered to and reviewed.
- ▶ All staff have knowledge of the barriers to education that exist for Gypsies and Travellers. (School business managers/cooks/cleaners/TA s Senior Leadership team)
- ▶ All staff are aware of Gypsy Roma Traveller culture-training can be provided.
- ▶ That staff take positive action to assess and bridge the gaps in learning.
- ▶ Build relationships with the children, family and the community
- ▶ Strategies are developed to support parents to engage with their children's learning.

Implications for schools

Importance of understanding and valuing Gypsy Roma Traveller families

- ▶ Good practice should include seeing GRT as vulnerable learners
- Most do not meet the requirements of Pupil Premium, but should be monitored in a similar way.
- Consider How is the school meeting the needs of this vulnerable group?
- How well does the school explore Equality and Diversity in relation to Gypsy Roma Travellers for the whole school populations.
- Aim to keep children in school for as many years as possible and support their journey

Barriers to Accessing Education



Barriers to Accessing Education

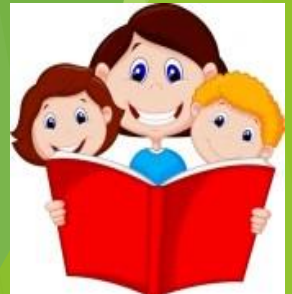


What barriers do you think the traveller community have in accessing education?

The parents ?

The children ?

Write down as many barriers as you can think of.



Implications for schools

Gypsy Roma
Travellers

Importance of understanding and valuing Gypsy Roma Traveller families

Solutions/Recommendations

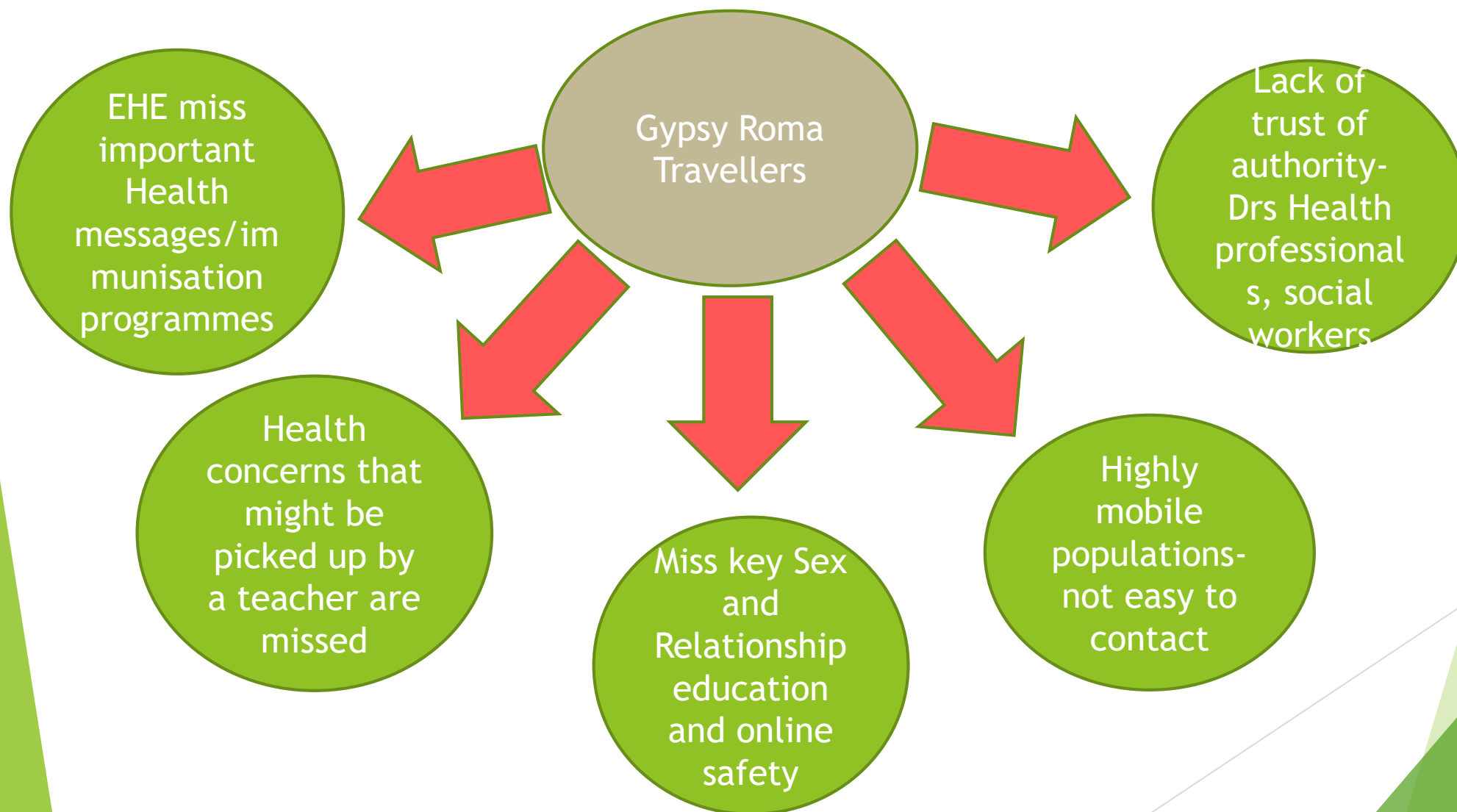
- Staff training
- Cultural awareness of GRT culture
- Cultural awareness workshops for all pupils
- Opportunities for GRT to share their culture and value it.
- Robust Behaviour policy to deal with discrimination and bullying
- Systems developed so that GRT progress is tracked and highlighted
- GRT champion, Teacher or member of Senior Leadership Team
- Celebrate Gypsy Roma Traveller Month in June.

Implications for Class Teachers

Gypsy Roma Travellers

- You may have none, 1 or 10 Travellers in your class.
- You have a responsibility to quickly establish relationships with the child and the parents
- A child or group of children could join or leave at any point in the term.
- You are responsible for baselining them and quickly identifying gaps in learning
- Parents may not be able to read and write and may not be able to help with home work or reading.
- You need to adopt a proactive positive attitude.
Experiences maybe poor and therefore you need to invest time in making the child or student feel welcome, safe and happy so that they can learn effectively.
- Whether the student is expected to stay a week a month or a year they should be provided with equal opportunities to progress. Teachers need to have high expectations of each and every pupil.

Implications of Elective Home Education and GRT



Moving on, Aiming High



► [Moving On Aiming High Video May 2019 on Vimeo](#)