

Do not scale from this drawing.

SAFETY HEALTH AND ENVIRONMENTAL INFORMATION

IN ADDITION TO THE HAZARD/RISKS NORMALLY ASSOCIATED WITH THE TYPES OF WORK DETAILED ON THIS DRAWING, NOTE THE FOLLOWING RISKS AND INFORMATION.

RISKS LISTED HERE ARE NOT EXHAUSTIVE. REFER TO DESIGN ASSESSMENT FORM NO.

CONSTRUCTION

DEMOLITION

FOR INFORMATION RELATING TO USE, CLEANING AND MAINTENANCE SEE THE HEALTH AND SAFETY FILE

IT IS ASSUMED THAT ALL WORKS WILL BE CARRIED OUT BY A COMPETENT CONTRACTOR WORKING, WHERE APPROPRIATE, TO AN APPROVED METHOD STATEMENT.

Key

Site boundary

Existing

Buildings

Wall to be considered for alteration

Proposed

Highway construction - Macadam finish

Highway construction - Paved finish to match Victoria road refurbishment

Highway construction - Paved finish to match Victoria road refurbishment

Highway construction - Paved finish to match surrounding streets

Re laid blue cobbles to highway

Blue double cobble soldier course paving banding

Buff 'Blister' tactile paving

PCC kerb line

PCC edge restraint

Anticipated accommodation works along new frontage boundaries and Sympathetically considered treatment of retained gable end to possibly include public art.

Darlington style bollard with retroreflective paneling

Litter bin - to Darlington Borough Council specification

Raised corten planter 3m x 1m x 1m with 0.5m x 0.5m x 0.5m cube seating at each end

Specimen tree planting within soft landscape areas

Hornbeam hedge planting (ready hedge 1.2m high)

Ornamental shrub planting

0.5m high low brick wall with stone cope to match existing. Black 1.5m high railing to top of cope - overall height approx. 2m

Raised corten edge to planting areas - 150mm high

Note:
Proposed parking restrictions (double yellow lines / bus stops) are shown in orange. Proposed carriageway lining is shown in black.

Darlington Station

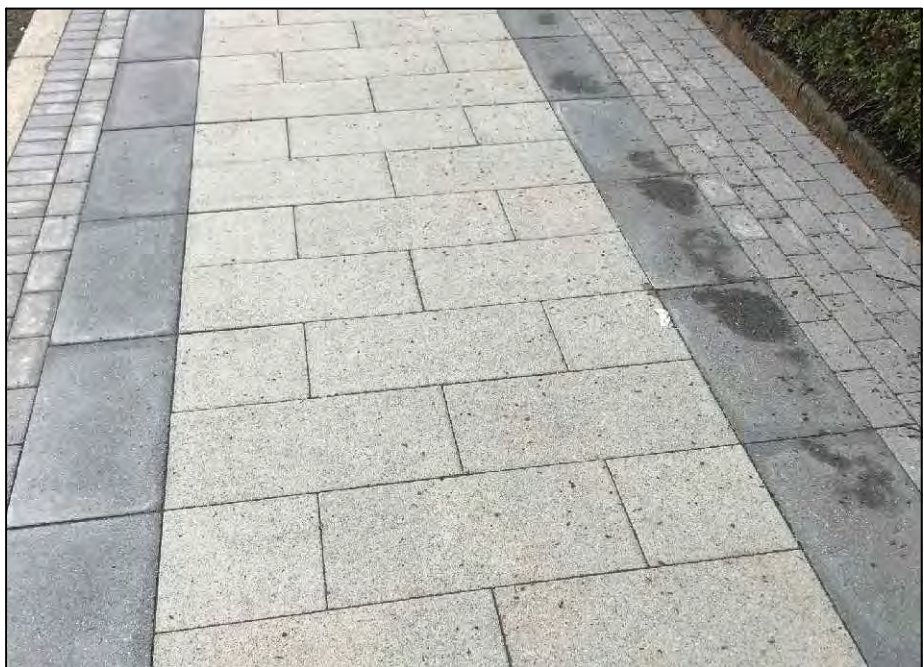
Existing Site Photos



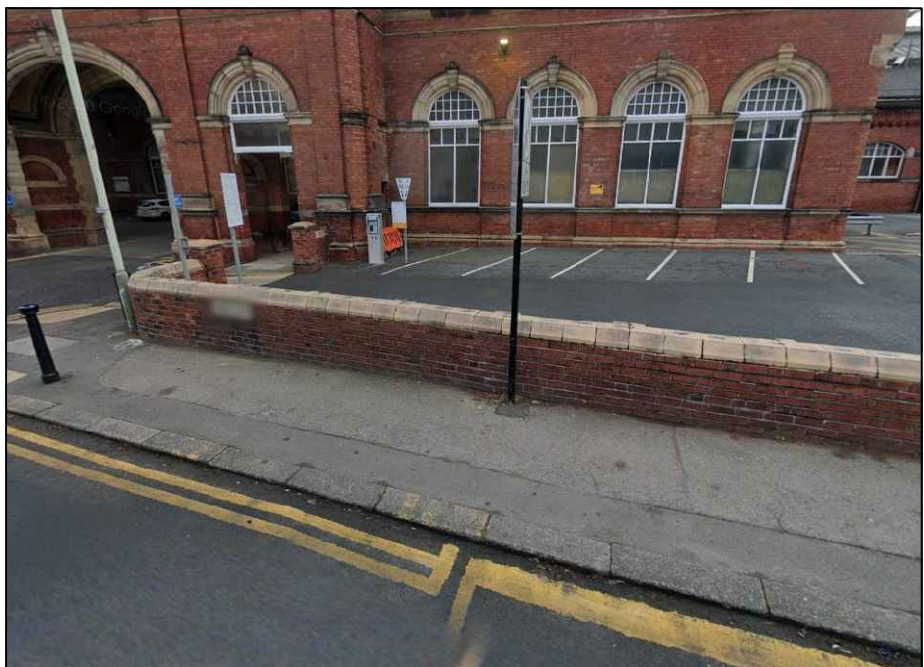
View north along western facade of station.



View towards station from Victoria Road.



New hardworks palette.



Indicative area of boundary wall to be removed to facilitate new vehicular access to existing car park.

Design Precedents



Corten (washed steel) planters provide animation to the public space and protection from the highway edge.



Soft landscape detailing within the raised planters to include species to improve habitat for pollinators and create year round amenity interest.



Raised steel planters incorporate robust seating with concrete cubes abutted to one side.

Rev.	Date	Description	Drawn	Checked	Approved
C	11/06/21	MINOR AMENDMENT TO CROSSING AND BOLLARD LOCATIONS	SDR	SWG	SWG
B	03/06/21	MINOR AMENDMENTS	SDR	SWG	SWG
A	28/07/21	REVISED FOLLOWING CLIENT COMMENTS	SDR	SWG	SWG

Notes:

- Drawing to be read in conjunction with:
 - Site Location Plan drawing 137379/8001
 - Indicative Landscape Sections drawing 137379/8003
 - Proposed Engineering Layout drawing SGMSCP-FHT-20-SL-OR-C-00050
 - Proposed Drainage Details Sheet 1 SGMSCP-FHT-20-SL-OR-C-00051
 - Proposed Drainage Details Sheet 2 SGMSCP-FHT-20-SL-OR-C-00052

Client:



Project Title:

DARLINGTON STATION GATEWAY

Drawing Title:

LANDSCAPE MASTERPLAN



1 Angrove Court, Barwick Road,
Newcastle upon Tyne, NE4 6DB
Tel: 0191 231 0505 Fax: 0844 381 4412

Scale 1:250	Discipline	Author	Checked	Approved
1:250	Planning	SWG	SWG	SWG
Date	Date	Date	Date	Date
03/06/21	04/06/21	04/06/21	04/06/21	04/06/21
Project No.	137397/8002	Revision	C	