

People Group

Secondary Schools Admissions 2026/27

Guide for Parents



DARLINGTON
Borough Council

Welcome

Dear parent

Starting any school for the first time is a huge milestone in a child's life. Moving schools at any age or because you move home means that further important decisions must be made.

This guide gives you information about admissions to secondary school. We hope it will help you to understand the process and find the right school place for your child.

It is important that you visit schools and read about their admission arrangements before you state any preferences. The secondary schools normally hold open evenings during September prior to the year of entry. These dates are published in this guide and on the Council's website.

Every year some schools are oversubscribed. This means that not all requests for places can be met. If a place cannot be offered at one of your preferred schools', this guide provides advice on what you might do. It is therefore important that you read this guide, as well as the prospectuses from individual schools, very carefully. This will tell you about stating preferences and how decisions are made about allocating places. Staff in the Schools Admissions Team, whose contact numbers are given in this guide, will be pleased to provide further information and assistance.

All the schools in Darlington are committed to the success of their pupils academically and across a wide range of activities. Wherever your child secures a school place, I hope she/he will be very happy and successful.

Best Wishes



Councillor Nick Wallis
Member for Children and Young People

Contents

Darlington secondary school open evenings	4
Transition Days	4
Summary timetable	6
How to apply for a secondary school place for September 2026	
Year 6 Children with an Education, Health and Care Plan	7
Applying online	8
Darlington Borough Co-ordinated Admission Scheme	9
Late applications	10
Can I change my preferences?	10
Address Checks	10
Appeal procedures	11
Examples of how equal preference works in Darlington	13
Home to school transport	14
School Details & Admission Policies	
Carmel College	17
Haughton Academy	22
Hummersknott Academy	25
Hurworth School	30
Longfield Academy	37
Polam Hall School	40
St Aidan's C of E Academy	43
Wyvern Academy	40
Atypical Year of Entry Establishments	
UTCs	49
Other Information	
In-year applications and transfers	51
In-Year Fair Access Protocol	51
School holidays	52
How will your child travel to school?	53
Additional Information	
Additional Educational Needs	54
Parent Partnership Service	54
Education Other Than At School	54
People and Families Information Service	54
Raising of the participation age	55
Advice on how to complete the Darlington Secondary School Application Form	
Secondary School Application Form	58
Adjoining Authorities and contact details	
Table- secondary schools in Darlington admission information	61
Table – pattern of secondary school admissions since September 2023	62

Darlington Secondary School Open Evenings

All secondary schools in Darlington have open evening events scheduled, when parents will have the opportunity to visit the schools and in doing so hopefully help in making an informed decision about the preferences they will have to make with their child.

Each school will have a free prospectus with information about that school.

Secondary School	Date	Time
Carmel College	15 September 2025	5.30pm
Polam Hall School	16 September 2025	5.30pm
St Aidan's CoE Academy	17 September 2025	5.30pm
Longfield Academy	18 September 2025	5.30pm
Haughton Academy	22 September 2025	5.30pm
Hummersknott Academy	24 September 2025	6.30pm
Hurworth School	25 September 2025	5.30pm
Wyvern Academy	2 October 2025	6.00pm

The Headteacher will give a short talk at the open evening, this will be followed by an opportunity to tour the school.

Members of staff from the Local Authority's Schools Admissions Team will be present to offer any advice or answer any questions you may have about the application process.

Remember: Attendance at these events has no effect on the offer of a place at a school.

Transition Days

Once a child has been allocated a school place the Local Authority will pass their details onto the receiving school. The secondary school will contact the primary school that the child is attending, and arrangements will be made for a visit to their future school. The transition days for all schools' bar Carmel will take place on 24, 25 & 26 June 2026. Carmel's transition days are 25 and 26 June only.

Parental Responsibility

Throughout the guide those with parental responsibility will be referred to as 'parent'.

In order for the Local Authority to co-ordinate the application process we are required to obtain certain basic information about the child the application is for, i.e. name, date of birth and address. We must also know that the person making the application has the right to do so and therefore we have provided below information on those individuals who have parental responsibility:

- All mothers automatically have Parental Responsibility
- If a child's parents were married at the time of the birth, both parents automatically have Parental Responsibility
- For children born from the 1 December 2003 where the father's name is on the birth certificate the father and mother will both have Parental Responsibility.
- In all other cases, fathers are required to officially obtain Parental Responsibility e.g. through a Parental Responsibility Order or Parental Responsibility Agreement
- Parental Responsibility can be acquired by other family members or friends through a Court Order, such as a Child Arrangements Order (Living With) and Special Guardianship Order
- Parental Responsibility cannot be lost by a parent, except by legal adoption, although it does not guarantee contact.

Summary timetable for admission to secondary schools in Darlington for the school year 2026/2027

The dates relate to the process for Darlington residents. The arrangements will, as far as possible, follow the timetable below.

Date	Action
September 2025	A letter advising parents about the application process is distributed to all Year 6 children resident in Darlington. The LA will send by post, letters to all Year 6 Darlington residents attending schools in other Local Authorities. The guide and application form are available on-line on the Darlington website: www.darlington.gov.uk/Admissions or on request by post.
October 2025	The on-line application form must be completed and submitted prior to midnight on 31 October 2025.
November 2025	The LA liaises with and issues list of applicants and supplementary forms to admission authority schools.
November 2025	The LA liaises with and issues list of applicants to other Local Authorities
January 2026	Exchange of information between admission authorities regarding 'late' applications (e.g. families who have moved into the Authority)
January 2026	Initial allocations are completed.
February 2026	The LA liaises with admission authorities to agree final allocations.
March 2026	1 March is the national offer date. The home LA informs parents of the school their child has been offered a place at.
March 2026	Acceptance/refusal slip must be returned to the Schools' Admissions Team, Town Hall, Darlington, DL1 5QT
May/June 2026	Appeal hearings if necessary
September 2026	Admission to secondary school.
Autumn Term 2026	Closure of waiting lists by the end of the autumn term.

Applying for a secondary school place for September 2026

If you want to give your child the best chance of obtaining a place at the secondary school you prefer, please READ the whole of this guide very carefully. If you are unsure about any of the information you should seek advice from the relevant admissions authority.

<p>General advice</p> <p>REMEMBER: There is no automatic transfer from primary to secondary school – Parents MUST fill in and return the application form at the back of this guide <u>or</u> apply on-line.</p> <p>Children born between 1 September 2014 and 31 August 2015 are of age to transfer. Parents have a right to state a preference but there is no guarantee that a place can be allocated at a preferred school.</p> <p>Parents can name up to three schools that they would like their child to attend. Name the schools in a ranked order – your highest preference is number 1. You can name schools in Darlington and if you wish those in other Local Authorities areas. If naming schools outside Darlington, it is strongly recommended that you obtain the information guide from the relevant authority. You need to find out about their co-ordinated scheme and the details about the schools(s) you are interested in.</p> <p>Consider how your child will get to school, the eligibility criterion for free travel is included in this guide and must be read if stating preferences for schools' that are further distance than the nearest to the home address as your child may not be eligible for travel assistance. It is therefore expected that you will state your nearest school as one of your preferences.</p>	<p>Do you live in the Borough of Darlington?</p> <p>YES – Then you must apply on the Darlington application form. No matter which primary school your child goes to and whatever secondary schools you are interested in, you need to complete the Darlington application form. If you live in Darlington – that means you pay your Council Tax to Darlington Borough Council – you must use the Darlington application form at the back of this guide. Confirmation of receipt of your paper application form will be sent to your child's primary school.</p> <p>Alternatively, you can complete the on-line application form at www.darlington.gov.uk/Admissions you will receive confirmation of your submitted application.</p> <p>NO – If you don't live in Darlington then you must apply on the application form supplied by the Authority you live in, NOT the application form in this guide. However, if you want to apply to a Darlington school, this guide has useful information for you. You need to list Darlington schools on your authority's form.</p> <p>Each council has its own policies and procedures, so ensure you are not late and check with your home authority. Allegations from late applicants stating that their application form has been lost in the post or lost by Darlington LA will not be considered without proof of receipt from you.</p>
---	--

Special Educational Needs

For some children in Yr5 who have an Education, Health and Care Plan (EHCP) they may have discussed their preference of secondary provision as part of their annual review. If this did not occur then it will take place during the autumn term in Yr6, therefore there is no requirement for an application to be made for a child with an EHCP. However, those children who are undergoing a statutory assessment **must** complete the application form, as the process may not be completed before the closing date.

DON'T BE LATE - THE CLOSING DATE FOR RETURNING THE SECONDARY SCHOOL APPLICATION FORM IS 31 OCTOBER 2025

Completing the paper application form

Print out the Secondary School Application Form in this guide and return to School Admissions Team, Education Division, Town Hall, Darlington, DL1 5QT

Remember: Any questions – seek advice from those who know (Schools Admissions Team). Queries to schools will be directed to the Admissions Team. **DON'T BE LATE – CHECK THE CLOSING DATE**

On-Line Applications

The on-line application portal

Darlington Borough Council offers on-line service to parents who are applying for a school place for September 2026. Instead of completing a handwritten form and submitting it, you can complete the on-line application form. This means you will need access to a computer linked to the Internet and a current e-mail address.

Some of the benefits of applying on-line are:

- It's quick and easy to use.
- This service is normally available from home 24 hours a day, seven days a week.
- No risk that the application will get lost in the post.
- The system guides you through the application and alerts you if any errors have been made.
- You will receive confirmation that your application has been received.

Making changes to your on-line application after you have submitted it

If you decide that you would like to make a change to your on-line application after submitting it, you can do so up to the closing date. After the closing date, a request for a change can be made to the Schools' Admissions Team via the portal. For change of address see *Address checks*.

Completing the on-line application form

- Access the internet on your computer in the normal way.
- Type in the Darlington Borough Council website address www.darlington.gov.uk/admissions
- Scroll down to the Education and Learning Section on the homepage and click on School Admissions
- From here click on the link 'Apply Online'. If you **are not** a Darlington resident, **DO NOT** complete the Darlington form. You should contact the council in the area you live. That authority will provide you with details of how to apply on their own form.
- Follow the instructions as detailed throughout the process.
- You will be asked for the same information as on the paper form.
- Please note that if you are submitting additional information, it must be received no later than five school days after the closing date. Please see note 1 below.
- If you apply after the closing date of 31 October 2025, your application will be considered as 'late'.
Please remember to hit the SUBMIT button or your application will not be processed.

Note 1: If you are submitting additional information to support your application e.g. exchange of contracts, please ensure your child's name and date of birth are clearly stated at the top of each page and return before 3 November 2025. The information should be e-mailed to: schools.admissions@darlington.gov.uk or sent by post to: The Schools Admissions Team, Education Division, Darlington Borough Council, Town Hall, Darlington, DL1 5QT.

Note 2: If you are not a Darlington resident and are stating a preference for Carmel College on your home application form and applying under one of the faith categories, a Supplementary Information Form (SIF) is required. You will need to visit the schools' website or contact the school directly to access the form and on completion return to Carmel College directly.

If you would like advice or support completing your on-line application form, please contact the Schools' Admissions Team on (01325) 406333 or e-mail schools.admissions@darlington.gov.uk

What Are Co-ordinated Admissions Arrangements?

Darlington Local Authority Co-ordinated Scheme

All local authorities must formulate and publish on their website (www.darlington.gov.uk) a scheme for the relevant academic years' entry for all publicly funded schools within their area. All admission authorities must participate in co-ordination. Co-ordination establishes a mechanism that ensures that, as far as practical, every child living in a local authority area who has applied in the normal admissions round receives one and only one offer of a school place on the same date. How the process works is explained in this guide. The Local Authority coordinates the admission arrangements for all schools within Darlington Borough. This involves receiving all the application forms on behalf of the Governing Bodies of Academy Schools; then communicating the decision to parents informing them which school place has been allocated.

Expressing your preference of school

The law allows parents to express preferences for the school they wish their child(ren) to attend. When stating a preference(s) parents are entitled to state a reason for doing so. Where a school is popular and oversubscribed, some parents will inevitably be disappointed as priority for admission must be given to those applicants with the strongest claim under the published admissions arrangements (see pg 17-48). The application form provides space for parents to state up to five schools and indicate the reasons for their choice. All preferences and the reasons for them will be considered, however the only criteria used to allocate places are those published in this guide.

After reading the guide carefully, make sure that you fully understand the admission criteria for each admission authority before stating a preference on the application form. Put the schools in a ranked order – your highest preference is number 1. When you list the schools', you want – **DON'T REPEAT THE SAME SCHOOL** – this **will not** increase your chances of a place. Staff in the Schools Admissions Team will be happy to offer advice and guidance. Enquiries should be made to the Schools Admissions Team, Education Division, Town Hall, Darlington, DL1 5QT, or by telephoning (01325) 406333.

Consideration of preferences by Admission Authorities in Darlington

All preferences expressed will be considered on an equal weighted basis by the relevant admissions authorities. If a preference can be met, then there will be only a single offer of a school place, the Local Authority will take order of preference into account as stated by the parent on their application form for which the child is eligible. The single offer of a school place will be made by the Local Authority on behalf of the admission authority of an Academy school. If a place cannot be offered at a "preferred" school (as stated by the parent on their application form); a place will be offered at the nearest alternative school that has places available.

Most children attend the nearest appropriate school from their home address. However, should parents choose to state preferences for schools' further distance away, you **must** consider how your child will get to school especially if that school is over 3 miles as it is likely your child will not be eligible for free travel assistance. If parents do not state the nearest school to the home address as a preference, the Local Authority will base eligibility for free travel, on whether your child would have been offered a place on national offer day had you stated at least one of the nearest schools but not offered a place. Should parents choose not to state a preference for a school local to the home address and the local authority is not able to meet any stated preferences then it may not be possible to offer a place at the local school due to oversubscription.

Before you make your final decision, you should find out information about school(s) you prefer, schools produce a prospectus which can aid in your thinking. The prospectus includes information about the school to help you decide which school is right for your child(ren). You can also find reports about schools on the website of the Office for Standards in Education (Ofsted) at www.reports.ofsted.gov.uk and annual school performance tables can be found at www.gov.uk/school-performance-tables

Applications for other Local Authority schools

Darlington Borough Council will liaise with other local authorities if applications are received for a place in another local authority school. This will also work in reverse. Parents expressing a preference for a school in another local authority must contact the authority concerned to understand the process for applications. Should an offer of a place be made then the 'home' authority will send the offer letter to the parent regardless of which local authority the school is situated in. There will be only a single offer of a school place.

Consideration of late applications

If you believe that there are exceptional/individual circumstances which prevented submission of the secondary application form by the stated deadline, 31 October 2025, e.g. families who have moved into the area after the closing date, or if you are a single parent and have been ill for some time or have been dealing with the death of a close relative, then you must provide clear evidence for Darlington local authority to decide why you were unable to submit an application form by the stated deadline.

Darlington local authority will consider each application on an individual basis subject to verification, if the authority decides that the reason given is unacceptable then the application will be considered after the applications received by the deadline and the decision of Darlington local authority will be final. For the purposes of the co-ordinated scheme, where preferences **must** be passed to other admission authorities by the agreed deadline, the latest these applications will be considered is up to and including 3 November 2025. All other applications will be considered once the process for allocating places has been applied to those applications received by the deadline.

Remember it is the responsibility of the parent to return the application form by 31 October 2025.

Can I change my preferences?

The Local Authority will not allow a change of preference after 31 October 2025 and before 3 November 2025 (for the purposes of the co-ordinated scheme) without a genuine reason for doing so. A change would only be allowed in exceptional circumstances, for example, if you move to another area within Darlington Borough and can provide evidence to support the fact. You must contact the Schools' Admissions Team to make a request and if allowed will need to be finalised in writing with accompanying documentary evidence.

Address Checks

The local authority acting in its capacity as the co-ordinating authority takes address fraud very seriously and will, if not satisfied with evidence requested and provided, determine the address to be used for the purposes of the home address. Address checks on behalf of the admission authority schools in Darlington, will initially use Council Tax as proof of residence for all applicants. Where council tax records are not sufficient, further evidence will be sought which will include mortgage statements, utility bills, a driving licence (this list is not exhaustive).

If the main address has changed temporarily, for example where a parent resides with extended family during a period of sickness or takes up temporary accommodation due to building works/renovation, then the home address remains that at which the parent was resident before the period of temporary residence began. However, if you have sold your property (exchanged contracts) and move into temporary accommodation, you will be required to provide evidence of your situation and a decision will be made based upon the evidence provided.

Where a family intends to move into the Borough or move address from one property to another in Darlington a request for a school place based on a new address cannot be considered until a letter is provided from a licensed conveyancer or solicitor confirming exchange of contracts. For the purposes of the co-ordinated scheme, where preferences must be passed to other admission authorities by the agreed deadline, the latest these applications will be considered is up to and including 3 November 2025.

For families purchasing a 'new build' property, along with a contract the property must be habitable. It is the parents' responsibility to inform the LA immediately of any permanent change of address during the period from receipt of application up to the 6 February 2026; for offer purposes and to ensure that correspondence is sent to the correct address.

What happens if I am unable to gain a place at my preferred school?

There are often more applications for some schools than there are places available, therefore a place cannot be guaranteed at the preferred school. To assist you we have included tables on pages 61/62. They show the number of preference applications received for the last 3 years, the admission number for the schools, along with the number of successful multiple appeals for those schools (multiple appeals are a number of individual appeals for a particular school heard within the same timeframe).

Appeals

If it has not been possible to offer your child a place at your preferred school, you have the right to appeal against the decision of the relevant admission authority, in the case of it being an Academy it is the governing body. However, an appeal cannot be made if an application for a particular school has not been received.

Independent panels hear appeals for all schools in Darlington and parents are given the opportunity to state their case in writing and to attend the hearing in person. Parents can bring along a friend or representative to support them. If you do wish to appeal against the decision not to offer your child a place at one of your preferred schools, you should complete the options form, which is sent with the 'offer of place' letter and return it to the Schools' Admissions Team within 7 working days. Details can then be sent of the independent appeals procedures and a 'Notice of Appeal' form.

If appealing, Notice of Appeal forms should then be completed and returned no later than 31 March 2026 to: the Clerk of Admission Appeal Hearings, Democratic Services Department, Town Hall, Darlington, DL1 5QT. Democratic Services provides an impartial, independent service for the processing and administration of appeals for all schools. They are independent of the school(s) involved and of Children, Families and Learning. Appeals must be heard within 40 school days from the date the appeal must be lodged.

The decision of the appeal is binding on the admission authority and the appellants. To make a new appeal during the same academic year for a school that an appeal has already been heard is at the discretion of the admission authority. For instance, if there has been a significant or material change in the family circumstances; a house move for example. Requests for a new appeal must be made in writing and sent to the relevant admission authority.

Any other changes in circumstances

It is important that you notify the Schools' Admissions Team in writing of any changes in circumstances which would affect the offer of a school place, including a change in preference or an intention to move out of the authority or place your child at an independent school.

Further Information

Applications for overseas children

In most cases children arriving from overseas have the right to attend schools in England. Nationals entering the UK who wish to apply for a state-funded school place should check that they have a right of abode, or the conditions of their visa otherwise permit them to access a state-funded school. For further information/guidance please visit the DfE website at www.gov.uk or use the following link <https://www.gov.uk/guidance/schools-admissions-applications-from-overseas-children>

Applications from families moving into/back to the Borough of Darlington will be considered as part of the co-ordinated processes as outlined in this guide, however timescales for admission processes will still be adhered to. Evidence of the property a family intends to reside at will be requested, evidence can include a mortgage, a rental agreement or deeds for a property.

Children of UK service personnel (UK Armed Forces)

For families of service personnel with a confirmed posting to the Borough of Darlington, or crown servants returning from over-seas to live in the Borough, Darlington LA will allocate a place in advance of the family arriving in the area provided the application is accompanied by an official letter that declares a relocation date and a Unit Postal Address or Quatering Area Address when considering the application against the schools' oversubscription criteria. Darlington Local Authority will not refuse a service child a place because the family does not currently live in the area, or reserve blocks of places for these children. Where a family plans to move into the Borough, the address the family intend to move to will be used if parents provide evidence (see address checks). Timescales for admission processes will still be adhered to.

Measurements

For applications which require a measurement to be undertaken to apply the oversubscription criteria or to determine a tie-break situation, the Local Authority acting on behalf of an admission authority in Darlington, will measure the distance using a geographical information system this ensures consistency for all measurements. The measurement will take the shortest walking route judged to be safe*. However, for some applications the authority recognises that the shortest route may not be a safe* route to walk in its entirety but may be a combination of both the shortest safest* walking route and a road route which will determine the basis of the measurement. Measurements for travel assistance will also be measured utilising the same measuring tool. (*lighting at regular intervals and paved/tarmacked).

Withdrawal of a school place

Places can be withdrawn by admission authorities if the offer has been made in error, a parent has not responded within a reasonable period, or it has been established that the offer was obtained through a fraudulent or an intentionally misleading application.

Equal Preference

What is equal preference?

Equal preference is a framework for all admission procedures. All authorities now use similar equal preference arrangements. The advantage of equal preference is that all your school preferences are considered at the same time.

How does an equal preference system work?

When parents apply for a place, they can list up to three schools on the application form. The school that is named as the highest preference would normally be the one that parents really want.

For example:

1. Carmel College
2. Longfield Academy
3. Haughton Academy

The admission policy for each school stated is applied to the child's application. This will be the same for all other applications submitted for the same school. (At this point it doesn't matter whether the school has been listed as preference 1,2 or 3 – all applications for a particular school are put into order according to the school's oversubscription criteria.

Darlington local authority, as the co-ordinating authority will send a system generated application list to a school that is oversubscribed, in ranked order of the schools' oversubscription criteria. The Governing Body (GB) or a subcommittee of the GB in turn will return the ranked list after confirming applications are correctly ranked and subsequent checks have been made relating to criteria such as faith or pupil premium where applicable. If more than one school can offer a place, then and only then does the order of the preferences get looked at. The places available at each school are filled up to the PAN, according to the generated applications list ranked by criteria.

Oversubscription criteria

All schools must give the highest priority to 'Looked After Children'. Definitions of which are stated below:

- A looked after child is a child who is (a) in the care of a Local Authority, or (b) being provided with accommodation by a Local Authority in the exercise of their Social Services functions (see the definition in Section 22(1) of the Children Act 1989) at the time of making an application to a school.
- A previously looked after child is a child who immediately moved on from that status after becoming subject to an adoption order, a child arrangements order or a special guardianship order including those children who appear to the admission authority to have been in state care outside of England and ceased to be in state care as a result of being adopted.
- An 'adoption order' is an order made under section 46 of the Adoption and Children Act 2002 and Section 12 of the Adoption Act 1976
- A 'child arrangements order' is an order outlining the arrangements as to the person with whom the child will live under section 8 of the Children Act 1989.
- A 'special guardianship order' is an order appointing one or more individuals to be a child's special guardian or guardians as defined under Section 14A of the Children's Act 1989
- A child is regarded as having been in state care outside of England if they were in the care of or were accommodated by a public authority, a religious organisation or any other provider of care whose sole purpose is to benefit society.

Only one school offer will be made – this will be the highest preference of those schools that can offer a place. If all three school places can be offered, your child will be offered the highest ranked preference. Sometimes not all schools can offer a place, should this happen then an alternative school will be offered, this will be the next nearest with available places.

For example (using the schools listed prior)

- | | |
|----------------------|-----|
| 1. Carmel College | Yes |
| 2. Longfield Academy | Yes |
| 3. Haughton Academy | Yes |

In this example an offer will be made of Carmel – the highest available. Any lower ranked places which could have been offered will be offered to someone else.

The national offer date in England is 1 March 2026 (or the next working day if this date falls on a weekend or a bank holiday). Residents of Darlington will have an initial 14 working days to respond to the offer letter to accept/decline the school place offered – 19 March 2026. Parents will receive reminders then after 21 working days from the offer being made, the portal will no longer be available to receive your decisions and thereafter Darlington admission authority schools can then look to withdraw offers. Any offers from the waiting lists will be made every three weeks, this process will start after 1 April 2026.

Applicants' resident outside of Darlington are asked to respond directly to their home local authority if offered a Darlington school. A reminder letter will be sent if no confirmation is received via the local authority.

The Headteacher or any member of staff at a school cannot offer your child a place or guarantee that a place will be available at the school.

Statutory Transport Arrangements

Darlington Borough Council provides travel assistance in line with its statutory duty, making free travel arrangements for children to get to and from school at the start and the end of the school day. The legal requirement for ensuring that a child attends school is that of the parent therefore when stating your preference for a school place it should not be determined by the availability of travel arrangements that are in operation via the school or the Council.

When applying for a place to start in Year 7 you **must** consider how your child will get to school when stating your preferences. If you do not state your nearest school as one of your preferences and your child is offered a preferred school and it is beyond 3 miles, then the Local Authority will base eligibility for travel on whether your child would have been offered a place at your nearest school on national offer day had you stated it as a preference, meaning your child is unlikely to be eligible for free travel.

The Local Authority provides free home to school transport assistance for pupils of compulsory school age resident in Darlington, eligible if the family are in receipt of free school meals or the maximum level of working tax credit, to:

- 1 of their 3 nearest suitable* schools, should a pupil obtain a place at that school and if that school is more than two miles and less than 6 from the parents' home using the shortest walking route judged to be safe**
- The nearest school preferred on grounds of religion or belief and who obtain a place at such a school and where that school is more than two miles but less than 15 from the parents' home using the shortest walking route judged to be safe**

Also eligible:

- To the nearest suitable school, if that school is more than three miles from the parents' home using the shortest walking route judged to be safe**.
- To the nearest suitable school if there is no identified safe** route.
- To a student who cannot be expected to walk to school because of their mobility problems or because of associated health and safety issues related to their SEN or disability.

Notes:

*Suitable school is the nearest available school which offers an efficient full-time programme of education.

** Safe - lit at regular intervals, paved/tarmacked.

The Council is aware that the shortest route may not be a safe route to walk. Therefore, if a child living in a rural ward, is successful in gaining a place their nearest suitable school; where the route measured (see measurements paragraph) by the Local Authority, is paved/tarmacked but not lit in its entirety, then the Local Authority will provide travel assistance. Details of the travel support for compulsory aged students can be found on the Council's website at www.darlington.gov.uk/education-and-learning/school-years/school-travel-and-transport or by contacting the School Travel & Transport Team on: (01325) 406333

Non-Statutory Transport Arrangements

Hurworth, Hummersknott and Carmel schools will be operating school coaches throughout the 2026/2027 academic year where there is a demand to do so but this will be constantly reviewed by these schools. There is no guarantee that transport will continue each academic year, for each school that currently operates a route. Therein parents' who are **not** entitled to 'free' transport may apply for a fare paying place on an existing school coach where there are spaces available by contacting the relevant school. Details on these arrangements will be sent to parents after the allocation of places has been made and acceptance of the offer has been received by the Local Authority. Should these arrangements cease it is a parents' responsibility to get their child to school and your preference for a school should not be determined by the availability of transport.

School Details and Admission Policies

Each school has a published admission number (PAN), this is the number of places available for pupils starting in Year 7. The admission authority will not normally offer more than this number of places. If the number of children seeking a place is less than the admissions number, all children who have applied will be offered a place.

If there are not enough places for all the applicants, then the oversubscription criteria detailed in the admissions policy for that school will be used to decide who is offered a place.

If a child cannot be offered a place at one of their stated preferred schools, their name can be placed on a waiting list if requested. After the initial offers have been made and where places become available (refusals made by parents) further offers will be made every 3 weeks, this process will start after 31 March 2026.

Parents will also be offered the right of appeal (see page 11 for details). When stating a preference, you are entitled to state a reason for doing so. However, the only criteria used to allocate places are those published on page 16-48 in this guide.

Non-Darlington resident Catholic applicants: if your authority's form does not ask you to state whether your child is a baptised Catholic and which parish the baptism took place, please state these two facts in the reasons section of the application form.

Schools in Darlington LA do not select pupils by aptitude and do not therefore allocate places according to a school's specialism, only Carmel College operates feeder schools and Polam Hall School have postcode areas as part of random allocation of places.

It is important that you notify us in writing of any change in circumstances which would affect the offer of a school place, for example an intention to move out of the LA or place your child at an Independent School.

Carmel College

The Headlands, Darlington, DL3 8RW

Telephone Number: 01325 254525

Email Address: admin@carmel.bhcet.org.uk

Principal: Mrs Melanie Kane

Bishop Hogarth Catholic Education Trust is the admissions authority and is responsible for determining the admission policy. The local authority coordinates the admissions process on behalf of the Trust. The administration and operation of the admission policy is delegated by the Trust to the Local Governing Committee.

Published Admission Number

The trust has set the published admission number (PAN) at 180 pupils at the normal point of entry in Y7 for 2026.

Pupils with an Education, Health and Care Plan (see note 1)

The admission of pupils with an Education, Health and Care Plan is dealt with by a separate procedure. Children with an Education, Health and Care Plan that names the school must be admitted. Where this takes place before the allocation of places under these arrangements this will reduce the number of places available to other children.

Oversubscription Criteria

Where there are more applications for places than the number of places available, places will be offered according to the following order of priority.

First priority in each category will be given to children who will have an older sibling attending the school in September 2026.

- Priority 1:** Catholic looked after and previously looked after children (see page 13 definitions & note 2)
- Priority 2:** Catholic children who attend a Catholic feeder primary school (see note 2 & 10)
- Priority 3:** Other Catholic children (see note 2)
- Priority 4:** Other looked after and previously looked after children (see page 13 definitions)
- Priority 5:** Catechumens and members of an Eastern Christian Church (see notes 3 & 4)
- Priority 6:** Other children who attend a Catholic feeder primary school (see note 10 & 11)
- Priority 7:** Children of a member of school staff (see note 8) who has been employed at the school for two or more years at the time at which application for admissions to the school is made.
- Priority 8:** Children of other Christian denominations whose membership is evidenced by a minister or faith leader (see note 5)
- Priority 9:** Children of other faiths whose membership is evidenced by a minister or faith leader (see note 6)
- Priority 10:** Any other children.

Within each of the categories listed above, the following provisions will be applied in the following order.

- (i) Where evidence is provided at the time of application of an exceptional social, medical or pastoral need of the child which can be most appropriately met at this school, the application will be placed at the top of the category in which the application is made. (see note 9)

- (ii) The attendance of a sibling at the school at the time of enrolment will increase the priority of an application within each category so that the application will be placed at the top of the category in which the application is made after children in (i) above. (see note 7)

Application Procedures and Timetable

If you do not provide the information required in section 5 on the Secondary School Application (SSA) form and return it by the closing date, your child will not be placed in the relevant priority group, and this is likely to affect your child's chance of being offered a place.

The information supplied must have been correct at the date of closing for applications. If not provided, evidence may be sought by the governing body following the closing date for applications. All applications which are submitted on time will be considered at the same time. Supporting documentation and for families who are not residents of Darlington who need to complete the SIF; which can be found on the Academy's website; these must be returned directly to Hayley Wooding at Carmel College.

Late Applications

Late applications will be administered in accordance with Darlington local authority's coordinated admissions scheme. Parents are advised to ensure that the application is submitted before the closing date.

Notes and definitions

Note 1: An Education, Health and Care Plan

Is a plan made by the local authority under section 37 of the Children and Families Act 2014, specifying the special educational provision required for a child.

Note 2: Catholic means a member of a Church in full communion with the See of Rome. This includes the Eastern Catholic Churches. This will normally be evidenced by a certificate of baptism in a Catholic Church or a certificate of reception into the full communion of the Catholic Church. For the purposes of this policy, it includes a looked after child living with a family where at least one of the parents is Catholic. For a child to be treated as Catholic, evidence of Catholic baptism or reception into the Church will be required. Those who have difficulty obtaining written evidence of baptism should contact their Parish Priest who, after consulting with the Diocese, will decide how the question of baptism is to be resolved and how written evidence is to be produced in accordance with the law of the Church.

Note 3: Catechumen means a member of the catechumenate of a Catholic Church. For the purposes of admissions this refers to the child on whose behalf the application is being made. This will normally be evidenced by a certificate of reception into the order of catechumens.

Note 4: Eastern Christian Church includes Orthodox Churches and is normally evidenced by a certificate of baptism or reception from the authorities of that Church. Those who have difficulty obtaining written evidence of baptism or reception should contact the Diocese who will decide how the question of baptism or reception is to be resolved and how written evidence is to be produced in accordance with the law of the Church.

Note 5: Children of other Christian denominations means children who belong to other churches and ecclesial communities which, acknowledge God's revelation in Christ, confess the Lord Jesus Christ as God and Saviour according to the Scriptures, and, in obedience to God's will and in the power of the Holy Spirit commit themselves: to seek a deepening of their communion with Christ and with one another in the Church, which is his body; and to fulfil their mission to proclaim the Gospel by common witness and service in the world to the glory of the one God, Father, Son and Holy Spirit. An ecclesial community which on principle has no credal statements in its tradition, is included if it manifests faith in Christ as witnessed to in the Scriptures and is committed to working in the spirit of the above.

All members of Churches Together in England and CYTÛN are deemed to be included in the above definition, as are all other churches and ecclesial communities that are in membership of any local Churches Together Group (by whatever title) on the above basis.

Applicants must provide a baptismal certificate or where child baptism is not practised, a letter confirming their church membership from their minister or faith leader.

Note 6: Children of other faiths means children who are members of a religious community that does not fall within the definition of 'other Christian denominations' at 6 above and which falls within the definition of a religion for the purposes of charity law. The Charities Act 2011 defines religion to include:

- A religion which involves belief in more than one God, and
- A religion which does not involve belief in a God.

Case law has identified certain characteristics which describe the meaning of religion for the purposes of charity law, which are characterised by a belief in a supreme being and an expression of belief in that supreme being through worship. Applicants must provide a letter of support to confirm their faith membership from their minister or faith leader.

Note 7: Sibling includes:

- (i) all natural brothers or sisters, half brothers or sisters, adopted brothers or sisters, stepbrothers or sisters, foster brothers or sisters, whether or not they are living at the same address; and
- (ii) the child of a parent's partner where that child lives for at least part of the week in the same family unit at the same home address as the child who is the subject of the application.

Note 8: A member of staff

Includes all school staff who are under the direct employment of the Directors of Carmel Multi-Academy Trust and who work at Carmel College.

Note 9: Exceptional social, medical or pastoral need

To demonstrate an exceptional social, medical or pastoral need of the child which can be most appropriately met at this school, the admissions authority will require compelling written evidence from an appropriate professional, such as a social worker, doctor or priest.

Note 10: Feeder Primary Schools

The feeder primary schools are:

St Augustine's Primary School, Beechwood Avenue, Darlington, DL3 7HP
Holy Family Primary School, Prior Street, Darlington, DL3 9EN
St Bede's Primary School, Kingsway, Darlington. DL1 3ES
St Teresa's Primary School, Harris Street, Darlington, DL1 4NL
St William's Primary School, Elwick View, Trimdon Village, Co Durham, TS29 6HY
St Mary's Primary School, Birch Road, Barnard Castle, DL12 5NP
St Mary's Primary School, Central Avenue, Newton Aycliffe, DL5 5NP
St Joseph's Primary School, Garburn Place, Newton Aycliffe, DL5 7DE

Note 11: Children who are not Catholic attending a Catholic feeder school.

Home Address

A child's **home address** refers to the address where the child usually lives with a parent and will be the address provided on the Secondary School Application Form (SSA). Where parents have shared responsibility for a child, and the child lives for part of the week with each parent, the home address will be the address given on the SSA, provided that the child resides at that address for any part of the school week.

False evidence

The governing body reserves the right to withdraw the offer of a place or, where a child is already attending the school, the place itself, where it is satisfied that the offer or place was obtained by deception.

Waiting Lists

In addition to their right of appeal, applicants will be offered the opportunity to be placed on a waiting list. This waiting list will be maintained in order of the oversubscription criteria set out in these admission arrangements and not in the order in which applications are received or added to the list. Waiting lists for admission will operate throughout the school year. The waiting list will be held open until the last day of the summer term. Inclusion on the school's waiting list does not mean that a place will eventually become available.

Right of Appeal

Where a parent has been notified that a place is not available for a child, every effort will be made by the local authority to help the parent to find a place in a suitable alternative school. Parents who are refused a place have a statutory right of appeal. Further details of the appeals process are available by writing to the Chair of Governors at the school address.

Tie Breaker

Where there are places available for some, but not all applicants within a particular criterion priority will be given to children living closest to the school determined by the shortest distance. Distance will be measured from the front door of the home address (including flats) to the main school gate, by the shortest walking route. This will be based on the home address of the child. To remain consistent the Authority uses a Geographical Information System to measure all distances. The Authority's priority when measuring a route is to identify the shortest route judged to be safe (safe is lit at regular intervals, paved/tarmacked). The local authority accepts there may be exceptions and will treat each case on its merits.

In the event of distances being the same for two or more children where this would determine the last place to be allocated, random allocation will be carried out in a public place and supervised by a person independent of the school.

Admission of Children outside their Normal Age Group

A request may be made for a child to be admitted outside of their normal age group, for example, if the child is gifted and talented or has experienced problems such as ill health. Any such request should be made in writing to the Headteacher of the school. The admission authority will make its decision about the request based on the circumstances of each case and in the best interests of the child. In addition to taking account the views of the Headteacher who has statutory responsibility for the internal organisation, management and control of the school, the admission authority will take account the views of the parents and of appropriate medical and education professionals.

In-Year Applications

An application can be made for a place for a child at any time outside the admission round and the child will be admitted where there are available places. Applications should be made by contacting the local authority School Admissions Team at the Town Hall. Parents will be advised of the outcome of their application in writing. Where there are places available but more applications than places, the published oversubscription criteria, as set out in the policy, will be applied. If there are no places available, a request can be made that the child is added to the waiting list (see waiting lists – operation of). The parent has the right of appeal to an independent appeal panel.

Fair Access Protocol

The school is committed to taking its fair share of children who are vulnerable and/or hard to place, as set out in locally agreed protocols. Accordingly, outside the normal admission round the governing body is empowered to give absolute priority to a child where admission is requested under any local protocol that has been agreed by both the diocese and the governing body for the current school year.

Carmel College 6th Form

Application Procedures and Timetable

The sixth form is available for all existing students subject to students fulfilling the individual requirements of suitable courses. Remaining places in the sixth form of the College will be offered in accordance with the oversubscription criteria set out below, subject to applicants fulfilling the individual requirements of suitable courses. To apply for a place at this College, the parent/student must complete an application form available from the College. The parent/student will be advised of the outcome of the application by the College.

If the parent is required to provide supplemental evidence to support the application (e.g. a baptismal certificate), this evidence should be provided at the time of application. If not provided, evidence may be sought by the governing body following the closing date for applications. This information must have been correct at the date of closing for applications. All applications which are submitted on time will be considered at the same time and after the closing date for admissions which is 19 December 2025. Applications received after this date will be considered on a rolling basis.

Published Admission Number

The governing body has set its published admission number (PAN) at 250 students to year 12 in the College year which begins in September 2026.

Entry requirements

Both internal and external students wishing to enter the sixth form will be expected to have met the same minimum academic entry requirements for the sixth form. The minimum entry requirement for admission into Year 12 for Level 3 courses is 5 x grade 4 GCSE, or equivalent, plus subject specific requirements as per prospectus.

In addition to the sixth form's minimum academic entry requirements students will need to satisfy minimum entrance requirements to the courses for which they are applying. If either internal or external applicants fail to meet the minimum course requirements, they will be given the option of pursuing any alternative courses for which they do meet the minimum academic requirements. Details of the specific entry requirements and courses available may be obtained from the College. Course requirements are published annually in the College's prospectus and on its website.

When year 12 is under-subscribed all applicants meeting the minimum academic entry requirements will be admitted or permitted to progress.

When there are more external applicants that satisfy any academic entry requirements, priority will be given in accordance with the oversubscription criteria set out below. Where there is a space in year 13 i.e. where there are fewer than 250 students in the year group, the College will admit additional students up to this number using the oversubscription criteria set out below.

Oversubscription Criteria (for external applicants)

Where there are more applications for places than the number of places available, places will be offered according to the following order of priority.

1. Catholic looked after and previously looked after students (see notes 2&3 of Carmel Academy policy)
2. Other Catholic students (see note 3 of Carmel Academy policy)
3. Other looked after and previously looked after students (see note 2 of Carmel Academy policy)
4. Catechumens and members of an Eastern Christian Church. (see notes 4&5 of Carmel Academy policy)
5. Students of other Christian denominations whose membership is evidenced by a minister or faith leader. (see note 6 of Carmel Academy policy)
6. Students of other faiths whose membership is evidenced by a minister or faith leader. (see note 7 of Carmel Academy policy)
7. Any other students

Haughton Academy

Salters Lane North, Darlington, DL1 2AN
Telephone Number: 01325 254000
Email Address: admin@haughtonacademy.org.uk
Principal: Mrs Jane Darbyshire

The Board of directors of The Education Village Academy Trust (EVAT) is the Admissions Authority for this school.

Published Admission number

The admission number for Haughton Academy at the normal point of entry in Yr7 is 180 pupils.

Admission Arrangements

Applications for places at the Academy will be made in accordance with the coordinated admission arrangements for Darlington Local Authority and will be made on the Secondary School Application form provided and administered by the Local Authority.

Consideration of applications

Where fewer applications than the admission number are received, the Academy will offer places to all those who have applied. Where the number of applications for admission is greater than the published admissions number, applications will be considered against the oversubscription criteria set out below. After the admission of students with an Education, Health & Care Plan (EHCP) where the Academy is named on the plan, the criteria will be applied in the order in which they are set out below:

Priority 1: Public Care (see page 13 for definitions)

Priority 2: Sibling Links (see note 1)

Priority 3: Distance (see note 2)

Priority 4: Medical Reasons (see note 3)

Notes and Definitions

Note 1: Sibling Links

Children who have a brother or sister already attending Haughton Academy and who are expected to be on roll at the time of admission. Definition of 'sibling' (brothers or sisters) are those children who live at the same address and either:

- have one or both natural parents in common;
- are related by a parent's marriage,
- are adopted or fostered, or;
- their parents are married/co-habiting and children live together in the same household;
- they are children of the same household

Note 2: Distance

Children who live nearest the Academy measured from the front door of the home address to the main school gate, by the shortest walking route judged to be safe (lighting at regular intervals and paved/tarmacked). This will be based on the child's permanent home address

Note 3: Children with medical factors directly relating to admission

If you state a preference for Haughton Academy and indicate your reason for doing so is 'medical', then you are required to send a supporting letter from a professional practitioner. The supporting evidence should set out the reasons why the Academy is the most suitable school and the difficulties it would cause if your child had to travel to another school. Permission from parents must be given to share this information.

Home Address

The home address is used for applying the admissions criteria. This means that when you state your school preferences you must give the home address of the child at the time of application, where they mainly reside Monday to Friday. You must not give the address of childminders or other family members who may share in the care of your child.

For parents who may have more than one property, reference should only be made to the property in which they and the child(ren) mainly reside. If the main address has changed temporarily, for example where a parent resides with extended family during a period of sickness or takes up temporary accommodation due to building works/renovation, then the home address remains that at which the parent was resident before the period of temporary residence began. However, if you have sold your property (exchanged contracts) and have moved into temporary accommodation, you will be required to provide evidence of your situation and a decision will be made based upon the evidence provided.

Where there are shared care arrangements, the home address will be where the child lives for the majority of the week Monday to Friday or where a court has determined their home address should be.

Measurements

For applications which require a measurement to be undertaken to apply the oversubscription criteria or to determine a tie-break situation, the Local Authority on behalf of the Academy will measure the distance using a Geographical Information System (GIS) this ensures consistency for all measurements.

Tie Break

In the event of a tie-break in any oversubscription criteria, distance will be the deciding factor, which may involve an officer walking the route using a pedometer.

Multiple Births

For multiple births where only 1 place remains at Haughton Academy, then the Academy will use its discretion in deciding whether to offer a place(s) that will exceed its admissions number.

Waiting lists

Subject to any provisions regarding waiting lists in the LA's co-ordinated admission scheme, the Academy will operate a waiting list. Where in any year the Academy receives more applications for places than there are places available, a waiting list will operate until a month after the admission date. This will be maintained by the Academy and it will be open to any parent to ask for his or her child's name to be placed on the waiting list, following an unsuccessful application.

The position of children on the waiting list will be determined solely in accordance with the oversubscription criteria set out in this policy. When a vacancy occurs, places they will be allocated to children on the waiting list in accordance with the oversubscription criteria.

Arrangements for appeals panels

Parents will have the right of appeal to an Independent Appeal Panel if they are dissatisfied with an admission decision of the Academy. The Appeal Panel will be independent of the Academy. Contact the school admissions team for details on how to appeal – Tel 01325 406333.

In-Year Applications

Families who move into the area who require a place(s) at the Academy must contact Schools Admissions at the Town Hall. Parents will be sent an In-year Application Form (IYAF) and directed to the Council's website for a copy of the Guide for Parents. Should a place be available at the school a meeting with the Principal or her representative will take place before a start date is agreed. Should however a parent request a place and there is none available, then they will be informed about the appeals process and the availability of alternative school places.

Anyone wishing to contact the Academy regarding its admission arrangements should contact Mr Liam Taylor, Telephone (01325) 254000.

Admission of Children outside their Normal Age Group

A request may be made for a child to be admitted outside of their normal age group, for example, if the child is gifted and talented or has experienced problems such as ill health. Any such request should be made in writing to the Headteacher of the Academy. The governing body will make its decision about the request based on the circumstances of each case and in the best interests of the child. In addition to taking account the views of the Headteacher who has statutory responsibility for the internal organisation, management and control of the school, the governing body will take account the views of the parents and of appropriate medical and education professionals. Applications will be considered at any time but those wishing to apply for a place at the normal point of entry should do so before the national closing date of 31 October in the year prior to the year of admission.

Hummersknott Academy

Edinburgh Drive, Darlington, DL3 8AR

Telephone Number: 01325 241191

Email Address: enquiries@hummersknott.org.uk

Head of School: Mr Grant Sowerby

Advance Learning Partnership is the Admissions Authority for this school.

Admission Arrangements

Applications for places at Hummersknott Academy are made on the Secondary School Application (SSA) form in accordance with the Local Authority's co-ordinated admission arrangements.

Published Admissions Number (PAN)

The published admission number at the normal point of entry in Yr7 is 240.

Oversubscription Criteria

After the admission of children with an Education Health and Care Plan where Hummersknott Academy is named on the plan, and where the number of applicants is greater than the Published Admission Number (PAN), applications will be considered against the criteria set out below, in the following order:

- Priority 1: Looked After, Previously Looked After and Internationally Adopted Previously Looked After Children** (see page 13 for definitions)
- Priority 2: Medical Reasons** (see note 1)
- Priority 3: Family Links** (see note 2)
- Priority 4: Children of Staff** (see note 3)
- Priority 5: Associated Areas** (see note 4)
- Priority 6: Distance** (see note 5)

Notes and Definitions

Note 1: Medical Criterion

If stating a preference for Hummersknott Academy and indicating the reason is 'medical', then parents will be required to send a supporting letter from a professional health care practitioner. The supporting evidence should set out the reasons why Hummersknott Academy is the most suitable choice and why other schools could not provide the appropriate support for the child. The Governing Body may seek the opinion of a specialist where the information submitted from the health care practitioner does not contain enough information to determine how the condition can affect a child and their admission to school. In such cases permission will be sought from the child's parents to do so.

Note 2: Family Links

Children who have a brother or sister already attending Hummersknott Academy and who are expected to be on roll at the time of admission.

- They are half-brother or full brother or sister.
- They are adoptive brother or sister.
- Their carers' are co-habiting and children live together in the same household.

Note 3: Children of staff

Children of staff members who have worked at Hummersknott Academy for at least two years at the time at which application for admissions to the school is made.

Note 4: Associated Areas for Hummersknott Academy are:

The following areas have been deemed by the Academy's Governing Body to be Associated Areas for over-subscription criteria to Hummersknott Academy.

- Children living within Heighington and Coniscliffe in the Borough of Darlington as identified on the map (page 28).
- Children living in the area to the south of Parkside within the Ward of Park East in the Borough of Darlington as identified in the area hatched on the map. Also, areas identified by the parish boundaries identified on the map (page 29).

The maps are also available on both the Council's and Hummersknott Academy's websites.

Note 5: Distance

Children who live nearest the Academy measured from the front door of the home address (including flats) to the main school gate by the shortest walking route judged to be safe (lit at regular intervals and paved/tarmacked). This will be based on the child's permanent home address (to remain consistent the Authority uses a Geographical Information System to measure all distances).

Tie Break

In the event of a tie-break in any oversubscription criteria, distance will be the deciding factor, which may involve an officer walking the route using a pedometer.

School Transport Arrangements

Details on transport arrangements for which the Local Authority are responsible are available on pg 15.

Home Address

This is the child's permanent address where he or she generally resides. For parents who may have more than one property, reference should only be made to the property in which they and the child(ren) mainly reside. Where shared care arrangements are in place, the home address shall be as directed by the court or the address where the child lives for the majority of the school week.

If the main address has changed temporarily, for example where a parent resides with extended family during a period of sickness or takes up temporary accommodation due to building works/renovation, then the home address remains that at which the parent was resident before the period of temporary residence began. Where the temporary change of address is due to the sale of property, evidence of the circumstances will be required to determine the home address for the purposes of the application. Any permanent change of address during the period from making an application to the offer being made, must be notified to the Local Authority immediately, as this may affect the admission offer made.

In the event of a change of address affecting the application for your child to attend Hummersknott Academy, the Academy will request a letter from a licensed conveyancer or a solicitor's letter confirming exchange of contracts.

Measurements

For applications which require a measurement to be undertaken to apply the oversubscription criteria or to determine a tie-break situation, the Local Authority on behalf of the Academy will measure the distance using a Geographical Information System (GIS) this ensures consistency for all measurements.

Multiple Births

Where a single place remains and the next child to be offered is a twin or other multiple births, then Hummersknott Academy will use its discretion in deciding whether to offer over the PAN.

Operation of a waiting list

The Local Authority will maintain a waiting list for Year 7 pupils only until the end of the autumn term of the academic year of admission and it will be open to any parents to ask for his or her child's name to be placed on the waiting list, following an unsuccessful application. The position of children on the waiting list will be determined solely in accordance with the oversubscription criteria. Where places become available, they will be allocated to children on the waiting list in accordance with the oversubscription criterion.

Arrangements for Appeals

Parents will have the right to appear before an Independent Appeal Panel if they are dissatisfied with an admission decision of the Local Authority made on behalf of Hummersknott Academy. The appeal panel will be independent of the Academy. The arrangements for appeals will be made by the Local Authority in line with the School Admission Appeals Code published by the Department for Education. The determination of the appeal panel will be made in accordance with the School Admission Appeals Code and is binding on all parties. Parents who are refused a place for their child have a statutory right of appeal. Further details of the appeals process are available by writing to the Chair of Governors at the Academy address.

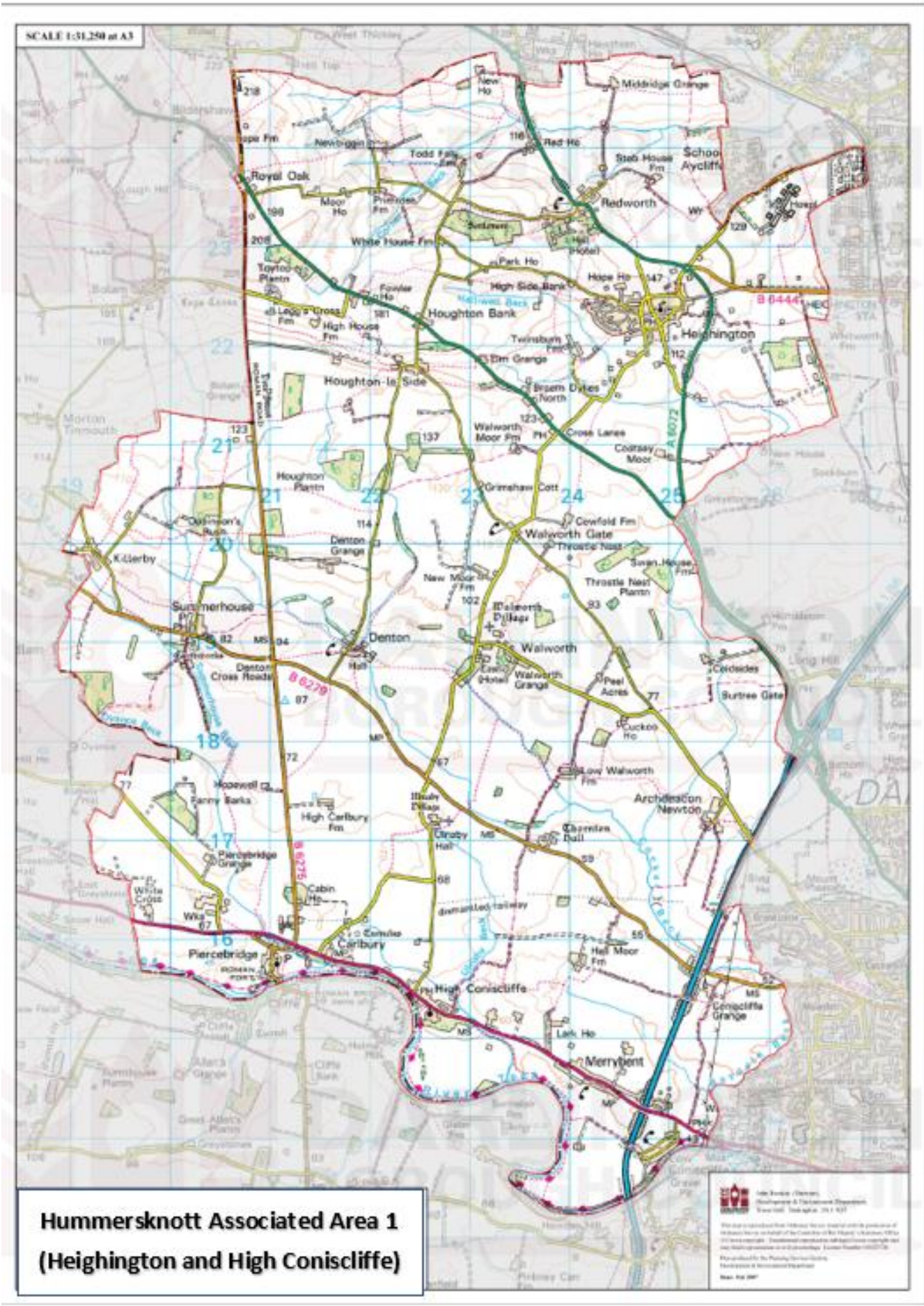
Admission of children outside their normal age group

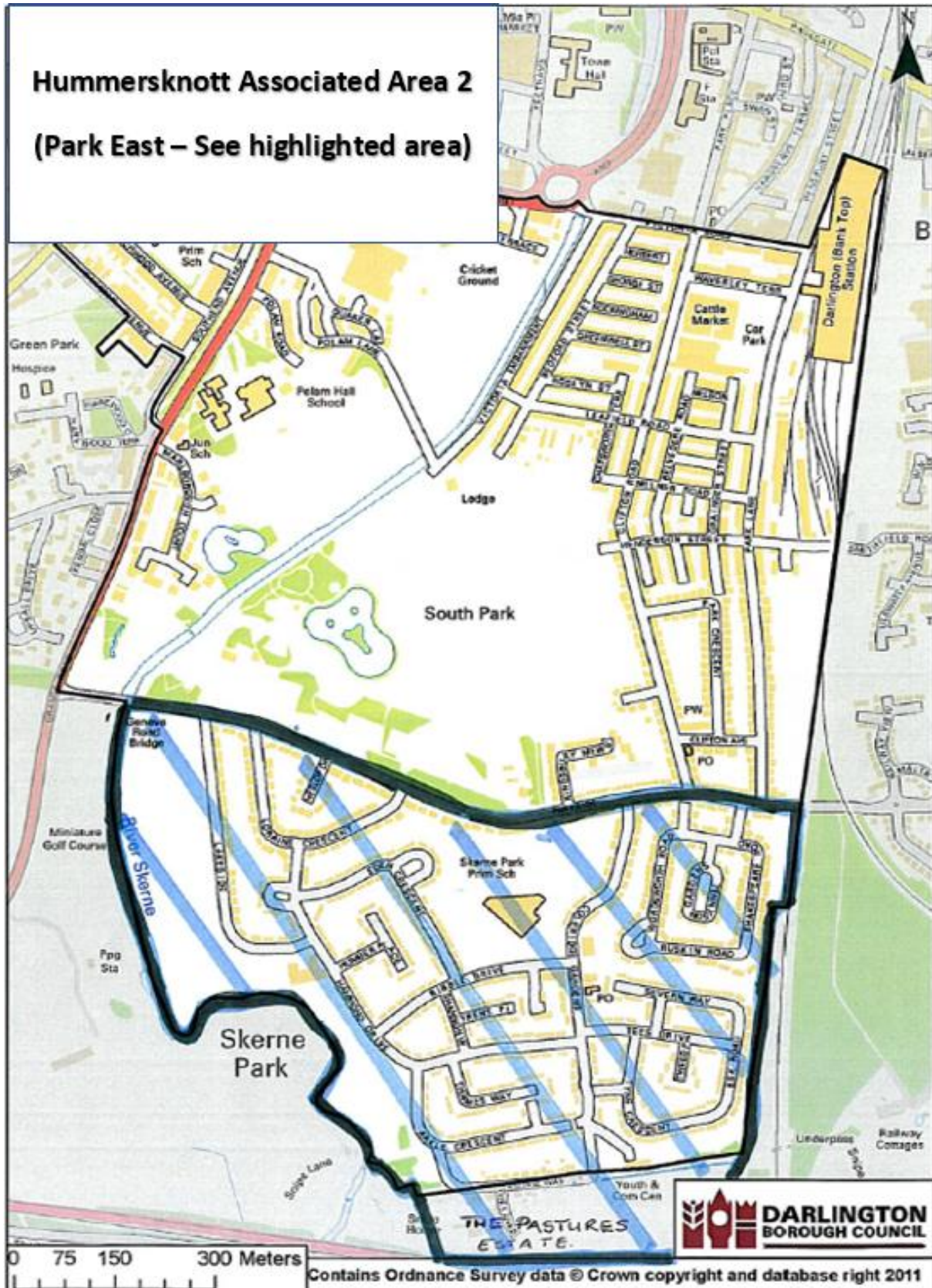
Parents may request that their child is admitted outside their normal age group. When such a request is made, the Academy will make a decision on the basis of the circumstances of the case and in the best interests of the child concerned, taking into account the views of the Head of School and any supporting evidence provided by the parent, bearing in mind the age group the child has been educated in up to that point. The process for requesting such an admission is to apply to the Academy in writing giving a clear explanation of why the request is being made. Once a decision has been made the Admission Authority will write to the parent(s) informing them of the decision and setting out reasons for such. Parents have a statutory right to appeal against the refusal of a place but this does not apply if the authority can offer a place but it is not in the year group that has been requested.

In-Year admissions

Families who move into the area who are seeking a place outside of the normal point of entry arrangements must contact the Schools Admissions Team at the Town Hall. Should a place be available at the school a meeting with the school will take place before a start date is agreed, this will be arranged via the school. Should a parent request be refused, then they will be informed about the appeals process.

Anyone wishing to contact the Academy regarding its admission arrangements should contact Joanne Parnaby, Officer Manager.





Hurworth School

Croft Road, Hurworth-on-Tees, Darlington, DL2 2JG

Telephone Number: 01325 720424

Email Address: enquiries@hurworth.nalp.org.uk

Head of School: Mrs Rachel Somerville

Northern Arch Learning Partnership (NALP) is the Admissions Authority for this school

Published Admissions Number

The published admission number at the normal point of entry, Yr7, is 127.

Admission Arrangements

Applications for places at the Academy will be made in accordance with the coordinated admission arrangements for Darlington Local Authority and will be made on the Secondary School Application form provided and administered by the Local Authority.

Oversubscription Criteria

After the admission of children with an Education Health and Care Plan where Hurworth School is named on the plan, and where the number of applicants is greater than the published admission number, applications will be considered against the criteria set out below in the order:

- Priority 1: Looked After, Previously Looked After Children & Internationally Adopted Previously Looked After Children** (see page 13 for definitions)
- Priority 2: Children of a Member of School Staff** (see note 1)
- Priority 3: Family Links** (see note 2)
- Priority 4: Medical Reasons** (see note 3)
- Priority 5: Children living in Hurworth & Hurworth Place** (see map)
- Priority 6: Associated Areas** (see note 5 and maps)
- Priority 7: Distance** (see note 6)

Notes and Definitions

Note 1: Children of a member of school staff

A member of staff includes all school staff who are under the direct employment of the Directors of Swift Academies and who work at Hurworth School.

Note 2: Family Links

Children who have a brother or sister already attending Hurworth School and who are expected to be on roll at the time of admission. Children have a family link if:

- They are half-brother of full brother or sister.
- They are adoptive brother or sister.
- They are a foster brother or sister
- Their carers are married/co-habiting and children live together in the same household.
- They are children in the same household (e.g. carers have Special Guardianship/Child Arrangements order)

Note 3: Medical Criterion

Children with exceptional medical factors directly relating to school placement. Applications under this criterion should be supported by written evidence from a professional practitioner. If you state a preference for Hurworth School and indicate your reason for doing so is 'medical', then you are required to send a supporting letter from a professional practitioner. The supporting evidence should set out the particular reasons why the school in question is the most suitable school and the difficulties it would cause if your child had to travel to another school. Permission from parents must be given to share this information.

Note 4: Associated Areas

Children who live within the following areas: The villages of Middleton St George, Middleton One Row, Neasham, Bishopton, Sadberge, Great Stainton, Little Stainton and the rural areas of Sockburn, Low Dinsdale and Hurworth Moor (as defined on maps A, B & C)

Note 5: Distance

Children who live nearest the preferred school measured from the front door of the home address (including flats) to the main school gate (see measurements).

Home Address

The home address is used for applying the admissions criteria. This means that when you state your school preferences you must give the home address of the child at the time of application, where they mainly reside Monday to Friday. You must not give the address of childminders or other family members who may share in the care of your child. For parents who may have more than one property, reference should only be made to the property in which they and the child(ren) mainly reside. If the main address has changed temporarily, for example where a parent resides with extended family during a period of sickness or takes up temporary accommodation due to building works/renovation, then the home address remains that at which the parent was resident before the period of temporary residence began.

However, if you have sold your property (exchanged contracts) and have moved into temporary accommodation, you will be required to provide evidence of your situation and a decision will be made based upon the evidence provided. Where there are shared care arrangements, the home address will be where the child lives for the majority of the week Monday to Friday or where a court has determined their home address should be.

Measurements

For applications which require a measurement to be undertaken in order to apply the oversubscription criteria or to determine a tie-break situation, the Local Authority on behalf of the Academy will measure the distance using a Geographical Information System (GIS) this ensures consistency for all measurements. The measurement will take the shortest walking route judged to be safe*. However, for some applications the authority recognises that the shortest route may not be a safe* route to walk in its entirety but may be a combination of both the shortest safest* walking route and a road route which will determine the basis of the measurement (*lighting at regular intervals and paved/tarmacked).

Late Applications

Late applications will be administered in accordance with the home local authority coordinated admissions scheme.

Tie Break

In the event of more applications in any oversubscription criteria where the PAN will be reached, distance will be the deciding factor, which may involve an officer walking the route using a pedometer (see measurements).

False Information

The governing body reserves the right to withdraw the offer of a school place, or where a child is already attending the school, the place itself in the first term of attending where it is satisfied that the offer or place was obtained fraudulently.

Multiple Births

Where a single place remains and the next child to be offered is a twin or other multiple birth, then the school will use its discretion in deciding whether to offer over the PAN.

School Transport Arrangements

Details on transport arrangements for which the Local Authority are responsible are available on pg 15. Transport to Hurworth School will only be provided to this Academy by the Local Authority if:

- Hurworth is the nearest appropriate and/or suitable school and is more than three miles from the parents' home.
- Hurworth School is the nearest appropriate and/or suitable school and there is no identified safe route.

If your rural area is not mentioned in the list, please refer to the maps found on the school admissions website or contact the school for further clarification.

Waiting Lists

If your child has been refused admission, a waiting list will be held by the Local Authority. Priority will be given according to the oversubscription criteria stated for this school based on the information provided at the time of application. The waiting list will be open until the end of the Autumn term 2026.

Right of Appeal

Where a parent has been notified that a place is not available for a child, every effort will be made by the Local Authority to help the parent to find a place in a suitable alternative school. Parents who are refused a place have a statutory right of appeal. Further details of the appeals process are available by contacting the school direct on 01325 720424.

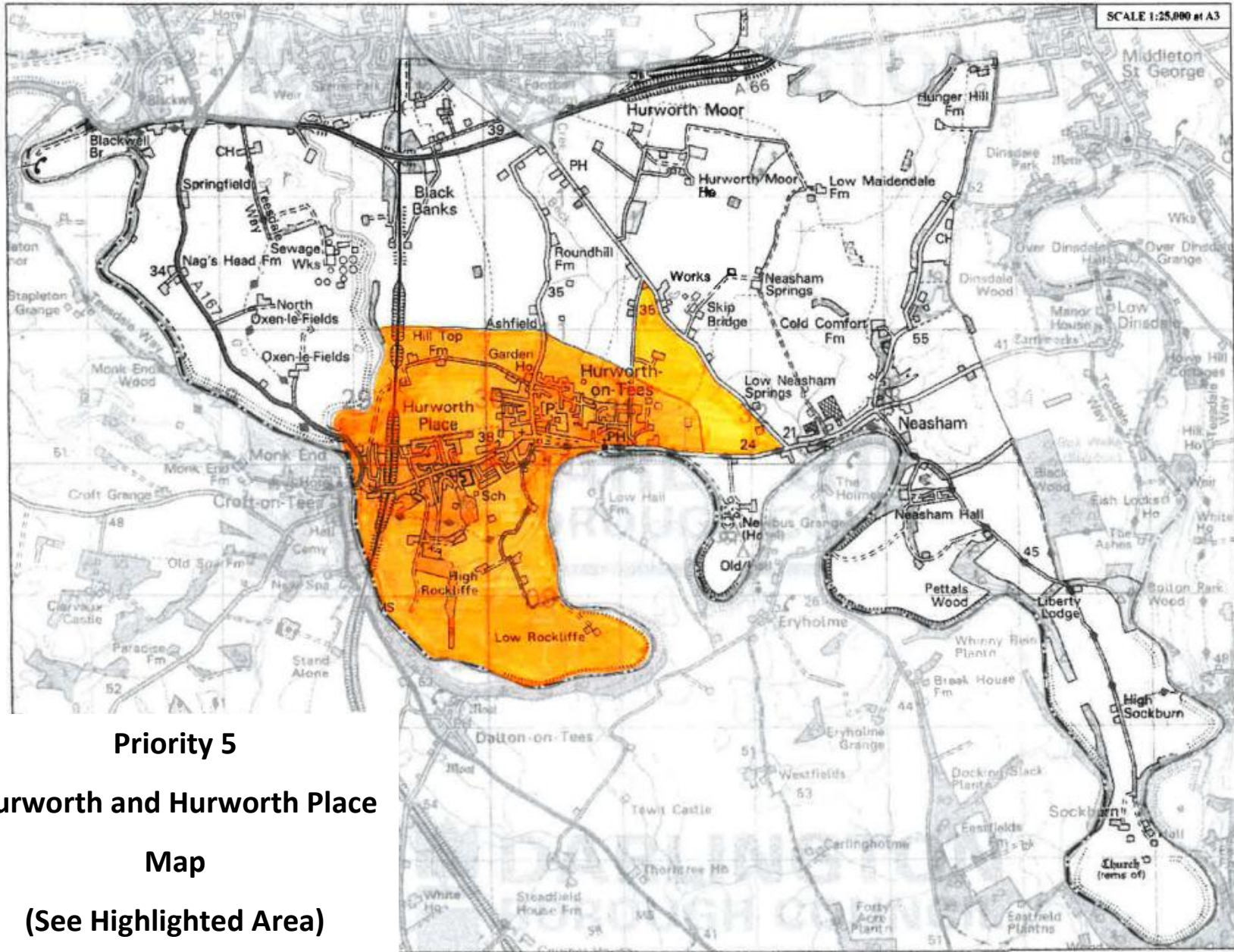
Admission of children outside their normal age group

Admission authorities must make decisions based on the circumstances of each case and in the best interests of the child concerned. This will include taking account the parent's views; information about the child's academic, social and emotional development; where relevant, their medical history and the views of a medical professional; whether they have previously been educated out of their normal age group and whether they may naturally fall into a lower age group if it were not for being born prematurely, they must also take into account the views of the Head Teacher of the school concerned. When informing a parent of their decision on the year group the child should be admitted to, the admission authority must set out clearly the reasons for their decision.

If a parent seeks a place in a year group other than the year that their child would 'normally' be in (outside of their chronological age), they need to put their request in writing with a clear explanation of why they are making their request, for example their child is gifted and talented, they have missed a significant part of their education due to a medical problem. If a parent seeks a place for their child to start Year 7 when they are in a year group outside of their chronological age and it is within the co-ordinated timeframe for applying (beginning of September to 31st October) then this will be considered as part of the normal admissions round. Any application will be forwarded to the Head Teacher, Hurworth School and will be considered by the Admissions Sub-Committee. Once a decision has been made the Admission Authority will write to the parent(s) informing them of the decision and setting out reasons for such, if parents do not agree with the decision, they have a statutory right to appeal against the refusal of a place at the school. This does not apply if they are offered a place at the school but it is not in their preferred age group. In this instance parents must complete an In-Year Application Form.

In-Year Applications

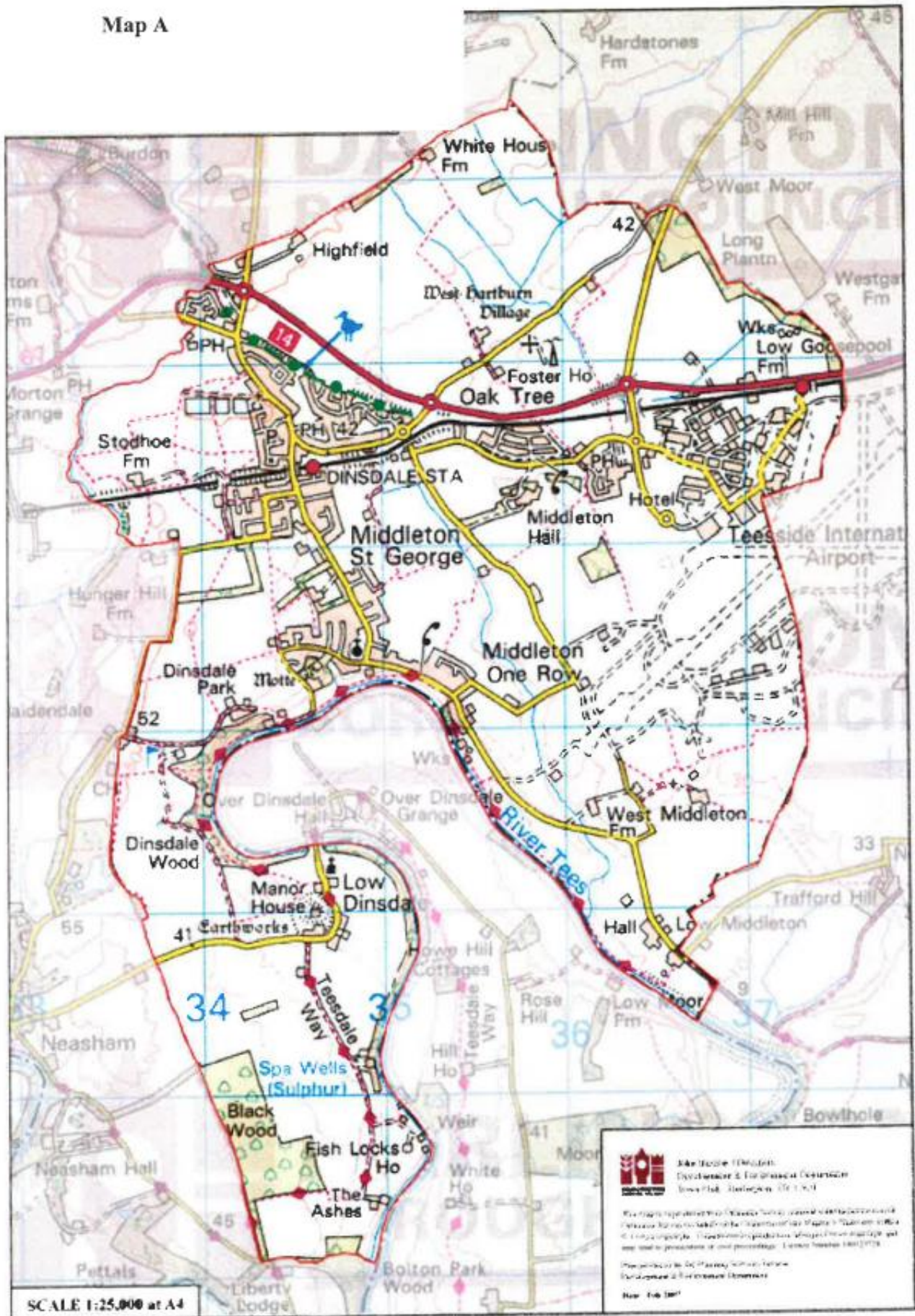
An application can be made for a place for a child at any time outside of the normal admissions round and the child will be admitted where there are available places and/or in conjunction with the Local Authority Fair Access Protocol. Applications should be made by contacting the Local Authority Schools Admissions Team on 01325 406333. Where there are places available but there are more applications than places, the published oversubscription criteria, as set out in this policy, will be applied. If there are no places available, a parent has a right to appeal.

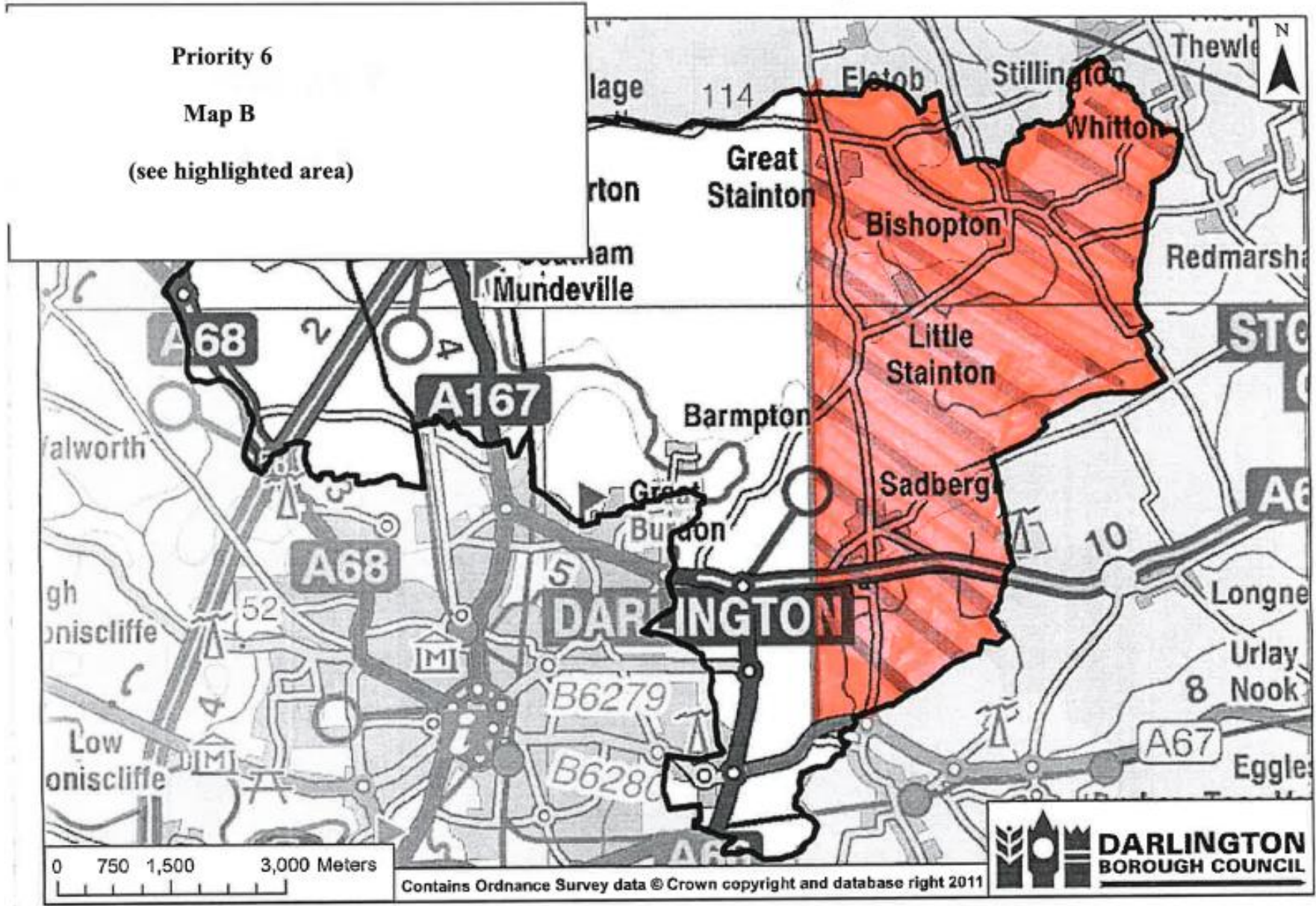


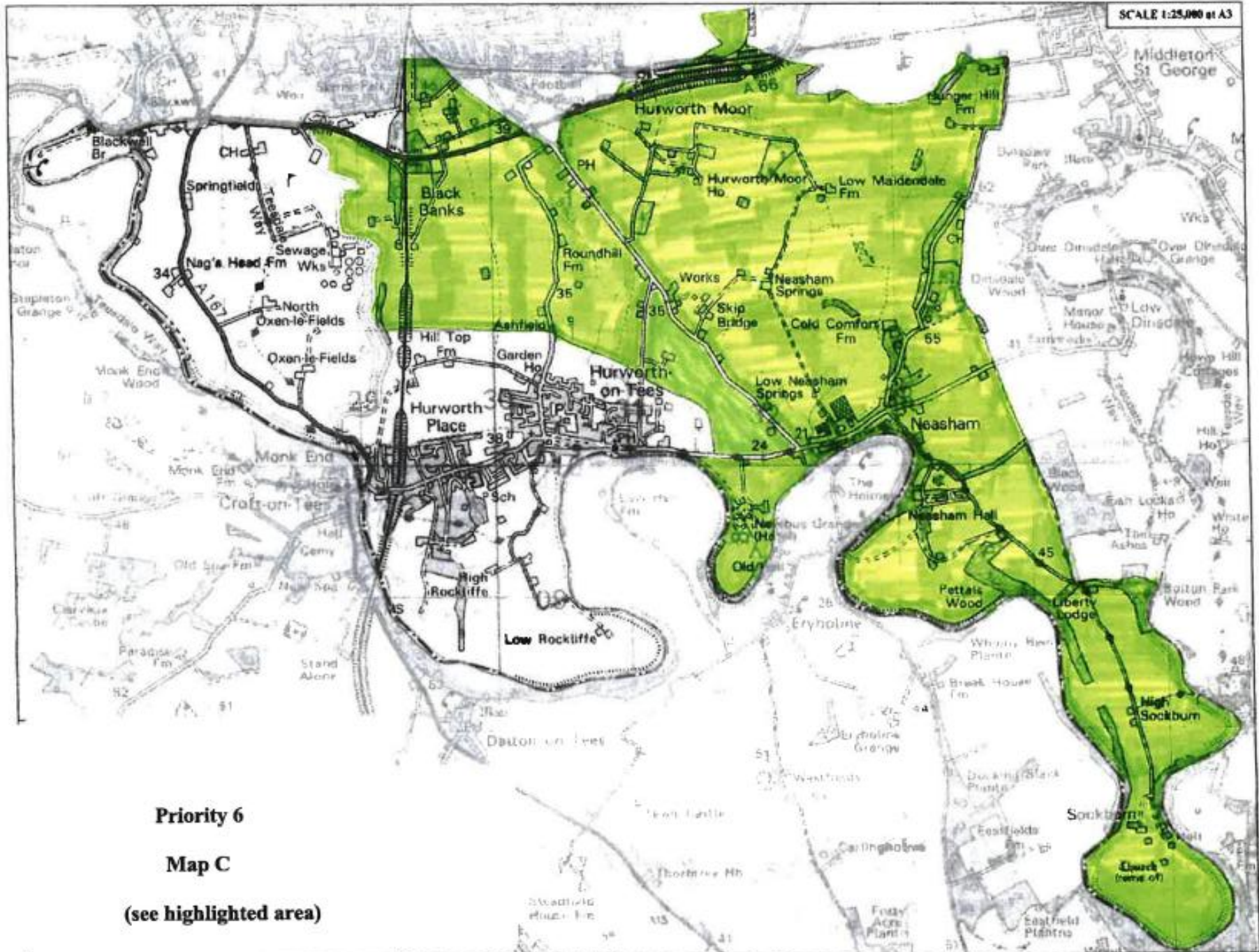
Priority 5
Hurworth and Hurworth Place
Map
(See Highlighted Area)

Priority 6

Map A







Priority 6

Map C

(see highlighted area)

Longfield Academy

Longfield Road, Darlington, DL3 0HT

Telephone Number: 01325 380816

Email Address: enquiries@longfield.nalp.org.uk

Head of School: Mrs Angela Sweeten

Northern Arch Learning Partnership (NALP) is the Admissions Authority for this school

Published Admissions Number

The published admission number at the normal point of entry, Yr7, is 180

Admission Arrangements

Applications for places at the Academy will be made in accordance with the coordinated admission arrangements for Darlington Local Authority and will be made on the Secondary School Application form provided and administered by the Local Authority.

Oversubscription Criteria

After the admission of children with an Education, Health and Care Plan where Longfield Academy is named on the plan, and where the number of applicants is greater than the published admission number, applications will be considered against the criteria set out below in the following order:

Priority 1: Looked After & Previously Looked After Children (see page 13 for definitions)

Priority 2: Medical Reasons (see note 1)

Priority 3: Transport Links (see note 2)

Priority 4: Family Links (see note 3)

Priority 5: Distance

Notes and Definitions

Note 1: Medical Criterion

Children with exceptional medical factors directly relating to school placement. Applications under this criterion should be supported by written evidence from a professional practitioner. If you state a preference for Longfield Academy and indicate your reason for doing so is 'medical', then you are required to send a supporting letter from a professional practitioner. The supporting evidence should set out the particular reasons why the school in question is the most suitable school and the difficulties it would cause if your child had to travel to another school. Permission from parents must be given to share this information.

Note 2: Transport Links

Children for whom Longfield is the nearest appropriate school and the route is unsafe (not lit and paved at regular intervals and/or the road along the route although safe has the national speed limit for a single carriageway) or is the nearest appropriate school and is over 3 miles (measured by the shortest walking route where applicable).

Note 3: Family Links

Children who have a brother or sister already attending Longfield Academy and who are expected to be on roll at the time of admission.

- They are half or full brother or sister.
- They are adoptive brother or sister.
- They are a foster brother or sister;
- Their carers are co-habiting and children live together in the same household.

- They are children of the same household (e.g. carers have special guardianship/child arrangements order).

Note 5: Distance

Children who live nearest to Longfield Academy measured from the front door of the home address (including flats) to the main school gate, by the shortest walking route judged to be safe (lighting at regular intervals and paved/tarmacked). This will be based on the child's permanent home address (see definition of home address).

Home Address

The home address is used for applying the admissions criteria. This means that when you state your school preferences you must give the home address of the child at the time of application, where they mainly reside Monday to Friday. You must not give the address of childminders or other family members who may share in the care of your child. For parents who may have more than one property, reference should only be made to the property in which they and the child(ren) mainly reside. If the main address has changed temporarily, for example where a parent resides with extended family during a period of sickness or takes up temporary accommodation due to building works/renovation, then the home address remains that at which the parent was resident before the period of temporary residence began.

However, if you have sold your property (exchanged contracts) and have moved into temporary accommodation, you will be required to provide evidence of your situation and a decision will be made based upon the evidence provided. Where there are shared care arrangements, the home address will be where the child lives for the majority of the week Monday to Friday or where a court has determined their home address should be.

Measurements

For applications which require a measurement to be undertaken to apply the oversubscription criteria or to determine a tie-break situation, the Local Authority on behalf of the Academy will measure the distance using a Geographical Information System (GIS) this ensures consistency for all measurements.

Multiple Births

Where a single place remains and the next child to be offered is a twin or other multiple births, then the school will use its discretion in deciding whether to offer over the PAN.

Tiebreak

In the event of a tie-break in any oversubscription criteria, distance will be the deciding factor, using the GIS and may involve an officer walking the route using a pedometer.

Waiting Lists

If your child has been refused admission, a waiting list will be held by the Local Authority. Priority will be given according to the oversubscription criteria stated for this school based on the information provided at the time of application. The waiting list will be open until the end of the Autumn term 2026.

Late Applications

Late applications will be administered in accordance with the home local authority co-ordinated admissions scheme.

Right of Appeal

Where a parent has been notified that a place is not available for a child, every effort will be made by the Local Authority to help the parent to find a place in a suitable alternative school. Parents who are refused a place have a statutory right of appeal. Further details of the appeals process are available by contacting Academy Administration Manager, Mrs P Rutter.

False Information

The governing body reserves the right to withdraw the offer of a school place, or where a child is already attending the school, the place itself in the first term of attending where it is satisfied that the offer or place was obtained fraudulently.

School Transport Arrangements

Details on transport arrangements for which the local authority are responsible are available on pg 15.

Admission of children outside their normal age group

Admission authorities must make decisions on the basis of the circumstances of each case and in the best interests of the child concerned. This will include taking account the parent's views; information about the child's academic, social and emotional development; where relevant, their medical history and the views of a medical professional; whether they have previously been educated out of their normal age group and whether they may naturally fall into a lower age group if it were not for being born prematurely, they must also take into account the views of the Head Teacher of the school concerned. When informing a parent of their decision on the year group the child should be admitted to, the admission authority must set out clearly the reasons for their decision.

If a parent seeks a place in a year group other than the year that their child would 'normally' be in (outside of their chronological age), they need to put their request in writing with a clear explanation of why they are making their request, for example their child is gifted and talented, they have missed a significant part of their education due to a medical problem.

If a parent seeks a place for their child to start Year 7 when they are in Year 5 and it is within the co-ordinated timeframe for applying (beginning of September to 31st October) then this will be considered as part of the normal admissions round.

Any application will be forwarded to the Head of School, Longfield Academy and will be considered by the Admissions Sub-Committee. Once a decision has been made the Admission Authority will write to the parent(s) informing them of the decision and setting out reasons for such, if parents do not agree with the decision, they have a statutory right to appeal against the refusal of a place at the school. This does not apply if they are offered a place at the school but it is not in their preferred age group. In this instance parents must complete an In-Year Application Form.

In-Year Applications

An application can be made for a place for a child at any time outside of the normal admissions round and the child will be admitted where there are available places and/or in conjunction with the Local Authority Fair Access Protocol. Applications should be made by contacting the Local Authority Schools Admissions Team on 01325 406333. Where there are places available but there are more applications than places, the published oversubscription criteria, as set out in this policy, will be applied. If there are no places available, a parent has a right to appeal.

Polam Hall School

Grange Road, Darlington, DL1 5PA

Tel 01325 463383

E-mail information@phs.woodard.co.uk

Head Teacher: Mrs Kate Reid

The Board of Directors of Woodard Academies Trust is the Admission Authority for this school.

Published Admissions Number

The published admission number at the normal point of entry, Yr7, is 84.

Admissions Arrangements

Applications for places will be made in accordance with the LA's co-ordinated admission arrangements and must be made on the application form in the back of this guide or online. Students who are on roll at Polam are entitled to automatically transfer from Year 6 to Year 7, are still requested to apply.

Oversubscription Criteria

After the admission of children with an Education, Health and Care Plan where Polam Hall School is named on the plan, and where the number of applicants is greater than the published admission number, applications will be considered against the criteria set out below in the order:

Priority 1: Looked after or Previously Looked After Children (see page 13 for definitions)

Priority 2: Siblings (see note 1)

Priority 3: Staff Member (see note 2)

Priority 4: 60% of the remaining places available to postcodes areas DL1 or DL3 (see note 3)

Priority 5: 10% of the external places available to 'Pupil Premium' or 'Service Premium' Children (see note 4, 5 & 6)

Priority 5: Remaining places (see note 7)

*NB Year 6 pupils can automatically transition to Y7, so the PAN of new pupils into Y7 will be 84 minus the number of pupils from Y6 continuing into Y7. This number will be around 28.

Notes and Definitions

Note 1: Siblings

Those children who have a sibling at Polam Hall School at the time of entry. The term 'sibling' means a full, step, half adopted or foster brother or sister. Siblings must all live at the same permanent home address from Monday to Friday.

Note 2: Staff member

Children who have a parent who is a member of staff of Polam Hall School at the time of application where:

- i) the member of staff has been employed at Polam Hall School for two or more years at the time at which the application for admission to the school is made, *and/or*
- ii) the member of staff is recruited to fill a vacant post for which there is a demonstrable skill shortage.

Note 3: 60% of the remaining places

60% of the remaining places available will be allocated to children whose permanent home address is within Polam Hall School's local area, defined as postcode areas DL1 or DL3.

Note 4: 10% of the remaining places

10% of the remaining places available will be allocated to children who are likely to attract the 'Pupil Premium' or 'Service Premium' (regardless of their permanent home address).

Note 5: Service Premium

A child will attract the 'service premium' if a parent is serving in the regular UK armed forces or was serving in the past 3 years OR they are in receipt of a pension under the Armed Forces Compensation Scheme (AFCS) and the War Pensions Scheme because his/her parent(s) died on active service with the UK armed forces.

Note 6: Pupil Premium

A child who will attract pupil premium if he/she is eligible for free school meals (FSM) or has been eligible for them at any point in the last six years.

Note 7: Remaining Places

The remaining places will be allocated to pupils whose permanent home address lies outside postcode areas DL1 or DL3.

Home Address

For the purposes of criteria 4, 5 and 6 a child's home address is defined within Polam Hall School's admission arrangements as being the child's normal place of residence. Where legal custody is equally shared between parents, then it is up to them to agree which address to use for the purpose of making an application to Polam Hall School. If legal custody is not equally shared, the address of the parent with the majority of custody will be used.

Waiting lists

If your child has been refused admission, a waiting list for unsuccessful applicants who remain keen to secure a place should one become available prior to or during the school year. The waiting list will be recorded in accordance with the oversubscription criteria set out in the school policy. Looked after children and previously looked after children and those children allocated a place at the school in accordance with the local authority's Fair Access Protocol, will take precedence over those on a waiting list.

Tie break

In the event of a tie-break in any oversubscription criteria, places will be allocated by random allocation. Applications will be allocated a computer-generated reference number and the school will undertake a random draw to select successful applicants. An independent adjudicator will supervise the draw to ensure that the process and outcome are fair, unbiased and transparent.

Multiple Births

If, children of multiple birth are tied for the final place, the school will admit them over the admission number.

Appeals

Parents dissatisfied with the outcome of an application to the school are eligible to appeal. Parents should contact the Local Authority school admissions team for details on how to appeal. For appointments at the school, parents should contact Mrs S Weller, Admissions Clerk at Polam Hall School.

School transport arrangements

Details on transport arrangements for which the Local Authority are responsible are available on pg 15.

Admission into year groups other than Year 7

Parents moving into the area, or who wish to move their child from another secondary school in the area should apply to the Local Authority. If the year group applied for has a place available, then the child will be offered a place. If more applications are received than there are places available, then the oversubscription criteria will be applied, if no places are available then the child will not normally be offered a place unless an Educational, Health and Care Plan names Polam Hall School.

Admission of children outside their normal age group

Parents may request a place in a year group outside their child's normal age group. If they do they should complete an application form and attached a covering letter along with any accompanying documentation that details the circumstances behind their request: for example if their child has missed a significant amount of time due to ill health or they believe their child to be gifted and talented. This should be forwarded to the Admissions Officer at Polam Hall School. The Principal will consider the request.

All such request will be considered on their merits, taking into account the circumstances of the request and the child's best interests. If a request is refused the child will still be considered for admission to their normal age group. Once a decision has been made the school will write to the parent(s) informing them of the decision and setting out the reasons for the decision. Parents have a statutory right to appeal against the refusal of a place but this does not apply if the authority can offer a place but it is not in the year group that has been requested.

St Aidan's Church of England Academy

Hundens Lane, Darlington, DL1 1LL

Telephone Number: 01325 373770

Email Address: enquiries@staidansacademy.org.uk

Principal: Miss Nikki Gibb

The Board of Directors of Northern Lights Learning Trust is the Admissions Authority for this school.

Published Admissions Number

The published admission number at the normal point of entry, Yr7, is 120.

Admission Arrangements

Applications for places at the Academy will be made in accordance with the coordinated admission arrangements for Darlington Local Authority and will be made on the Secondary School Application form provided and administered by the Local Authority.

Oversubscription Criteria

Where the number of applications for admission is greater than the PAN, applications will be considered against the criteria set out below. After the admission of pupils with an Education Health and Care Plan where the Academy is named on the plan, the criteria will be applied in the order in which they are set out below:

Priority 1: Children in Public Care (see page 13 for definitions)

Priority 2: Pupils with exceptional medical factors and/or social factors directly relating to school placement (see note 1)

Priority 3: Sibling Links (see note 2)

Priority 4: Distance (see note 3, 4 & 5)

Priority 5: Other children

Notes and Definitions

Note 1: Definition of Medical Factors

Supporting evidence for applications under the provisions of priority 2 should set out the particular reasons why the Academy is the most suitable school for the pupil to attend and the difficulties it would cause if the child had to travel to another school. Applications under this criterion should be supported by written evidence from a doctor or other professional practitioner. Applications in this category will be considered on a case by case basis.

Note 2: Sibling Links

Children who have a brother or sister already attending St Aidan's Academy and who are expected to be on roll at the time of admission. Definition of siblings (brothers or sisters) are considered to be those children who live at the same address and either:

- Have one or both natural parents in common;
- Are related by a parent's marriage,
- Are adopted or fostered or
- Their parents are married/co-habiting and children live together in the same household;
- They are children of the same household.

Note 3: Distance

Pupils who live nearest the Academy, measured from the front door of the home address (including flats) to the main entrance to the Academy as determined by the Governing Body, by the shortest walking route judged to be safe by the Academy, using the criteria adopted by the LA.

Note4: Definition of Home Address

This is the child's permanent address where he or she generally resides. Temporary addresses may not be used in the application for admission to the Academy. For parents who may have more than one property, reference should only be made to the property in which they and the child(ren) mainly reside. Where parents are separated and the child lives for periods with both, then the home address will be that of the parent that receives the child benefit. If the main address has changed temporarily, for example where a parent resides with extended family during a period of sickness or takes up temporary accommodation due to building works/renovation, then the home address remains that at which the parent was resident before the period of temporary residence began. Where the temporary change of address is due to the sale of property, evidence of the particular circumstances will be required to determine the home address for the purposes of the application.

Note 5: Measurements

For applications which require a measurement to be undertaken in order to apply the oversubscription criteria or to determine a tie-break situation, the Local Authority on behalf of the Academy will measure the distance using a Geographical Information System (GIS) this ensures consistency for all measurements. In the event that two distance measurements are identical, the school will use random allocation to decide which child should be offered the place. The process will be conducted in the presence of a person independent of the school.

Tie break

In the event of a tiebreak, the Academy will carry out a thorough investigation, which may involve an Officer walking the route using a pedometer.

Multiple Births

In the case of a single place remaining and the next child to be offered is a twin or other multiple birth, then the admissions Authority will use its discretion in deciding whether to offer over the published admission number.

Waiting list

The LA will maintain a waiting list until the end of the autumn term 2026. After this time the Academy will maintain a waiting list, which will be open to any parents to ask for his or her child's name to be placed on the waiting list, following an unsuccessful application, due to oversubscription for the relevant year group. The position of children on the waiting list will be determined solely in accordance with the oversubscription criteria. Where places become vacant, they will be allocated to children on the waiting list in accordance with the oversubscription criterion.

School Transport Arrangements

Details on transport arrangements for which the Local Authority are responsible are available on pg 15.

Arrangements for appeal panels

Parents will have the right of an Independent Appeal Panel if they are dissatisfied with an admission decision of the Academy. The appeal panel will be independent of the Academy. The arrangements for appeals will be in line with the School Admission Appeals Code published by the DoF as it applies to Foundation and Voluntary Aided schools. The determination of the appeal panel will be made in accordance with the School Admission Appeals Code and is binding on all parties. The Academy will prepare guidance for parents about how the appeals process will work and will provide parents with a named contact who can answer any enquiries they may have about the process. For further details, write to the Chair of Governors at St Aidan's Church of England Academy.

Anyone wishing to contact the Academy with regard to its admission arrangements should contact Mrs A Simpson, PA to the Principal, Telephone (01325) 373778.

In-Year Admissions

An application can be made for a place for a child at any time outside of the normal admissions round and the child will be admitted where there are available places and/or in conjunction with the Local Authority Fair Access Protocol. Applications should be made by contacting the Local Authority Schools Admissions Team on 01325 406333.

Where there are places available but there are more applications than places, the published oversubscription criteria, as set out in this policy, will be applied. If there are no places available, a parent has a right to appeal.

Admission of children outside their normal age group

Parents may request that their child is admitted outside their normal age group. When such a request is made, the Academy will make a decision on the basis of the circumstances of the case and in the best interests of the child concerned, taking into account the views of the Headteacher and any supporting evidence provided by the parent, bearing in mind the age group the child has been educated in up to that point.

The process for requesting such an admission is to apply to the Academy in writing giving a clear explanation of why the request is being made. Once a decision has been made the Admission Authority will write to the parent(s) informing them of the decision and setting out reasons for such.

Parents have a statutory right to appeal against the refusal of a place but this does not apply if the authority can offer a place but it is not in the year group that has been requested.

Wyvern Academy

Eggleston View, Darlington, DL3 9SH
Telephone Number – 01325 351377
Email address – wva.enquiries@consilium-at.com
Head of School: Mrs Nadia Robinson

The Board of Directors of Consilium Academies Trust is the Admission Authority for this school.

Published Admissions Number

The published admission number at the normal point of entry, Yr7, is 140.

Admission Arrangements

Applications for places at the Academy will be made in accordance with the coordinated admission arrangements for Darlington Local Authority and will be made on the Secondary School Application form provided and administered by the Local Authority.

Oversubscription Criteria

After the admission of pupils with an Education Health and Care Plan where Wyvern Academy is named on the plan, the following criteria will be applied in order of priority, for deciding how places will be allocated:

Priority 1: Looked After and Previously Looked After Children (see page 13 for definitions)

Priority 2: Family Links (see note 1)

Priority 3: Transport Links (see note 2)

Priority 4: Distance (see note 3)

Notes and Definitions

Note 1: Family Links

Children who have a brother or sister already attending Wyvern Academy and are expected to be on roll at the school at the time of admission. Children have a family link if:

- They are half or full brother or sister.
- They are adoptive brother or sister.
- Their carers are co-habiting and children live together in the same household.
- They are children of the same household (e.g. carers have special guardianship/residency order).

Note 2: Transport Links

Children for whom Wyvern is the closest school and the route is unsafe (not lit and paved at regular intervals) or is the nearest appropriate school and is over 3 miles (measured by the shortest walking route where applicable).

Note 3: Distance

Children who live nearest Wyvern measured from the front door of the home address (including flats) to the main school gate as designated by the LA, by the shortest walking route judged to be safe (lighting at regular intervals and paved/tarmacked). To remain consistent the Authority uses a Geographical Information System to measure all distances. (See explanation of home address).

Home Address

The address is used for applying the admissions criteria. This means that when you state your school preferences you must give the home address at the time of application. You must not give the address of childminders or other family members who may share in the care of your son / daughter. For parents who may have more than one property, reference should only be made to the property in which they and the child(ren) mainly reside. Evidence of residency will be requested where necessary.

The Schools' Admissions Team will check addresses against other records held by Darlington Borough Council, such as the electoral register. If the main address has changed temporarily, for example where a parent resides with extended family during a period of sickness or takes up temporary accommodation due to building works/renovation, then the home address remains that at which the parent was resident before the period of temporary residence began. However, if you have sold your property (exchanged contracts) and move into temporary accommodation, you will be required to provide evidence of your situation and a decision will be made based upon the evidence provided.

Where a family intends to move into the Borough, a request for a school place based on a new address cannot be considered until a letter is provided from a licensed conveyancer or solicitor confirming exchange of contracts. It is the parents' responsibility to inform the Local Authority immediately of any permanent change of address during the period from receipt of application up to the offer date, as this may affect the admission offer made for your child. In the event of a change of address affecting the application for your child to attend an over-subscribed school, the Local Authority will request a letter from a licensed conveyancer or a solicitor's letter confirming exchange of contracts.

Fraudulent applications

The Academy reserves the right to withdraw any offer made on the basis of an inaccurate or misleading address.

Measurements

For applications which require a measurement to be undertaken to apply the oversubscription criteria or to determine a tie-break situation, the Local Authority on behalf of the Academy will measure the distance using a Geographical Information System (GIS) this ensures consistency for all measurements.

Tie break

In the event of a tiebreak distance will be the deciding factor, which may involve an Officer from the LA walking the route using a pedometer.

Multiple Births

In the case of a single place remaining and the next child to be offered is a twin or other multiple birth then the admission authority will use its discretion in deciding whether to offer over the published admission number.

Waiting Lists

If your child has been refused admission, a waiting list is available where priority will be given according to the oversubscription criteria stated for this school based on the information provided at the time of application. The waiting list will be open until the end of the autumn term 2026.

School Transport Arrangements

Details on transport arrangements for which the Local Authority are responsible are available on pg 15.

In-Year Admissions

An application can be made for a place for a child at any time outside of the normal admissions round and the child will be admitted where there are available places and/or in conjunction with the Local Authority Fair Access Protocol. Applications should be made by contacting the Local Authority School Admissions Team on 01325 406333.

Where there are places available but there are more applications than places, the published oversubscription criteria, as set out in this policy, will be applied. If there are no places available, a parent has a right to appeal.

Admission of children outside their normal age group

Should a parent seek a place in a year group other than the year that their child would 'normally' be in (outside of their chronological age), requests should be put in writing with a clear explanation of why the request is being made, for example their son / daughter is gifted and talented, they have missed a significant part of their education due to a medical problem etc.

2.19 of the Admissions Code states:

*Admission authorities **must** make decisions on the basis of the circumstances of each case and in the best interests of the child concerned. This will include taking account the parent's views; information about the child's academic, social and emotional development; where relevant, their medical history and the views of a medical professional; whether they have previously been educated out of their normal age group and whether they may naturally fall into a lower age group if it were not for being born prematurely. When informing a parent of their decision on the year group the child should be admitted to, the admission authority **must** set out clearly the reasons for their decision.*

Parents have a statutory right to appeal against the refusal of a place but this does not apply if the authority can offer a place but it is not in the year group that has been requested.

Anyone wishing to contact the Academy regarding its admission arrangements should contact the Attendance Administrator.

Atypical Year of Entry School

The DFE has placed a requirement on Local Authorities to inform parents who have a child in Year 9 of another opportunity for education when they would be commencing Year 10 of their education, that they may not be aware of. This does not mean that you are required to move your child from their existing school if this is still the best option for them.

These schools which have atypical admission ages; enrol pupils at a different age to typical 11-18 secondary schools; they are University Technology Colleges and Studio Schools. The Local Authority is required to inform you of the availability of these types of settings when they are within a reasonable distance travelling distance of the local area.

University Technology College South Durham

UTC South Durham is a specialist school and Sixth Form focusing on engineering, technology, science and maths for 14-19 year olds. It attracts students from across the North East and is popular with young people from Darlington and surrounding areas. The focus is on gaining GCSE, A Level or T Level qualifications and developing skills that employers are looking for. We welcome applications from students who are currently in Year 9 ready for the next steps into their GCSE's starting September 2026 in Year 10.

UTC's were established by the government to encourage young people to study technical subjects and sciences. UTC South Durham is on the Aycliffe Business Park and was founded by the University of Sunderland, Hitachi Rail Limited and Gestamp Tallent.

The UTC was Ofsted rated 'Good' across all areas in March 2024, recognising the quality of delivery as a school, as well as the technical and employment strengths. In a recent Parent View Survey 95% of parents said they would recommend the UTC. This has meant we are officially the happiest school in County Durham! Destinations of our students continue to be outstanding. Of 18 year old leavers, all who wanted to go to university did so, all to their first choice and all to study STEM subjects. Many of our students succeeded in gaining paid apprenticeships with local employers – six times the national average for the age group. There have been several recent successes with starting degree apprenticeships in a range of sectors from accountancy to civil engineering.

Our Student Leader Profile represents what we want for our students. It was created by our wider community of staff, students, parents, business and community partners. Each student will have the opportunity to develop their academic and technical knowledge as well as professional career experiences and core skills. At the UTC students' personal, professional and technical development is just as important as the grades they achieve.

Our Year 10 and 11 of programme of technical subjects, including a choice of three different types of Engineering, along with the core GCSE subjects of English Language and Literature, Maths, Sciences and a range of option GCSEs is an offer that inspires and excites students interested in STEM. Students visit companies and undertake projects led by local businesses and access work experience. Most students continue to the UTC's Sixth Form to study further technical subjects before progressing to apprenticeships or university.

The UTC operates a full working week. The 30 hours of education a week is more than most schools and allows a full set of GCSE subjects as well as technical learning and workplace experiences. A strong interest in STEM subjects (Science, Technology, Engineering and Maths) and a good work ethic are essential. UTC South Durham is located just north of Darlington and is very well served by public bus and train as well as the UTC's own minibuses.

There are 150 places for Year 10 in 2026 and 150 for Sixth Form. Applications are made directly to the UTC and can be completed on line from 1 September 2025 at www.utcsouthdurham.org Information about admissions is also available on the website.

Open events for families are on Thursday 16 October 2025 and Thursday 20 November 2025 from 4.30pm to 7.30pm and can be booked through the website www.utcsouthdurham.org

NE Futures UTC

NE Futures UTC is a University Technical College specialising in careers in Healthcare Science and Digital Technology which opened in September 2019 and is based in Newcastle City Centre close to Metro, bus and rail links. UTCs are secondary schools for young people aged 14 to 19 and they are sponsored by a university and local employers. They are set up by the government to encourage young people to study technical subjects and sciences and to give them the opportunity to learn the skills that employers are looking for.

NE Futures UTC Business Partners include University of Sunderland, NHS, Accenture, Sage and Ubisoft, to name a few. Students will work with a wide range of companies from across many sectors, developing workplace skills and the confidence to decide on a future career direction. Students in year 10 and 11 will study technical subjects, such as Computer Science along with the core GCSE subjects of English Language and Literature, Maths, Sciences and a range of option GCSEs. They will have the chance to visit companies and undertake projects led by local businesses. Students are then able continue to the UTC's 6th form to study further technical subjects before progressing to apprenticeships or university.

The UTC operates a full working week (9am to 5pm, finishing earlier on a Friday – 2.30pm). An interest in Science, Technology, and Maths subjects and a good work ethic are essential to be a successful UTC student.

NE Futures UTC has 120 student places available for September 2026 in Year 10 and 120 in Year 12. Applications are made directly to the UTC by submission through the website (www.nefuturesutc.co.uk). Information about admissions is available on the website or by contacting the school directly. Open events for families who wish to consider the UTC can also be booked via the website.

NE Futures UTC, Forth Road, Stephenson Quarter, Newcastle upon Tyne, NE1 3AS - Tel. [0191 917 9888](tel:01919179888)
www.nefuturesutc.co.uk

Other Information

In-Year Admissions to Secondary School in Darlington Authority

Darlington Council administers the process for in-year applications for all schools in the Authority. Families who move into the area who require a place(s) at a Darlington Primary school can either apply through the online portal on the Council's website or will be sent an in-year application form to complete; the school's admissions team will look to process the application within seven working days on receipt of this form. Parents are strongly advised to contact the school's admissions team before considering moving or seeking a place as they advise on availability. Occasionally schools will ask for further details from the school that the child is currently registered at; if Part B of the form has not been fully completed, this may delay the processing of the application form. The LA will write to the parent informing them whether a place can be offered or not. The school will look to arrange a meeting with the parent to visit the school. A start date will only be confirmed after a meeting with the school has taken place. However, should a parent request a place at a school that has no places available, then they will be informed about the appeals process.

In-Year Transfer of Pupils between Darlington Secondary Schools

In the case of house moves or permanent exclusion from secondary school, a transfer of school may be unavoidable. At other times the decision to change a child's school will need extremely careful consideration. Factors parents are asked to take account of include, the availability of GCSE examination subjects, changes in friendship groups and the general disruption to studies inevitably caused by change. Parents should also consider the fact that a transfer is not guaranteed to solve any problems a child may be experiencing at school.

A child could only transfer to another Darlington secondary school if places are available, for information on available places parents should contact the Schools' Admissions Team. Parents are advised to consult staff at the child's present school to discuss the reasons for a transfer, if they then still wish for the transfer to proceed then an application form will be provided. A completed form must be returned to the child's current school this in turn will be forwarded to the school admissions team for processing. Parents are required to ensure that their child(ren) maintain attendance by remaining at their current school until the application for transfer is considered by the admission authority.

In-Year Fair Access Protocol

In-Year Fair Access Protocols exist to ensure that unplaced children, especially the most vulnerable, are offered a place at a suitable school as quickly as possible and to ensure that all schools in a LA area admit their fair share of children with challenging behaviour. All secondary schools within Darlington Authority have agreed to admit children through the protocol. Those children identified by the LA will take precedence over children on a waiting list who are already attending another school.

Holidays during term time

The current law does not give any entitlement to parents to take their child on holiday during term time. Any application for leave must be in exceptional circumstances and the head teacher must be satisfied that the circumstances warrant the granting of leave.

If parents do take children out of school during the term and the school do not authorise the absence, then the LA can issue a Penalty Notice as a sanction against the parent. From August 2025 this Notice attracts a fine of £80 per parent per child if paid within 21 days, if not paid within 28 days, the notice increases to £160.

School holiday dates 2026/2027

Schools return on Tuesday 1 September 2026

October Half-Term

- Term ends: Friday 23 October 2026
- October Half-Term: Monday 26 October – Friday 30 October 2026
- Term commences: Monday 2 November 2026

Christmas

- Term ends: Friday 18 December 2026
- Christmas: Monday 21 December 2026 – Friday 1 January 2027
- Term commences: Monday 4 January 2027

February Half-Term

- Term ends: Friday 12 February 2027
- February Half-Term: Monday 15 February – Friday 19 February 2027
- Term commences: Monday 22 February 2027

Easter

- Term ends: Thursday 25 March 2027
- Easter/Spring: Friday 26 March – Friday 9 April 2027
- Term commences: Monday 12 April 2027

May Day Monday 3 May 2027

May Half-Term

- Term ends: Friday 28 May 2027
- May Half-Term: Monday 31 May – Friday 4 June 2027
- Term commences: Monday 7 June 2027

Summer

- Term ends: Wednesday 21 July 2027
- Summer Holidays: Thursday 22 July – Tuesday 31 August 2027
- Term commences: Wednesday 1 September 2027

The number of term days shown is 195. Up to five of these days will be used as professional development days for teaching staff; pupils will not attend on these days. Each school determines when these will take place and will inform parents.

Please note: Dates may vary on an individual school basis, so always check with your school.

How will your child travel to school?

Your child will travel between home and secondary school around 400 times each year. Have you thought about how they are going to make that journey? Often taking kids to school in the car is unavoidable and we understand that sometimes this may be the only way. However, driving to school could also result in being stuck in traffic; making you feel hassled and like everyone is getting in the way; not to mention trying to park and the stress of the congestion at the school gates. To make the school run a great part of the school day parents/carers could consider walking, cycling, scooting or even car-sharing. Even if it's just once a week, the school journey can be a wonderful opportunity to spend time with your kids and an active school journey keeps grown-ups healthy and fit too.

Make the school run = the fun run!

- **Try walking, cycling or scooting.** Often faster than going by car where you might find yourself stuck in traffic or dealing with congestion at the school gate.
- **Why not park & stride?** If you have to drive the school run, why not park a bit further away from the school walk the last 5-10 minutes to school. So much easier to park and it's proven that walking boosts concentration!
- **Give the bus a go.** Over 90% of households have a bus stop within a 6-minute walk of their home – does your closest stop have a service that goes near to your child's school? If so, give the bus a go.
- **Make new friends!** Halve the costs by sharing the school run with other parents/carers that are making the same journey. Less cars on the road = a safer journey to school. And more time for you if it's not your day to drive!

Switching up the school run by leaving the car behind can offer **loads of benefits** to you and your family.

Saves money - Public transport or car-sharing may be more convenient than you first think and could save you a fortune! Alternatively, walking or cycling to school will mean you spend virtually nothing on the school run.

Gets the whole gang fit! It's important that young people do plenty of physical activity to build a healthy body. Kids need 60 minutes of activity a day to help them stay happy and healthy. The 60 active minutes doesn't have to be all in one go and it doesn't have to be sport – simply walking and cycling to and from school can make a difference!

Boosts thinking power! Healthy bodies help make healthy minds. Research shows strong links between physical fitness and academic achievement. Getting some physical activity on the way to school helps young people arrive alert and ready for the day.

Creates independence. Young people get much less freedom nowadays; for kids to grow up and look after themselves they need to learn how – the school runs is a great place to start. Taking the bus, walking or cycling fosters independence and responsibility in children.

Helps our towns stay green and clean. By choosing public transport, walking, cycling or even sharing your car journey we don't just reduce pollution, we also improve the environment by reducing noise and congestion levels. It's proven that more people walking create safer, cleaner towns.



For more information about how to make the journey to school the best it can be, visit www.letsготeesvalley.co.uk Do follow us on Facebook @LetsGoTeesValley or twitter @LetsGo_TeesVal

Additional Educational Needs

Some children will need special help with their learning at some time in their school life. There is a strong commitment in Darlington to inclusion, which means that children should be educated with their peers in the neighbourhood school wherever possible. If special help is required, it can usually be provided from resources that are already available in school. There is a system in all schools to identify which children need special provision and parents have a right to be informed when this is happening.

In the case of a very small number of children with severe, lifelong complex needs, the Authority may need to consider carrying out a statutory assessment of special educational need. Parents and schools have the right to request the Authority to consider carrying out such an assessment. There is a procedure for dealing with requests from parents and schools and all referrals are considered by the Moderation Panel to ensure consistency and transparency in decision making.

The Authority will obtain advice from the child's school, an Educational Psychologist, Consultant Paediatrician and other specialists where necessary. If, when the assessment is complete, the Authority decides to issue an Education, Health and Care Plan, parents are again encouraged to make their views known and have the opportunity to appeal against the special educational provision that is proposed.

Further information may be obtained from the school or from the Special Educational Needs Statutory Team on 01325 406333.

SEND Information, Advice and Support Service (SIASS)

The SEND Information, Advice and Support Service supports parents with children and young people who have or may have additional needs, providing free impartial and independent advice and information. The information that can be provided relates to the full range of additional needs children and young people may require, and the advice offered covers legal issues, assessment, provision and services available relating to education health and social care needs.

The service provides a website and termly newsletter for parents, schools and support organisations.

Further information can be obtained from Darlington Information, Advice and Support Service, by telephoning 01325 405878 or by visit the Council's website and click on the Education and Learning link.

Education Other Than At School (EOTAS)

EOTAS provides alternative education for children no longer attending mainstream school on a day-to-day basis. EOTAS covers Young People who:

- have been permanently excluded from a mainstream school and are allocated a place based at Rise Carr College (a Pupil Referral Unit). Rise Carr College also accepts referrals for pupils who are in danger of exclusion. These places can be full or part time.
- are unable to access school due to medical reasons or because they are an Anxious School Refuser (ASR). These pupils are referred by the child's school to the Home and Hospital Teaching Service (HHTS) via the VPP (Vulnerable Pupil Panel), until they are able to return to school. The HHTS also provides support for pregnant schoolgirls and teenage mums while they are unable to attend school.
- are educated at home. Parents can choose to educate their children at home and this is called Elective Home Education (EHE). The LA has a role to monitor this provision to ensure that education is suitable and that the young people are safe.

Darlington Families Information Service

Darlington Families Information Service provides free, impartial information and advice on all aspects of childcare, activities for children and young people information on early years education and childcare. Information is widely available for parents, carers, employers, childcare providers and practitioners.

A useful resource that parents, carers, practitioners and young people can also use is the Livingwell Directory <https://livingwell.darlington.gov.uk/> Here you can find comprehensive and up-to-date information on local organisations, services and events relating to children and young people, their parents and carers, as well as for the practitioners who support them.

The Families Information Service also offers support and advice for parents with children who have or may have special educational needs and can help them, schools and the local authority work together to meet the needs of the child. You can also contact the SEND Information, Advice and Support Service (SEND IASS) 01325 405878 or email: IASS@darlington.gov.uk.

All calls to Families Information Service are treated in confidence and the team aims to provide any information within 24 hours of the enquiry. Contact the Service by telephoning 01325 406222, Option 7 between 8.30am – 5.00pm Monday to Thursday and 8.30am – 4.30pm on a Friday. An answer phone service is available outside these hours or you can e-mail pfis@darlington.gov.uk

Raising of the Participation Age

The Education and Skills Act 2008 increased the minimum age at which young people in England can leave learning, thus requiring them to continue in education or training to the age of 18. Raising the participation age does not necessarily mean young people must stay in school; they will be able to choose one of the following options:

- full-time education, such as school, college or other training provider.
- work-based learning, such as an Apprenticeship.
- part-time education or training if they are employed, self-employed or volunteering for more than 20 hours a week.

Clothing

All pupils are expected to attend school appropriately dressed. To assist parents, schools have adopted guidelines on clothing and information regarding uniform policies can be found in an academy's prospectus available from the academy concerned. Academies must not act as sole suppliers of school uniform. Darlington Borough Council **does not** make any grants towards the provision of school uniforms.

The National Curriculum

The national curriculum is a set of subjects and standards used by primary and secondary schools so children learn the same thing. It covers what subjects are taught and the standards children should reach in each subject. Other types of schools such as Academies don't have to follow the national curriculum. Academies must teach a broad and balanced curriculum including English, Maths and Science. They must also teach Religious Education.

Charging Policy for School Activities

Under the 1996 Education Act, schools are prohibited from charging for activities, which are an essential part of the curriculum during school hours. However, schools may ask for voluntary contributions to help with the cost of certain activities e.g. educational visits during school hours. Parents may be charged for events their children take part in outside of the school day e.g. school camps.

Advice on how to complete the Darlington Secondary School Application Form

Ensure you have read the guide and fully understand it. If you are unsure of anything in the guide you **MUST** seek advice. You will sign a declaration on the application form stating you have fully understood the contents of this guide before you completed the form. If you **DO NOT** live in the borough of Darlington, **DO NOT** complete this form. Contact the local authority where you reside.

SECTION 1: Pupil details

- If your child uses more than one surname, please state both legal and chosen.
- Check the date of birth you give is correct.
- If your child attends a primary school in another Local Authority, please give address details for the primary school, e.g. the name of the town.
- Children in care may live with a foster family, in a children's home or in their own home – Social Services will be involved. Check with your social worker if you are not sure.
- Was your child previously "Looked After" look at page 13 for definitions

SECTION 2: Parents details

- Please complete your details
- If both parents do not reside at the same address, have you consulted the other parent about the application?

SECTION 3: Listing the schools you prefer

- You can list schools in Darlington and, if you wish, in other areas also. If the schools you are interested in are situated in other authorities, you should read their admission guides before you decide.
- If you decide to apply for a school that is often oversubscribed, look carefully and see what criteria your child would come under. Talk to the Schools' Admissions Team for advice.
- You are not required to state a reason for your preference(s) but you may do so in the 'reason' section. The only criteria used to allocate places are those published on pages 16 to 48 of this guide.

Examples of reasons:

- | | | |
|-----------------|-------------------|---|
| 1. Distance | 2. Social | 3. Medical |
| 4. Sibling link | 5. Closest school | 6. School academic results |
| 7. Religion | 8. Staff Child | 9. Religious or philosophical convictions |

SECTION 4: Brothers and sisters (siblings/family links)

- If you have an older child in any of the schools you have named as a preference, please give their details.
- Siblings - the brother or sister must be on the school roll at the expected time of transfer (September 2026). Some schools may consider siblings differently, please check their admissions criteria.

SECTION 5: Religion – this section has replaced the previous additional supplementary form for a catholic school.

- Please note any information given in this section should be confirmed by evidence sent directly to the school which you are applying for a place at. Baptismal or letters of support **should not** be sent to the LA.

SECTION 8: Declaration

- Remember to sign and date your form before returning it.
- **CHECK YOUR FORM.** Are the details correct? Have you understood everything and if not, sought advice where necessary.
- Note the contents of the declaration.

Check the information you have given is correct. You have sought advice where necessary.

Please contact the Schools' Admissions Team if you need help completing the form.

BE ON TIME: If you apply after the closing date, you could lose out on a school place you want.

DON'T BE LATE – THE CLOSING DATE IS

31 OCTOBER 2025

Alternatively apply online at www.darlington.gov.uk/admissions - see page 8 for details.

SECONDARY SCHOOL APPLICATION FORM 2026/27 FORM FOR RESIDENTS OF DARLINGTON ONLY



DARLINGTON
Borough Council

1. Your child's details

Child's Forename	<input type="text"/>	Child's Middle Names	<input type="text"/>
Child's Legal Surname	<input type="text"/>	Chosen Surname	<input type="text"/>

Child's current address and postcode

- If you move address after the submission of this application you must inform the School Admission Team immediately
- Admission authorities can withdraw the offer of a place if a false or inaccurate address is given on this application form
- It is your responsibility to ensure the School Admissions Team receives this form by **31 October 2025**.

Postcode:

Child's Date of Birth	<input style="width: 100px; height: 20px;" type="text"/>	Gender (Please tick as appropriate)	<input type="checkbox"/> Male	<input type="checkbox"/> Female
------------------------------	--	---	--------------------------------------	--

Name of Primary / Junior School your child currently attends:

Is your child 'looked after' by the Local Authority (i.e. in Care?)	Yes	<input type="checkbox"/>	No	<input type="checkbox"/>
If yes, which authority _____				

Was your child previously "Looked After" by a Local Authority but ceased to be so because they were adopted or became subject to a child arrangements order or special guardianship order?	Yes	<input type="checkbox"/>	No	<input type="checkbox"/>
---	------------	--------------------------	-----------	--------------------------

* Please attach a copy of the adoption order, child arrangements order or special guardianship order.

Section 2 – Applicant(s) Details

Applicant 1	Applicant 2
Title: Mr Mrs Miss Other	Title: Mr Mrs Miss Other
First Name(s):	First Name(s):
Surname:	Surname:
Address (if different to that of the child)	Address (if different to that of the child)
Daytime Tel No:	Daytime Tel No:
Relationship to child:	Relationship to child:
Email address:	Email address:
Have they been informed/consulted about this application?	Have they been informed/consulted about this application?

Correspondence may be shared with any other parent(s)/person(s) who have parental responsibility for the child unless the applicant states a reason for withholding information e.g. threat of domestic violence. Please state reason and provide any supporting documentation e.g. Court Order.

A copy of the form was sent to the other parent(s)/person(s) with parental responsibility on and any confirmation of agreement to this application should be provided within 14 working days of this date. If not provided, then the application will be processed without delay. If there is a known disagreement between the parent(s)/person(s) who hold parental responsibility the application will not be processed until the disagreement is resolved and confirmation of agreement is provided. e.g. an agreement signed by all parent(s)/person(s) in disagreement or a Court Order.

The Local Authority will only use the information you provide for the purposes of the school admissions processes. We will pass the information you give on this form to schools inside or outside of Darlington or to other local education authorities as part of the admissions procedure. We will pass the information to the school the child is offered a place at, where it will form part of the pupil database that the school keeps. We will deal with any personal information you provide in line with the Data Protection Act 1998.

Section 3 – School Preferences - Please name up to three secondary schools in order of preference:

Priority	School Preferences	Reason for preference (if any)
1		
2		
3		

Section 4 - Sibling Information - Please give details below of any older siblings that will be attending any of the above schools in September 2026.

Name of Sibling	Date of birth	Name of school currently attending

Section 5 - Please complete Section 5 if you are applying for a place at a catholic school (reference should be made to the appropriate oversubscription criteria). Please note all evidence required pertaining to Carmel College, as set out below, must be sent directly to Hayley Wooding, Carmel College, The Headlands, Darlington, DL3 8RW.

Religious Status of child (please indicate by placing a tick in the appropriate box – please note that a tick should be indicated in only a single box)

Religion	Tick Box	Evidence [insert details in accordance with the Notes below]
1. Catholic		
2. Catechumen		
3. Member of an Eastern Christian Church (includes Orthodox Churches)		
4. Member of other Christian denomination		
5. Member of other faith		

Catholic Parish in which your child lives:

1. Catholic – baptism or reception into the Church will be required.
2. Catechumen – certificate of reception into the order of catechumens.
3. Eastern Christian Church – certificate of baptism or reception from the authorities of that Church.
4. Other Christian denominations – baptism certificate or where child is not practised, a letter confirming their church membership from their minister or faith leader.
5. Children of other faith – letter of support to confirm their faith membership from their minister or faith leader.

SECTION 6 – Declaration and signature of parent/carer

I am the parent or have parental responsibility for the child named. I confirm that I have read the Darlington Borough Council’s Guide for Parents and the relevant oversubscription criteria for the schools I am applying for and all the information given is accurate. I am aware that any place offered on false information may be withdrawn.

Parent Date

Please return this form to the Schools Admissions Team, Education Division, Town Hall, Darlington, DL1 5QT no later than 31 October 2025. If you need help completing this form, ring 01325 406333

School Name	Age Range	Type	Type	Capacity	Determined Admission Number For 2026/2027	Total No. of Preferences received by the closing date for 2025 intake	No of Multiple Appeals Submitted for 2025 intake	No. of Successful Multiple Appeals for 2025 intake
Carmel College The Headlands, Darlington Tel 01325 254525 Principal – Mrs Melanie Kane	11-18	A	Co-Ed	900	180	540	16	2
Haughton Academy Trust Salters Lane South, Darlington Tel 01325 254000 Principal – Mrs Su Gill	11-16	A	Co-Ed	900	180	258	0	N/A
Hummersknott Academy Trust Edinburgh Drive, Darlington Tel 01325 241191 Head of School – Mr Nick Merifield	11-16	A	Co-Ed	1200	240	454	1	1
Hurworth School, Croft Road, Hurworth, Darlington Tel 01325 720424 Head of School – Mrs Rachel Somerville	11-16	A	Co-Ed	635	127	197	-	N/A
Longfield Academy Longfield Road, Darlington Tel 01325 380815 Head of School - Mrs Angela Sweeten	11-16	A	Co-Ed	900	180	176	-	N/A
Polam Hall School Grange Road, Darlington Tel 01325 463383 Headteacher: Mrs Kate Reid	4-16	A	Co-Ed	420	84	310	5	0
St Aidan's Church of England Academy Hundens Lane, Darlington Tel 01325 373770 Principal – Mr Dean Lythgoe	11-16	A	Co-Ed	700	120	176	-	N/A
Wyvern Academy Eggleston View, Darlington Tel 01325 351377 Head of School – Mr Peter Seed	11-16	A	Co-Ed	700	140	155	-	N/A

These tables have been provided to assist you when considering your choice of school. They show the number of preference applications received by the closing date; the admission number for each school, along with the number of successful multiple appeals (appeals heard at the same period in time).

A = Academy

Pattern of secondary school admissions since September 2022

	The Number of Applicants admitted under the Admissions Criterion for oversubscribed schools												
	SEN	Criteria	1	2	3	4	5	6	7	8	9	10	11
Carmel College	9	2025	0	98	44	5	2	33	6	29	-	-	-
	3	2024	2	124	38	2	7	19	0	24	-	-	-
	7	2023	1	124	44	4	3	1	4	6	-	-	-
Haughton Academy	2	2025	N/A										
	4	2024	10	45	143 = 3.098m*		0						
		2023	5	57	144 = 1.96m*		0						
Hummersknott Academy	7	2025	3	0	72	0	37	136 = 3.452m*					
	6	2024	4	0	75	2	43	125 = 1.891m*					
	5	2023	4	0	86	3	36	121 = 1.891m*					
Hurworth School		2025	N/A										
		2024	N/A										
	4	2023	4	0	53	0	13	39	32 = 4.3m*				
Longfield Academy	N/A												
Polam Hall School	4	2025	2	21	0	38	2	7					
	3	2024	3	15	1	44	1	4					
		2023	N/A										
St Aidan's Academy	N/A												
Wyvern Academy	N/A												

*This indicates the measurement of the last child admitted under the distance criteria/or as a tie-breaker on the offer date of 1 March each year.

Note: Although the information contained in this Guide was correct as of 12 September 2025 it should not be assumed that there will be no change affecting the relevant arrangements or matters detailed in the Guide for admission to secondary schools/academies for 2026/2027, before the start of, or during, 2025/2026 academic year or in relation to subsequent academic years. You should visit Darlington Local Authority website: www.darlington.gov.uk/schooladmissions or contact: School Admissions Team, Education Division, Town Hall, Darlington, DL1 5QT. Tel: 01325 406333 where any subsequent changes that have had to be made to be compliant with the School Admissions Code 2021 and relevant statutory regulations, will be highlighted.